

# CLINICAL USE GUIDE

ASSISI  
LOOP®

Over 40 treatment protocols for almost 300 canine and feline diagnoses and clinical applications.



## TABLE OF CONTENTS

About this Guide .....	2	Lameness/Pain – Non-Joint Related .....	50
Achilles/Calcaneal Tendon Injury or Rupture – with or without Surgery .....	9	Lick Granuloma .....	51
Anal Gland Abscess/Perianal Fistulas .....	10	Lumbosacral Pain or Injury – Acute .....	52
Brain Lesion .....	11	Lumbosacral Pain or Injury – Chronic .....	54
Carpus/Wrist Pain or Injury – Acute .....	13	Neck Pain or Injury – Lower Cervical – Acute .....	56
Carpus/Wrist Pain or Injury – Chronic .....	14	Neck Pain or Injury – Lower Cervical – Chronic .....	58
Chiari-Like Malformation (CM or CLM) – Occipital Hypoplasia (OH) – Caudal Occipital Malformation Syndrome (COMS) .....	16	Neck Pain or Injury – Upper Cervical – Acute .....	60
Cognitive Dysfunction .....	18	Neck Pain or Injury – Upper Cervical – Chronic .....	62
Cystitis .....	20	Post Cruciate Surgery .....	64
Dilated Cardiomyopathy .....	22	Post-Operative Surgery Incisions .....	65
Ear Infection/Inflammation .....	24	Pulmonary Fibrosis .....	67
Elbow Pain or Injury – Acute .....	26	Sacroiliac (SI) Pain or Injury – Acute .....	69
Elbow Pain or Injury – Chronic .....	28	Sacroiliac (SI) Pain or Injury – Chronic .....	71
Eye Infection/Inflammation .....	30	Severe Pain Related to Arthritis .....	73
Fractures – Acute or Non-Healing .....	31	Shoulder Pain – Acute .....	74
Gastrointestinal and Organ Issues – Caudal/Lower Abdomen .....	32	Shoulder Pain – Chronic .....	76
Gastrointestinal and Organ Issues – Cranial/Upper Abdomen .....	34	Teeth, Jaw, Nose .....	78
Hip Pain or Injury – Acute .....	36	Thoracolumbar Disease, Pain or Injury – Acute .....	80
Hip Pain or Injury – Chronic .....	38	Thoracolumbar Disease, Pain or Injury – Chronic .....	82
Hock/Tarsal Pain or Injury – Acute .....	40	Tracheal Bronchitis .....	84
Hock/Tarsal Pain or Injury – Chronic .....	41	White Shaker Dog Syndrome .....	86
Kidney Disease – Acute and Chronic .....	43	Wounds.....	88
Knee Pain or Injury – Acute .....	45	Clinical Trails.....	89
Knee Pain or Injury – Chronic .....	47		
Lameness/Pain – Joint .....	49		

## ABOUT THIS GUIDE

We are proud to have earned your confidence in our company and your adoption of the Assisi Loop<sup>®</sup> as part of your therapeutic regimen for pain and inflammation for your clients' pets. The Loop is a non-invasive Non-Pharmaceutical Anti-Inflammatory Device (NPAID<sup>®</sup>) that accelerates your patients' healing and is compatible with other interventions employed in multi-agent and multimodal treatment strategies. Depending on the condition being treated, the Loop can be applied in-clinic and/or prescribed for your client's use at home.

This clinical use guide is designed to answer questions you may have regarding the technology, the therapeutic benefits, and the therapeutic applications of the Assisi Loop and our companion products. You will find 40 step-by-step, illustrated protocols for applying the Loop to almost 300 different inflammatory conditions affecting different parts of your patient's anatomy.

The guide is available exclusively to veterinary professionals.

## TECHNOLOGY

### What is tPEMF<sup>™</sup> Therapy?

The Loop's targeted Pulsed Electromagnetic Field Therapy (tPEMF<sup>™</sup>) delivers a micro-current to damaged tissue that is one-one-hundredth the strength of a cell phone signal. Our patented signal, applied for a 15-minute treatment cycle, is precisely configured to trigger the body's own natural anti-inflammatory process. The Loop stimulates cellular repair by delivering that signal to damaged tissue in a way that upregulates the body's own production of endogenous nitric oxide (NO). The result is accelerated healing and relief of inflammation and its symptoms of pain and swelling. The Assisi Loop provides a safe, effective, non-invasive, nonpharmaceutical therapy using the same patented therapeutic waveform that has been awarded 510(k) clearance by the FDA for human use.

Pulsed Electromagnetic Fields have been employed in therapeutic devices since the early 1900s. Bone growth stimulators (BGS), available as FDA cleared devices since the 1970's, use a specifically targeted pulsed electromagnetic field (PEMF) designed to increase bone healing in non-healing fractures. Several other non-thermal Radio Frequency (RF) diathermy devices, including the Assisi Loop, have been cleared by the FDA as being safe and effective for a specific indication. The Loop's FDA clearance was for the relief of post-operative pain and edema.

The Assisi Loop's patented signal targeting the upregulation of nitric oxide was developed by the late Dr. Arthur Pilla of Columbia University, one of the inventors of the BGS signal, which was cleared by the FDA for treating non-healing fractures. The Assisi Loop received its FDA clearance for its PEMF signal that reduces pain and edema in 2008. As described further below, the science that underpins these two related technologies is what spurred the Assisi Loop's design and treatment regimen.

## What are the benefits of the Assisi Loop?

- Reduces pain
- Increases mobility
- Improves circulation
- Accelerates healing
- Reduces swelling
- Compatible with other treatments for pain and inflammation
- Opioid sparing
- No known side effects
- Portable, for use at or away from home

As a veterinary professional, you may recommend the Loop exclusively or as part of a multimodal therapy approach. The Loop is a portable, easy-to-use device that allows pet owners to bring the healing home.

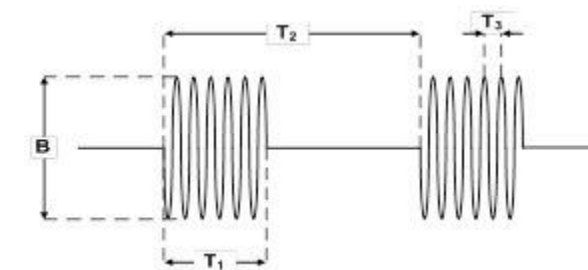
## How does the Assisi Loop work?

The Loop's mechanism of action (MOA) is to upregulate the production of endogenous Nitric Oxide (NO), the body's own anti-inflammatory molecule, to help speed healing of soft and hard tissues—skin, muscles, tendons, ligaments, bones, and internal organs. The physicians who discovered NO's physiological properties were awarded the Nobel Prize in Medicine in 1998. [See "The Nobel Prize in Physiology or Medicine 1998". Nobelprize.org. Nobel Media AB 2014. Web. 21 Oct 2016. <[http://www.nobelprize.org/nobel\\_prizes/medicine/laureates/1998](http://www.nobelprize.org/nobel_prizes/medicine/laureates/1998).]

One of those discoverers, Dr. Louis J. Ignarro, was a Founding Board Member of the Assisi-related company that originated the Loop's core technology. Assisi's Scientific Advisor, Dr. Sean Hagberg, was a co-founder and Chief Scientific Officer of that company, which developed and obtained FDA clearance for the technology employed in the Assisi Loop. Dr. Hagberg is an authority on the biological pathways that govern the uptake of endogenous NO and on the myriad findings contained in the 150,000 citations comprising the NO body of literature.

The Assisi RF tPEMF signal was configured specifically to target normal endogenous anti-inflammatory and repair responses. This makes the Assisi tPEMF<sup>™</sup> signal more effective than any other marketed PEMF or RF device of which we are aware.

### Assisi RF tPEMF Signal

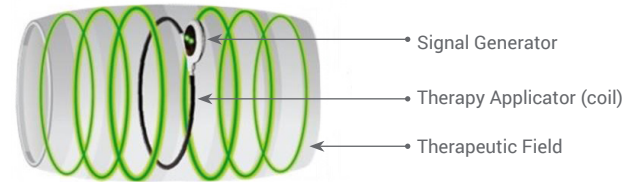


This RF signal specifically targets mechanisms that lead to accelerating the non-inflammatory nitric oxide (NO) cascade, which regulates inflammation and healing. The Assisi RF PEMF signal uses the body's natural inflammation and healing processes. There are no known side effects.

The Assisi Loop generates a twice-per-second, 2-millisecond burst of a 27.12 Megahertz radio wave signal with an amplitude of 4 microtesla. For comparison, a 3T Magnetic Resonance Imaging (MRI) device operates at a very much stronger 3 Tesla. The Loop's signal strength is about 100 times less than that from a cell phone. This pulse-modulated field is non-thermal and non-invasive, yet is precisely configured to have therapeutic benefit.

The 20 cm Assisi Loop coil generates a barrel-shaped therapeutic field that extends 10 inches on both sides from the plane of the coil. The 10 cm Assisi Loop coil extends 5 inches. This allows deep penetration of the healing effects as well as allowing it to treat a large area of tissue in a relatively short 15-minute treatment cycle.

Treatment depth is about 2/3 the diameter of the applicator, extending out on either side.



**Note: If using in-clinic Loop treatments or laser therapy in conjunction with at-home use of the Assisi Loop, we recommend 2 hours between uses of the two modalities for maximum benefit. If using the Assisi Loop less frequently than recommended in the relevant protocol, observable results may take longer than expected.**

## Will the patient feel anything during treatment?

Only in rare cases will the patient exhibit palpable effects during a Loop treatment. The Assisi Loop can markedly increase blood flow and tissue oxygenation, which restores the health of damaged tissue and reduces pain associated with lack of sufficient oxygen. We often hear reports from pet owners that their animal relaxes as soon as they start their treatments with the Loop. With the many healing benefits that the Loop offers, this is not surprising.

Some patients will experience the effects of increased blood flow because with increased circulation there is often a warming or tingling sensation. The impact is subtle, however, and many animals will not seem to notice at all. There have been a few reports of twitching as a physical reaction to the tPEMF™ therapy. This effect is very rare and is most likely to occur with animals that have had some type of long-term degenerative or chronic condition. This condition may have resulted in extreme ischemia—a decrease in the blood supply to a bodily organ, tissue, or part caused by constriction or obstruction of the blood vessels. If the treatment area has experienced this, then the increased blood flow may cause a reaction in the body such as feeling of warmth, tingling and, in extreme cases, twitching.

We generally recommend in such cases that you reduce the treatment duration to 5 minutes rather than 15. We suggest that you continue treatments at the reduced duration until the twitching is gone and the affected area has responded to the increased perfusion of blood and then resume 15-minute treatments.

## How soon will I see results?

For acute inflammation, your patient should experience noticeable relief after the first or second treatment. With chronic or degenerative conditions, you and the pet owner may not see notable results for 2 to 4 weeks. Also, with some patients it may take longer due to individual circumstances. You'll want to continue the treatments as recommended by the relevant protocol for continued long-term healing.

When using the Assisi Loop for orthopedic and neurodegenerative disorders it may take up to 14 days of 2-4 times daily treatments to see clinical results. Refer to the relevant treatment protocol for loading dose recommendations.

## THE TECHNOLOGY IN PRACTICE

### The Treatment Field

The effective treatment field fills the area within the coil of the Loop, and extends on both sides of the therapy applicator (coil). For a 10 cm (4 inch) Loop, the treatment field extends 12.7 cm (5 inches) from both sides. For a 20 cm (7.5 inch) Loop, the treatment field extends from 25.4 cm (10 inches) from both sides, in both directions.

### Placement of the Loop

The Loop's therapy applicator can be either placed around or adjacent to the treatment area. There is no difference in treatment quality so long as the area being treated is within the treatment field. The applicator does not need to be touching your patient directly, as the treatment field extends out from the Loop's applicator in both directions. The Loop's battery pack does not affect the treatment field therefore it can be placed in any position. As long as the treatment area is within the field, your animal is receiving treatment. Each of the protocols comprising this clinical use guide shows specific placement of the applicator depending on the disorder and the part of the animal being treated.

You or your client can safely hold the Loop to the patient's treatment area for the duration of the treatment period. If you or the owner does not wish to do so, the Loop can be affixed to the animal by vet wrap or bandaging.

Avoid using the Assisi Loop near large metal objects (metal dog crates, stainless steel exam and treatment tables, etc.) as doing so may reduce the beneficial effects of its use.

### Important Information

- Do not use in presence of anesthetic, oxygen, or nitrous oxide enriched air.
- Use away from metal cages, crates, or tables to avoid reduced signal effectiveness.
- DO NOT USE on any patient or by an individual with a pacemaker or any other implanted electronic device.
- Do not use in patients with a hemangiosarcoma.
- Do not leave pets unattended during treatment.

### Applicator Etiquette

Bending or elongating the applicator too much will hinder effectiveness, possibly break the connections, and void the warranty. Keeping the applicator as circular as possible provides the best field of treatment.



# Targeting what matters most. **Healthier, happier pets.**

From pain and inflammation to separation anxiety and other behavior disorders, our **Assisi LOOP®** and **Calmer Canine®** loops use time-tested **targeted pulsed electromagnetic field (tPEMF™)** therapy to accelerate healing and improve well-being.



## Assisi Signal Indicator Card

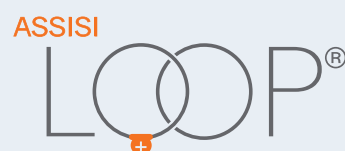
Some long-term Loop users, like to be able to confirm the integrity of the signal from time-to-time. For this reason, we offer the Assisi Signal Indicator Card—in the size of a standard credit card—that blinks to confirm the signal of a Loop when placed, as instructed, within the perimeter of the Loop.



To order the Assisi Signal Indicator Card, go to our product page: <https://assisianimalhealth.com/store/#accessories>

For warranty information, [visit assisianimalhealth.com](https://assisianimalhealth.com)

## Managing Pain and Inflammation



### Assisi Loop® 2.0 Device

The flagship product of the Assisi line of tPEMF therapy devices, Assisi LOOP® provides safe, effective management of pain and inflammation in-clinic, at home, or on the go.

### Assisi Loop Lounge®

The Assisi Loop Lounge® creates a comfortable space for healing that can be used at home or on the go. With a treatment field that extends up from the pad, pets get nose-to-tail, ears-to-toes treatment. Available sizes: S, M, L.

### Assisi DentaLOOP®

Assisi DentaLOOP® device is specially designed for use on dental and oral surgery patients. It helps reduce oral and dental pain and inflammation, improves affected tissues, and helps speed recovery time.

## FAQS AND OTHER USEFUL INFORMATION

To learn more about the Loop, please visit our website.

1. FAQs for Veterinary Professionals: <https://assisianimalhealth.com/faq/#vet-faq>
2. Clinical Research Overview: <https://assisianimalhealth.com/research/>
3. Webinars about the Assisi Loop: <https://zomedica.com/zomedica-university/>

## Behavior and Anxiety Products



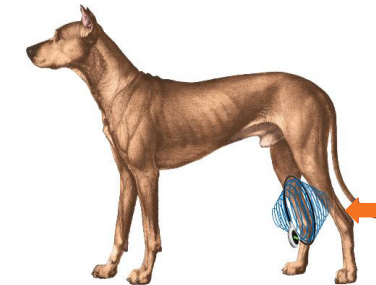
### Calmer Canine® Device

A drug-free solution to canine separation anxiety. The unique tPEMF™ signal is specifically tuned to target the anxiety center in a dog's brain to help restore a calm emotional state.

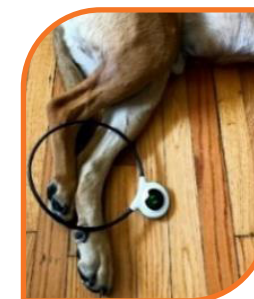


## PROTOCOLS

### ACHILLES/CALCANEAL TENDON INJURY OR RUPTURE – WITH OR WITHOUT SURGERY



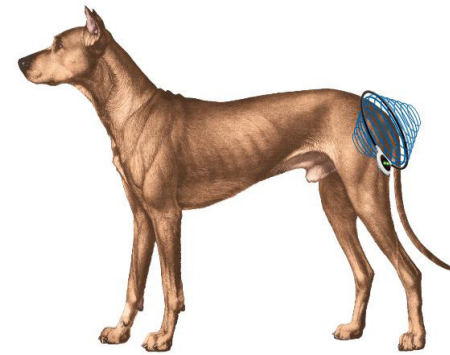
1. A small (10 cm) or large (20 cm) Assisi Loop can be used to treat the Achilles/calcaneal tendon area of the pet. Positioning is extremely important for optimum effect.
2. Position the pet lying down either flat on the ground or up on their elbows with their rear limbs out to one side.
3. The Achilles/calcaneal tendon is identified by finding the **calcaneal bone**, the equivalent of the human heel, and moving slightly up the leg (**arrow**). **See Diagram**.
4. Place the Assisi Loop directly over the injured area with the center of the Loop centered over the area. **See Picture and Diagram**.
5. The signal generator can be positioned to help balance and stabilize the unit during treatment.
6. The signal generator should be located in view of the person treating the pet.
7. Do not leave the pet unattended when using this placement as small movements can change the positioning of the Loop and the area being treated.
8. Turn the unit on by depressing the button on the front of the white rubberized signal generator; green lights will illuminate about once per second. If the light is blinking 2-3 times per second, the battery is running low and a new Assisi Loop should be purchased.
9. Keep the unit in place for the full 15 minutes until the unit shuts off.
10. Use the unit 4 times daily, if possible, for 5 days and then twice daily for an additional 5-15 days to speed healing and improve strength of the tendon as it heals.
11. The Assisi Loop can be used once or twice daily if any discomfort or inflammation return, at any point, to this location.
12. There should be a minimum of 2 hours between treatments for optimum battery efficiency.



**Pet Owner Responsibility.** A panel of licensed, experienced veterinarians has developed this Guide. Pet owners should use this protocol only to treat a condition listed above and as directed by a qualified veterinary clinician. Other protocols in this Guide should be used only as directed by a qualified veterinary clinician.

**Important:** Before starting treatment, please consult product label for optimal product use and safety guidelines. To learn more about the technology, visit our website.

## ANAL GLAND ABSCESS/PERIANAL FISTULAS



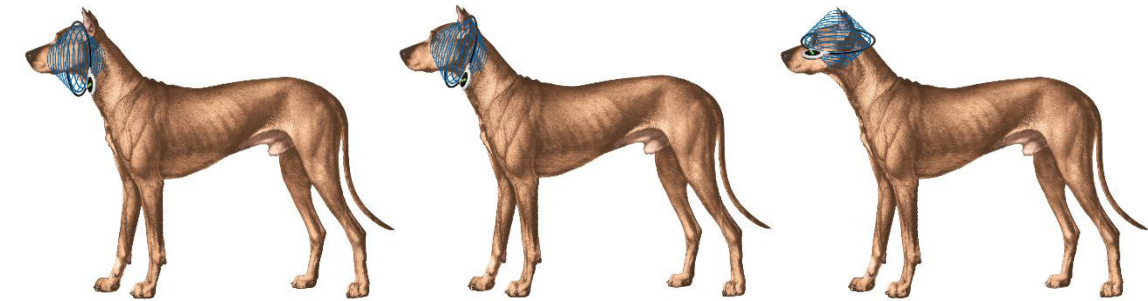
1. A small (10 cm) or large (20 cm) Assisi Loop can be used to treat anal gland abscess and perianal fistulas. Positioning is extremely important for optimum effect.
2. Position the pet lying down either flat on the ground or up on their elbows.
3. The Assisi Loop can be placed over the tail to allow the tail to hold the Assisi Loop in place or the Assisi Loop can be held in place. **See Pictures and Diagram**
4. The signal generator should be located in view of the person treating the pet.
5. Do not leave the pet unattended when using this placement as small movements can change the positioning of the Loop and the area being treated.
6. Turn the unit on by depressing the button on the front of the white rubberized signal generator; green lights will illuminate about once per second. If the light is blinking 2-3 times per second, the battery is running low and a new Assisi Loop should be purchased.
7. Keep the unit in place for the full 15 minutes until the unit shuts off.
8. Use the unit 4 times daily, if possible, until clinical signs have resolved. Treat twice daily for an additional 3-5 days.
9. There should be a minimum of 2 hours between treatments for optimum battery efficiency.



**Pet Owner Responsibility.** A panel of licensed, experienced veterinarians has developed this Guide. Pet owners should use this protocol only to treat a condition listed above and as directed by a qualified veterinary clinician. Other protocols in this Guide should be used only as directed by a qualified veterinary clinician.

**Important:** Before starting treatment, please consult product label for optimal product use and safety guidelines. To learn more about the technology, visit our website.

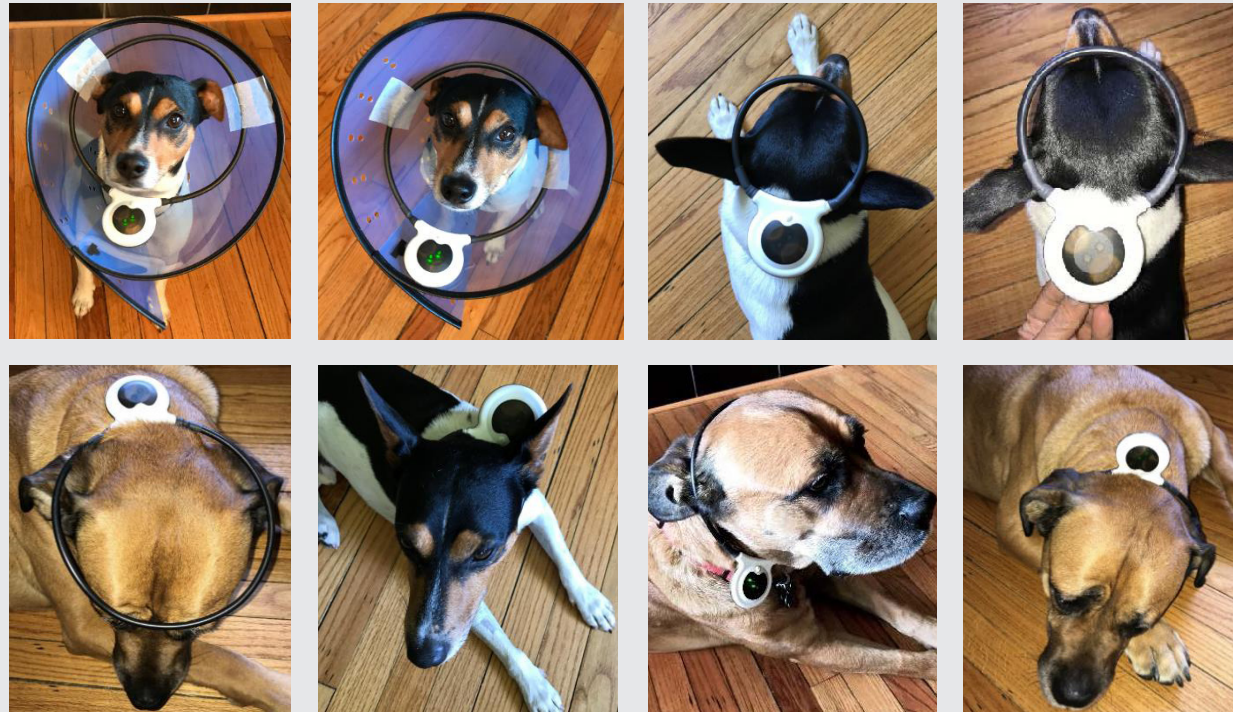
## BRAIN LESION



### Stroke, granulomatous meningoencephalitis (GME).

1. A small (10 cm) or large (20 cm) Assisi Loop can be used to treat the brain depending on the size of the pet. Dachshund-and Chihuahua-sized pets do best with a small Assisi Loop for this particular condition. Large-breed dogs need the larger Loop. Positioning is extremely important for optimum effect.
2. Position the pet lying down either flat on the ground or up on their elbows.
3. The Assisi Loop can be placed on the head directly in front of the ears, attached to an Elizabethan collar, or placed like a halo on top of the head. **See Pictures and Diagrams**
4. When placing the Assisi Loop as a halo, the Loop may need to be held in place to prevent slipping.
5. When attaching the Assisi Loop to the Elizabethan collar, position the Loop so the center head is in the center of the Loop, being careful not to bend the Loop. Tape the Loop in several places to keep it secure and in place for the whole treatment.
6. Placing the Assisi Loop over the head:
  - a. Place the Assisi Loop over the head of the pet. Place the top of the Loop at the front or back of the pet's ear, this will allow proper treatment as well as help hold the Loop in place. **See Pictures and Diagrams**
  - b. If the pet is head shy, cover their eyes while placing the Loop over their head.
7. The signal generator should be located in view of the person treating the pet.
8. Do not leave the pet unattended when using this placement as small movements can change the positioning of the Loop and the area being treated.
9. Turn the unit on by depressing the button on the front of the white rubberized signal generator; green lights will illuminate about once per second. If the light is blinking 2-3 times per second, the battery is running low and a new Assisi Loop should be purchased.
10. Keep the unit in place for the full 15 minutes until the unit shuts off.
11. Use the unit 4 times daily, if possible, for 3-5 days or for as long as clinical signs persist. Treat twice daily for an additional 5 days.
12. There should be a minimum of 2 hours between treatments for optimum battery efficiency.

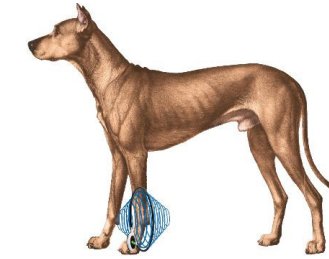
## BRAIN LESION - CONTINUED



**Pet Owner Responsibility.** A panel of licensed, experienced veterinarians has developed this Guide. Pet owners should use this protocol only to treat a condition listed above and as directed by a qualified veterinary clinician. Other protocols in this Guide should be used only as directed by a qualified veterinary clinician.

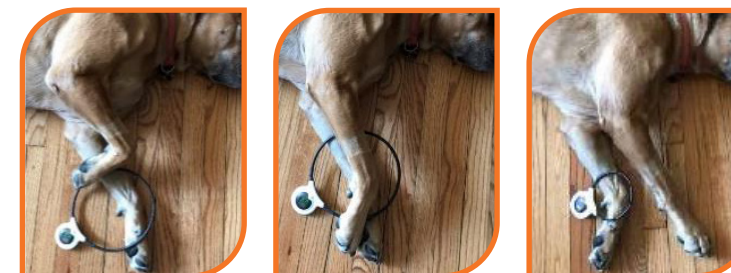
**Important:** Before starting treatment, please consult product label for optimal product use and safety guidelines. To learn more about the technology, visit our website.

## CARPUS/WRIST PAIN OR INJURY ACUTE



Acute hyperextension injury, acute inflammation with chronic hyperextension or arthritis, autoimmune mediated polyarthropathy with carpal effusion, carpal strain, flexor carpi ulnaris strain, effusion at the carpus secondary to tick borne disease, post carpal arthrodesis.

1. A small (10 cm) Assisi Loop can be used to treat the carpal joint/wrist in small to medium dogs. A large- or giant-breed dog should use a large (20 cm) Assisi Loop. If both carpal joints/wrists are to be treated at the same time, then a large Loop should be utilized. Positioning is extremely important for optimum effect. **See Pictures and Diagram**
2. Position the pet lying down either flat on the ground or up on their elbows.
3. Identify the carpal joint(s)/wrist(s) and place one or both joints in the treatment area, laying the Assisi Loop over the area. **See Pictures and Diagram**
4. The signal generator can be positioned to help balance and stabilize the unit during treatment.
5. The signal generator should be located in view of the person treating the pet.
6. Do not leave the pet unattended when using this placement as small movements can change the positioning of the Loop and the area being treated.
7. Turn the unit on by depressing the button on the front of the white rubberized signal generator; green lights will illuminate about once per second. If the light is blinking 2-3 times per second, the battery is running low and a new Assisi Loop should be purchased.
8. Keep the unit in place for the full 15 minutes until the unit shuts off.
9. Use the unit 4 times daily, if possible, for 3-5 days. Treat twice daily for an additional 5 days or until pain is completely resolved. Then use as needed.
10. There should be a minimum of 2 hours between treatments for optimum battery efficiency.

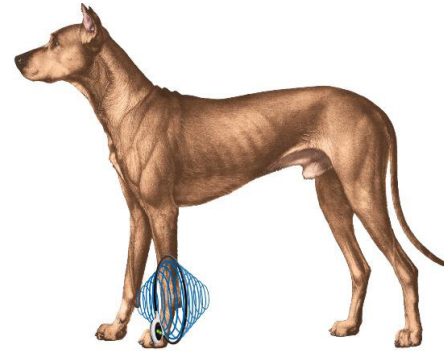


**Pet Owner Responsibility.** A panel of licensed, experienced veterinarians has developed this Guide. Pet owners should use this protocol only to treat a condition listed above and as directed by a qualified veterinary clinician. Other protocols in this Guide should be used only as directed by a qualified veterinary clinician.

**Important:** Before starting treatment, please consult product label for optimal product use and safety guidelines. To learn more about the technology, visit our website.



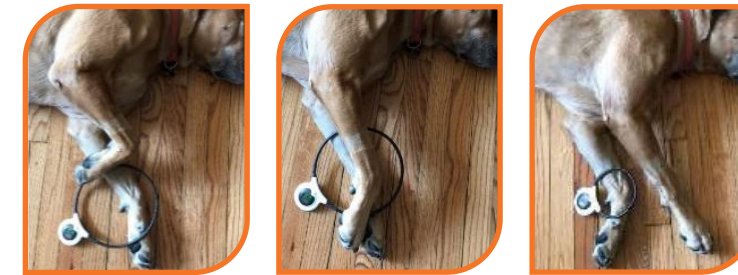
CARPUS/WRIST PAIN OR INJURY CHRONIC



**Chronic hyperextension injury with associated pain, osteoarthritis, effusion secondary to tickborne or autoimmune disease.**

1. A small (10 cm) Assisi Loop can be used to treat the carpal joint/wrist in small to medium dogs. A large- or giant-breed dog should use a large Loop. If both carpal joints/wrists are to be treated at the same time, then a large (20 cm) Loop should be utilized. Positioning is extremely important for optimum effect. **See Pictures and Diagram**
2. Position the pet lying down either flat on the ground or up on their elbows.
3. Identify the carpal joint(s)/wrist(s) and place one or both joints in the treatment area, laying the Assisi Loop over the area or placing the carpal joint/wrist through the Assisi Loop. **See Pictures and Diagram**
4. The signal generator can be positioned to help balance and stabilize the unit during treatment.
5. The signal generator should be located in view of the person treating the pet.
6. Do not leave the pet unattended when using this placement as small movements can change the positioning of the Loop and the area being treated.
7. Turn the unit on by depressing the button on the front of the white rubberized signal generator; green lights will illuminate about once per second. If the light is blinking 2-3 times per second, the battery is running low and a new Assisi Loop should be purchased.
8. Keep the unit in place for the full 15 minutes until the unit shuts off.
9. Use the Assisi Loop 4 times daily, if possible, for 10 days or until there is improved mobility and pain is greatly decreased or eliminated. Use of the Loop can be tapered down to 1-2 times daily as the condition improves. Long-term chronic conditions may require as much as 3-6 weeks before tapering would be appropriate. If symptoms resolve and regular use of the Assisi Loop ceases, use the Assisi Loop as needed if pain starts to recur. If there is an acute injury at a carpal joint/wrist that has chronic disease, follow the steps in "Carpus/Wrist Pain or Injury – Acute" until all pain is resolved.
10. There should be a minimum of 2 hours between treatments for optimum battery efficiency.
11. It is common to utilize the Assisi Loop after long walks or unusual activity when chronic carpal issues exist.

12. **For those treating osteoarthritis in multiple parts of the body:** If you are treating OA in multiple parts of the body, you will need to treat EACH AREA at least twice per day. We recommend:
  - Using more than one Loop so you can treat multiple areas in the same 15 minutes
  - Use the same Loop for multiple areas, being sure to wait 2 hours between treatments
  - Use the Loop Lounge for full-body treatment and the Loop to spot treat a more affected area if needed. Do not use the Loop Lounge and Loop simultaneously as the signals can cross.



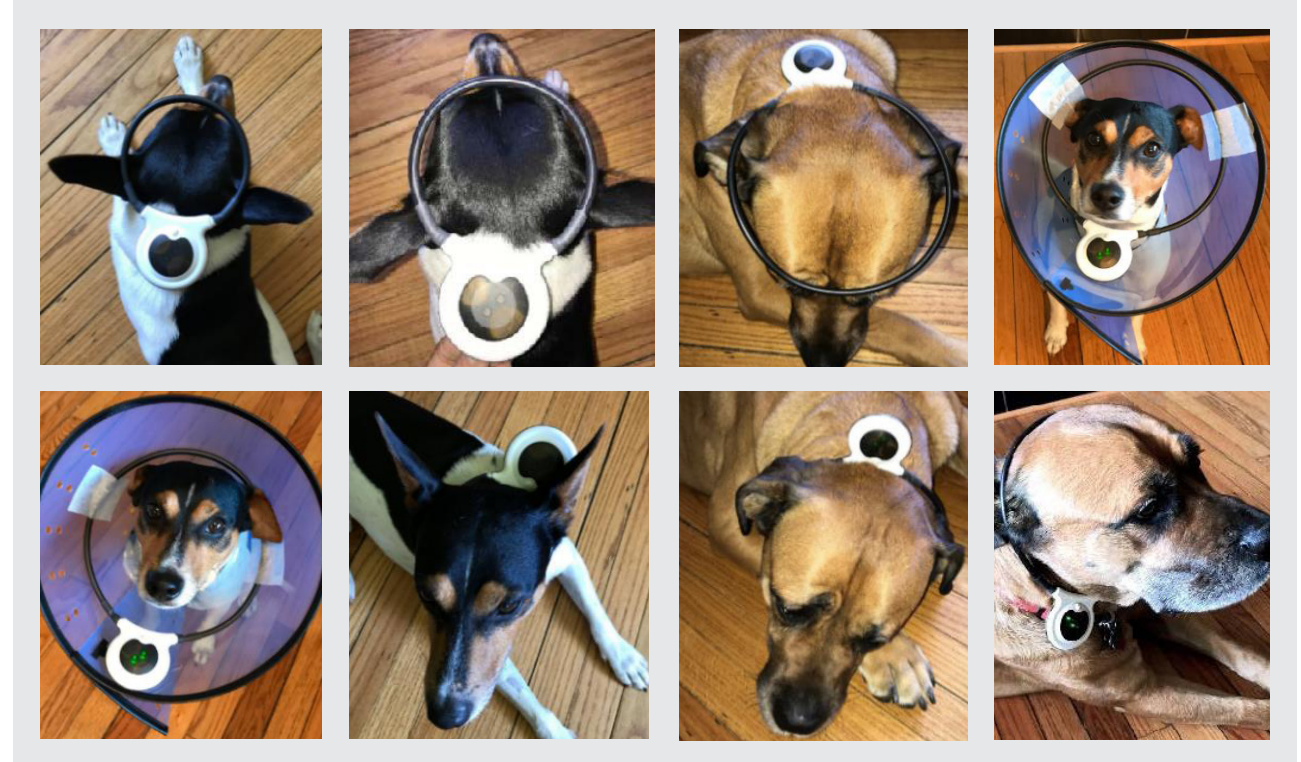
**Pet Owner Responsibility.** A panel of licensed, experienced veterinarians has developed this Guide. Pet owners should use this protocol only to treat a condition listed above and as directed by a qualified veterinary clinician. Other protocols in this Guide should be used only as directed by a qualified veterinary clinician.

**Important:** Before starting treatment, please consult product label for optimal product use and safety guidelines. To learn more about the technology, visit our website.

## CHIARI-LIKE MALFORMATION (CM OR CLM) – OCCIPITAL HYPOPLASIA (OH) – CAUDAL OCCIPITAL MALFORMATION SYNDROME (COMS)



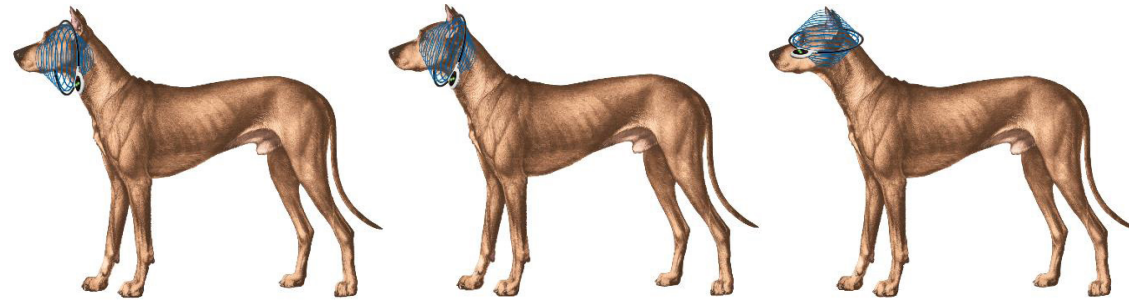
1. A small (10 cm) or large (20 cm) Assisi Loop can be used to treat the brain in the pet depending on the size of the pet. Dachshund- and Chihuahua-sized pets do best with a small Assisi Loop for this particular condition. Larger breeds need the larger Loop. Positioning is extremely important for optimum effect.
2. Position the pet lying down either flat on the ground, up on their elbows, or sitting.
3. The Assisi Loop can be placed on the head directly in front of the ears, behind the ears, attached to an Elizabethan collar, or placed like a halo on top of the head. **See Pictures and Diagrams**
4. Placing the Assisi Loop over the head:
  - a. Place the Assisi Loop over the head of the pet. Place the top of the Loop at the front or back of the pet's ear; this will allow proper treatment as well as help hold the Loop in place. **See Pictures and Diagrams**
  - b. If the pet is head shy, cover their eyes while placing the Loop over their head.
5. When placing the Assisi Loop as a halo, the Loop may need to be held in place to prevent slipping.
6. When attaching the Assisi Loop to the Elizabethan collar, position the Loop so the center head is in the center of the Loop, being careful not to bend the Loop. Tape the Loop in several places to keep it secure and in place for the whole treatment.
7. The signal generator should be located in view of the person treating the pet.
8. Do not leave the pet unattended when using this placement as small movements can change the positioning of the Loop and the area being treated.
9. Turn the unit on by depressing the button on the front of the white rubberized signal generator; green lights will illuminate about once per second. If the light is blinking 2-3 times per second, the battery is running low and a new Assisi Loop should be purchased.
10. Keep the unit in place for the full 15 minutes until the unit shuts off.
11. Use the unit 4 times daily, if possible, for 3-5 days. Treat twice daily for an additional 5 days or until signs are completely resolved.
12. There should be a minimum of 2 hours between treatments for optimum battery efficiency.



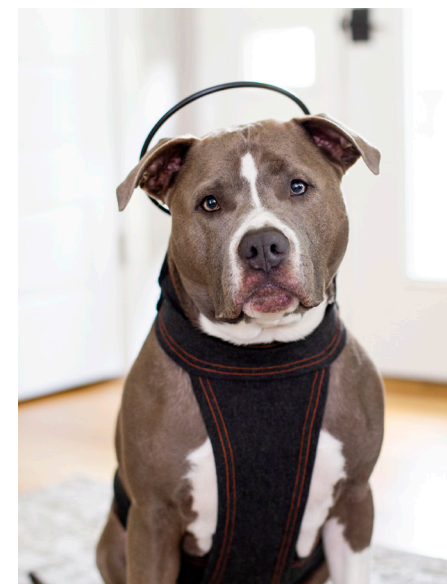
**Pet Owner Responsibility.** A panel of licensed, experienced veterinarians has developed this Guide. Pet owners should use this protocol only to treat a condition listed above and as directed by a qualified veterinary clinician. Other protocols in this Guide should be used only as directed by a qualified veterinary clinician.

**Important:** Before starting treatment, please consult product label for optimal product use and safety guidelines. To learn more about the technology, visit our website.

## COGNITIVE DYSFUNCTION



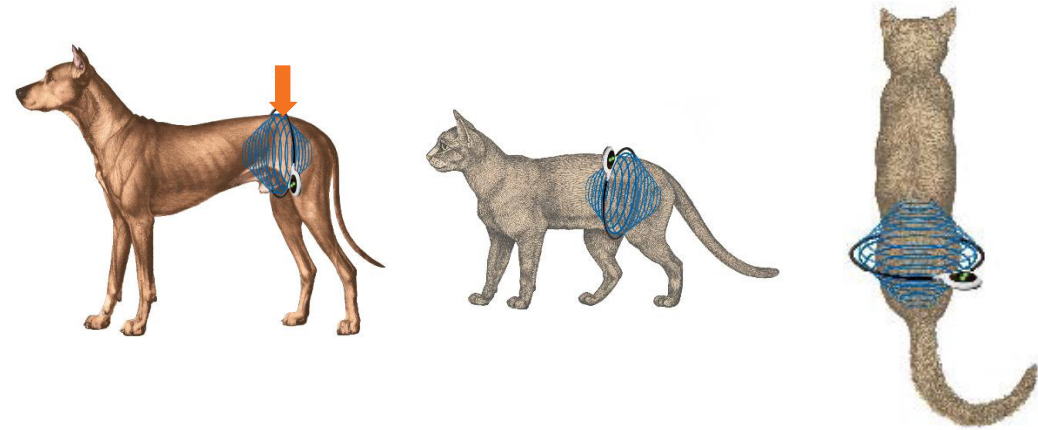
1. A small (10 cm) or large (20 cm) Assisi Loop or Calmer Canine device can be used to treat the brain in the pet depending on the size of the pet. Dachshund- and Chihuahua-sized pets do best with a small loop. Larger breed dogs need the larger loop. Positioning is extremely important for optimum effect
2. Position the pet lying down either flat on the ground, up on their elbows, or sitting.
3. The Calmer Canine device can be placed using the Calmer Canine vest. If using the Assisi Loop, it can be placed on the head directly in front of the ears, behind the ears, attached to an Elizabethan collar, or placed like a halo on top of the head. **See Pictures and Diagrams**
4. Placing the Assisi Loop over the head:
  - a. Place the Assisi Loop over the head of the pet. Place the top of the Loop at the front or back of the pet's ear; this will allow proper treatment as well as help hold the Loop in place. **See Pictures and Diagrams**
  - b. If the pet is head shy, cover their eyes while placing the Loop over their head.
5. When placing the Assisi Loop as a halo, the Loop may need to be held in place to prevent slipping.
6. When attaching the Assisi Loop to the Elizabethan collar, position the Loop so the center head is in the center of the Loop, being careful not to bend the Loop. Tape the Loop in several places to keep it secure and in place for the whole treatment.
7. The signal generator should be located in view of the person treating the pet.
8. Do not leave the pet unattended when using this placement as small movements can change the positioning of the Loop and the area being treated.
9. Turn the unit on by depressing the button on the front of the white rubberized signal generator; green lights will illuminate about once per second. If the light is blinking 2-3 times per second, the battery is running low and a new Assisi Loop should be purchased.
10. Keep the unit in place for the full 15 minutes until the unit shuts off.
11. Use the unit 4 times daily, if possible, for 3-5 days. Treat twice daily for an additional 5 days or until signs are completely resolved.
12. There should be a minimum of 2 hours between treatments for optimum battery efficiency.



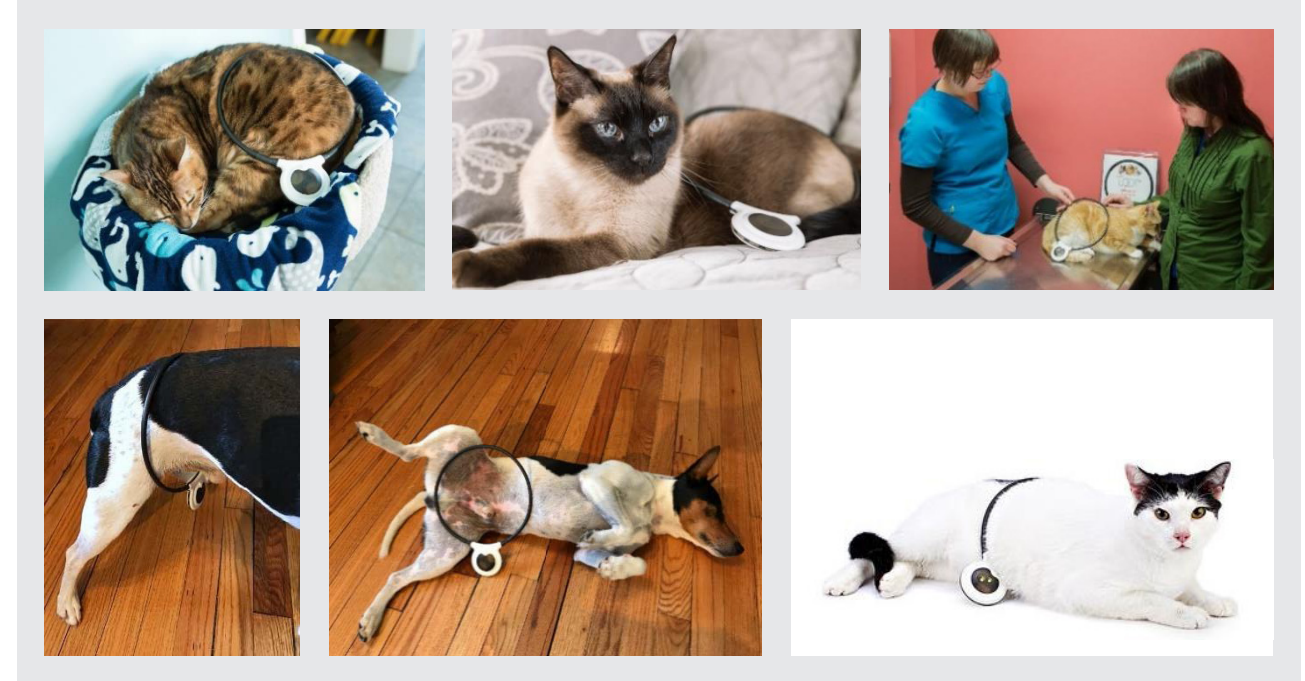
**Pet Owner Responsibility.** A panel of licensed, experienced veterinarians has developed this Guide. Pet owners should use this protocol only to treat a condition listed above and as directed by a qualified veterinary clinician. Other protocols in this Guide should be used only as directed by a qualified veterinary clinician.

**Important:** Before starting treatment, please consult product label for optimal product use and safety guidelines. To learn more about the technology, visit our website.

## CYSTITIS



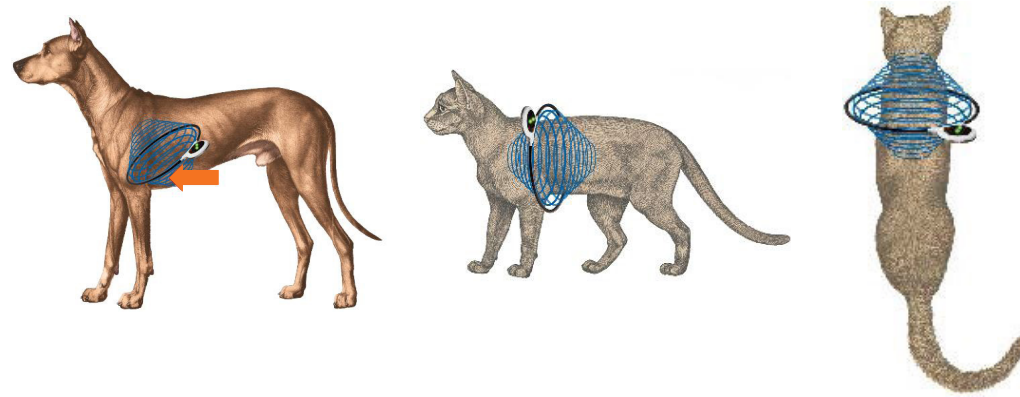
1. A large (20 cm) Assisi Loop should be used to treat the bladder of the pet.
2. Position the pet lying down either flat on the ground or up on their elbows. Place the Assisi Loop over the back part of their abdomen. **See Pictures and Diagrams**
3. The Loop can also be placed around the patient if the size of the patient and the size of the Assisi Loop are appropriate for this positioning to be utilized. To place the Loop around the abdomen of the pet, it is usually easier to place the Assisi Loop around the rear feet and slide it up over the hips, making sure the tail goes through the Loop as it is being slid up the rear limbs. The Assisi Loop is slid to a position just in front of the pelvis. **See Pictures and Diagrams (the arrow indicates the front of the pelvis)**
4. **CAUTION: Do not force the pet's shoulders, haunches, or torso through the coil. If they do not slip easily through the coil, place the coil flat against, over, or under animal's torso, as shown in the related images. Forcing the animal through the coil can be traumatic to the pet and may overly stress the connection of the coil to the circuit board inside the Loop case.**
5. The signal generator should be located in view of the person treating the pet.
6. Do not leave the pet unattended when using this placement as small movements can change the positioning of the Loop and the area being treated.
7. Turn the unit on by depressing the button on the front of the white rubberized signal generator; green lights will illuminate about once per second. If the light is blinking 2-3 times per second, the battery is running low and a new Assisi Loop should be purchased.
8. Keep the unit in place for the full 15 minutes until the unit shuts off.
9. Use the unit 4 times daily, if possible, until clinical signs have resolved. Then treat twice daily until a urinalysis has been repeated and the cystitis has been resolved.
10. There should be a minimum of 2 hours between treatments for optimum battery efficiency.



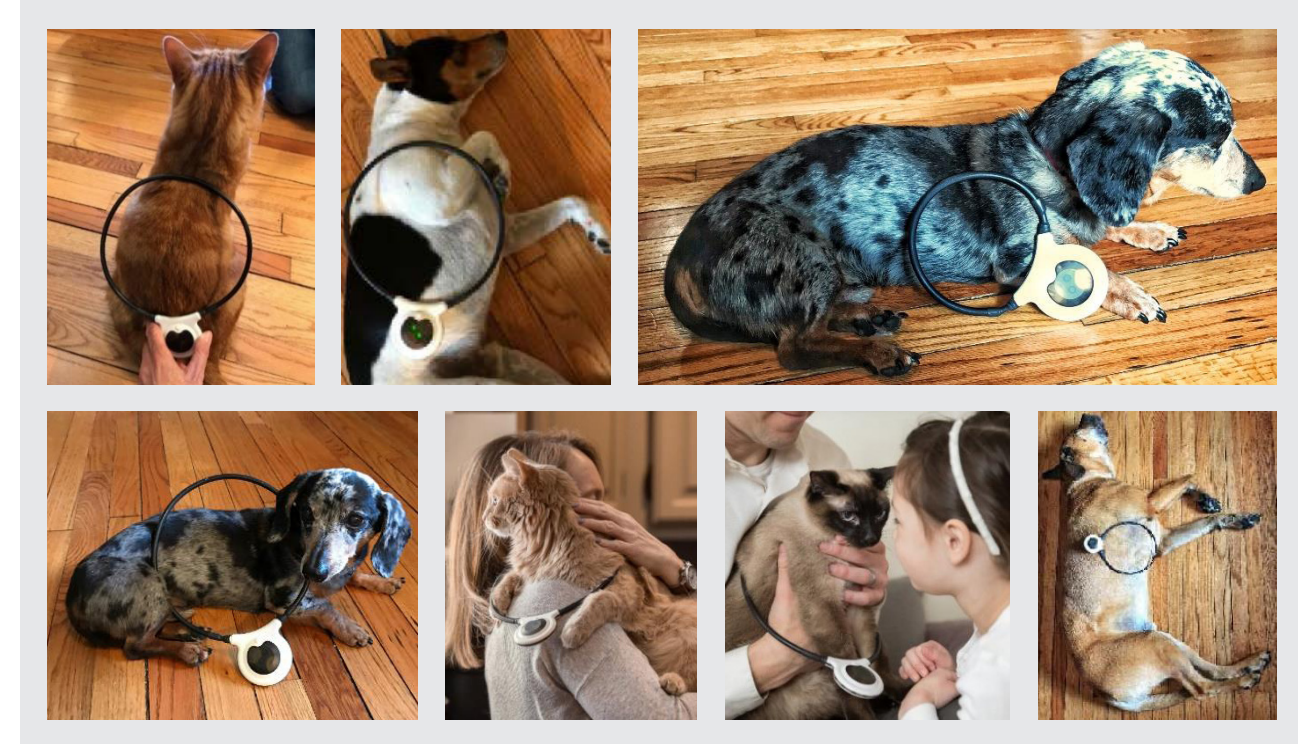
**Pet Owner Responsibility.** A panel of licensed, experienced veterinarians has developed this Guide. Pet owners should use this protocol only to treat a condition listed above and as directed by a qualified veterinary clinician. Other protocols in this Guide should be used only as directed by a qualified veterinary clinician.

**Important:** Before starting treatment, please consult product label for optimal product use and safety guidelines. To learn more about the technology, visit our website.

## DILATED CARDIOMYOPATHY



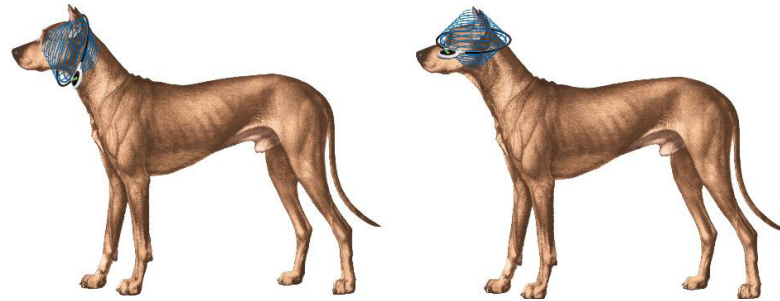
1. A large (20 cm) Assisi Loop should be used to treat the chest of the pet.
2. Position the pet lying down either flat on the ground, up on their elbows, sitting, or being held.
3. If the pet is small enough, the Assisi Loop can be placed around the chest of the pet.
4. Placing the Assisi Loop over the head:
  - a. Place the Assisi Loop over the head of the pet with the signal generator toward the ground. Place the top of the Loop at the **deepest part of the chest**; this will allow proper treatment as well as help hold the Loop in place. **See Pictures and Diagrams**
  - b. If the pet is head shy, cover their eyes while placing the Loop over their head.
5. Medium- to large-sized pet – The Assisi Loop can be placed on the side of the chest over the area that is to be treated. **See Pictures and Diagram**
6. Giant- or wide-breed dogs (Rottweilers, Mastiffs, Newfoundlands, . . .) – Two Assisi Loops can be used simultaneously to treat both sides when dog's chest exceeds 10" wide. One Assisi Loop can be used on the two sides consecutively, but there should be 2 hours in between sessions for optimum battery efficiency.
7. The signal generator should be located in view of the person treating the pet.
8. Do not leave the pet unattended when using this placement as small movements can change the positioning of the Loop and the area being treated.
9. Turn the unit on by depressing the button on the front of the white rubberized signal generator; green lights will illuminate about once per second. If the light is blinking 2-3 times per second, the battery is running low and a new Assisi Loop should be purchased.
10. Keep the unit in place for the full 15 minutes until the unit shuts off.
11. Treat 4 times daily, if possible, until clinical signs have resolved. Then treat twice daily.
12. There should be a minimum of 2 hours between treatments for optimum battery efficiency.



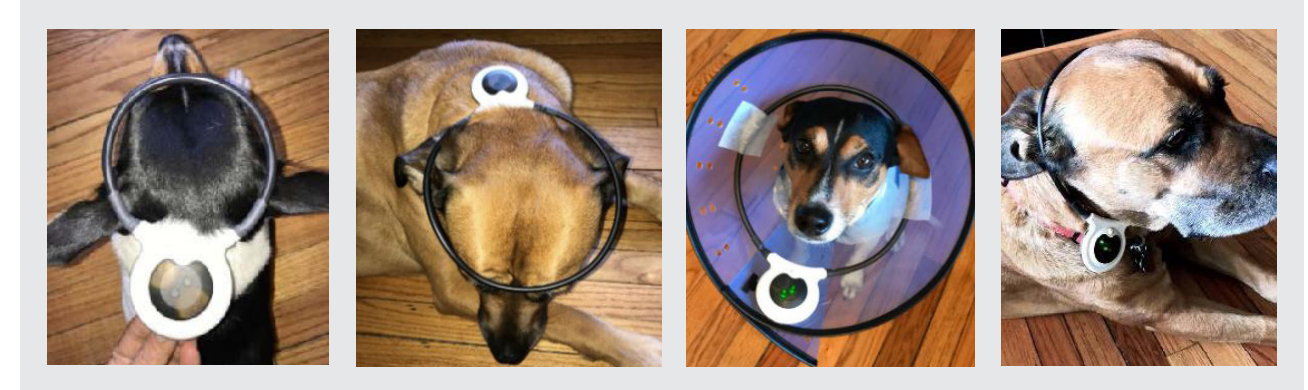
**Pet Owner Responsibility.** A panel of licensed, experienced veterinarians has developed this Guide. Pet owners should use this protocol only to treat a condition listed above and as directed by a qualified veterinary clinician. Other protocols in this Guide should be used only as directed by a qualified veterinary clinician.

**Important:** Before starting treatment, please consult product label for optimal product use and safety guidelines. To learn more about the technology, visit our website.

## EAR INFECTION/INFLAMMATION



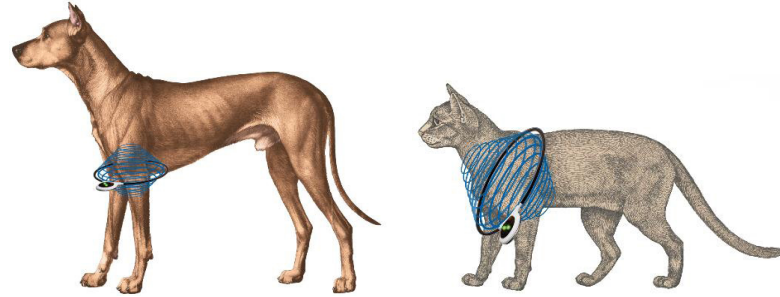
1. A small (10 cm) or large (20 cm) Assisi Loop can be used to treat the ears in the pet depending on the size of the pet. Dachshund- and Chihuahua-sized pets do best with a small Assisi Loop. Larger breeds need the larger Loop. Positioning is extremely important for optimum effect.
2. Position the pet lying down either flat on the ground, up on their elbows, or sitting.
3. The Assisi Loop can be placed on the head directly in front of the ears, attached to an Elizabethan collar, or placed like a halo on top of the head. **See Pictures and Diagrams**
4. Placing the Assisi Loop over the head:
  - a. Place the Assisi Loop over the head of the pet. Place the top of the Loop in front of or just on the pet's ear; this will allow proper treatment as well as help hold the Loop in place. **See Pictures and Diagrams**
  - b. If the pet is head shy, cover their eyes while placing the Loop over their head.
  - c. If the ears are tender, be careful not to cause discomfort when placing the Loop.
5. When placing the Assisi Loop as a halo, the Loop may need to be held in place to prevent slipping.
6. When attaching the Assisi Loop to the Elizabethan collar, position the Loop so the center head is in the center of the Loop, being careful not to bend the Loop. Tape the Loop in several places to keep it secure and in place for the whole treatment.
7. The signal generator should be located in view of the person treating the pet.
8. Do not leave the pet unattended when using this placement as small movements can change the positioning of the Loop and the area being treated.
9. Turn the unit on by depressing the button on the front of the white rubberized signal generator; green lights will illuminate about once per second. If the light is blinking 2-3 times per second, the battery is running low and a new Assisi Loop should be purchased.
10. Keep the unit in place for the full 15 minutes until the unit shuts off.
11. Use the unit 4 times daily, if possible, for 3-5 days or until pain and inflammation is gone.
12. There should be a minimum of 2 hours between treatments for optimum battery efficiency.



**Pet Owner Responsibility.** A panel of licensed, experienced veterinarians has developed this Guide. Pet owners should use this protocol only to treat a condition listed above and as directed by a qualified veterinary clinician. Other protocols in this Guide should be used only as directed by a qualified veterinary clinician.

**Important:** Before starting treatment, please consult product label for optimal product use and safety guidelines. To learn more about the technology, visit our website.

## ELBOW PAIN OR INJURY ACUTE



**Post-surgery, fragmented coronoid process (FCP), ununited anconeal process (UAP), acute on chronic osteoarthritis, osteochondrosis (OC), osteochondrosis dissecans (OCD), elbow dysplasia, pain associated with radius curvus, jump down syndrome (traumatic FCP), ununited medial epicondyle (UME), effusion secondary to tick borne or autoimmune disease, acute injury, (sports injury, i.e., tumble out of chute, run into fence), post athletic activity, sore after running, medial compartment syndrome.**

1. A small (10 cm) or large (20 cm) Assisi Loop can be used to treat the elbow area of the pet depending on the positioning of the Loop and size of the pet. The small Assisi Loop can be used for up to Border-Collie-sized pets when treating the pet from inside or outside of the elbow. Larger pets need the larger Assisi Loop for this positioning. Large dogs can use a small Assisi Loop if the limb is placed through the Loop and the Loop is placed around the center of the elbow. Positioning is extremely important for optimum effect. **See Pictures and Diagrams**
2. Both elbows can be treated if the pet is small enough to have the Loop go around the elbows or around the elbows and the body. **See Pictures.** The pet may need to be held during treatment with this placement to maintain proper Loop positioning. Pet can also be placed in lateral recumbency for treatment for both elbows simultaneously. Just ensure both elbows are inside the coil of the Loop. It is important to maintain the circular shape of the Loop and not allow it to elongate.
3. **CAUTION: Do not force the Assisi Loop over the pet's head or body. If it does not slip easily over the head or body, place the Loop on the side of the elbow. Forcing the animal's head and body through the coil can be traumatic to the pet and may overly stress the connection of the coil to the circuit board inside the Loop case.**
4. If the pet is not being held for treatment, position them lying down, preferably flat on the ground or up on their elbows (if treating only one elbow).
5. Place the Assisi Loop on the outside of the elbow with the center of the Loop over the elbow. **See Pictures and Diagram**
6. Please supervise your pet when using the Assisi Loop and remove the Loop immediately after

the therapy session has ended.

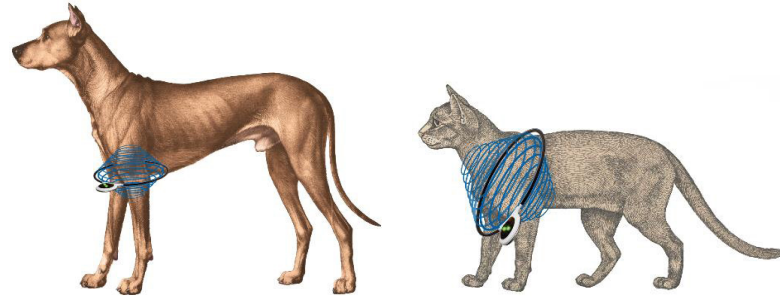
7. The signal generator can be positioned to help balance and stabilize the unit during treatment.
8. The signal generator should be located in view of the person treating the pet.
9. Do not leave the pet unattended when using this placement as small movements can change the positioning of the Loop and the area being treated.
10. Turn the unit on by depressing the button on the front of the white rubberized signal generator; green lights will illuminate about once per second. If the light is blinking 2-3 times per second, the battery is running low and a new Assisi Loop should be purchased.
11. Keep the unit in place for the full 15 minutes until the unit shuts off.
12. Use the Assisi Loop 4 times daily, if possible, for 5 days. Treat twice daily for an additional 5 days or until pain is completely resolved.
13. There should be a minimum of 2 hours between treatments for optimum battery efficiency.
14. **For those treating osteoarthritis in multiple parts of the body:** If you are treating OA in multiple parts of the body, you will need to treat EACH AREA at least twice per day. We recommend:
  - Using more than one Loop so you can treat multiple areas in the same 15 minutes
  - Use the same Loop for multiple areas, being sure to wait 2 hours between treatments
  - Use the Loop Lounge for full-body treatment and the Loop to spot treat a more affected area if needed. Do not use the Loop Lounge and Loop simultaneously as the signals can cross.



**Pet Owner Responsibility.** A panel of licensed, experienced veterinarians has developed this Guide. Pet owners should use this protocol only to treat a condition listed above and as directed by a qualified veterinary clinician. Other protocols in this Guide should be used only as directed by a qualified veterinary clinician.

**Important:** Before starting treatment, please consult product label for optimal product use and safety guidelines. To learn more about the technology, visit our website.

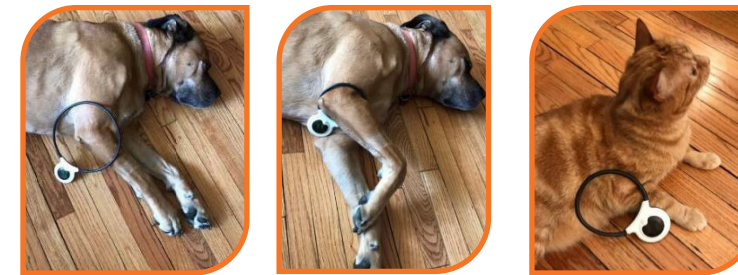
## ELBOW PAIN OR INJURY CHRONIC



**Fragmented coronoid process (FCP), ununited anconeal process (UAP), osteochondrosis (OC), osteochondrosis dissecans (OCD), elbow dysplasia, pain associated with radius curvus, jump down syndrome (traumatic FCP), ununited medial epicondyle (UME), osteoarthritis, effusion secondary to tick borne or autoimmune disease, medial compartment syndrome.**

1. A small (10 cm) or large (20 cm) Assisi Loop can be used to treat the elbow area of the pet depending on the positioning of the Loop. The small Assisi Loop can be used for up to Border-Collie-sized pets when treating the pet from outside of the elbow. Larger pets need the larger Loop for this positioning. Large dogs can use a small Loop if the limb is placed through the Loop and the Loop is placed at the center of the elbow. Positioning is extremely important for optimum effect. **See Pictures and Diagrams**
2. Both elbows can be treated if the pet is small enough to have the Loop go around the elbows or around the elbows and the body. **See Pictures.** The pet may need to be held during treatment with this placement to maintain proper Loop positioning. Pet can also be placed in lateral recumbency for treatment for both elbows simultaneously. Just ensure both elbows are inside the coil of the Loop. It is important to maintain the circular shape of the Loop and not allow it to elongate.
3. **CAUTION: Do not force the Assisi Loop over the pet's head or body. If it does not slip easily over the head or body, place the Loop on the side of the elbow. Forcing the animal's head and body through the coil can be traumatic to the pet and may overly stress the connection of the coil to the circuit board inside the Loop case.**
4. If the pet is not being held for treatment, position them lying down, preferably flat on the ground or up on their elbows (if treating only one elbow). The Assisi Loop can be placed on the outside of the elbow with the center of the Loop over the elbow. **See Pictures and Diagram**
5. Please supervise your pet when using the Assisi Loop and remove the Loop immediately after the therapy session has ended.
6. The signal generator can be positioned to help balance and stabilize the unit during treatment.
7. The signal generator should be located in view of the person treating the pet.

8. Do not leave the pet unattended when using this placement as small movements can change the positioning of the Loop and the area being treated.
9. Turn the unit on by depressing the button on the front of the white rubberized signal generator; green lights will illuminate about once per second. If the light is blinking 2-3 times per second, the battery is running low and a new Assisi Loop should be purchased.
10. Keep the unit in place for the full 15 minutes until the unit shuts off.
11. Use the Assisi Loop 4 times daily, if possible, for 10 days or until there is improved mobility and pain is greatly decreased or eliminated. Use of the Loop can be tapered down to 1-2 times daily as the condition improves. Long-term chronic conditions may require as much as 3-6 weeks before tapering would be appropriate. If symptoms resolve and regular use of the Assisi Loop ceases, use the Assisi Loop as needed if pain starts to recur. If there is an acute injury at an elbow that has chronic disease, follow the steps in "Elbow Pain or Injury – Acute" until all pain is resolved.
12. There should be a minimum of 2 hours between treatments for optimum battery efficiency.
13. It is common to utilize the Assisi Loop after long walks or unusual activity when chronic elbow issues exist.
14. **For those treating osteoarthritis in multiple parts of the body:** If you are treating OA in multiple parts of the body, you will need to treat EACH AREA at least twice per day. We recommend:
  - Using more than one Loop so you can treat multiple areas in the same 15 minutes
  - Use the same Loop for multiple areas, being sure to wait 2 hours between treatments
  - Use the Loop Lounge for full-body treatment and the Loop to spot treat a more affected area if needed. Do not use the Loop Lounge and Loop simultaneously as the signals can cross.

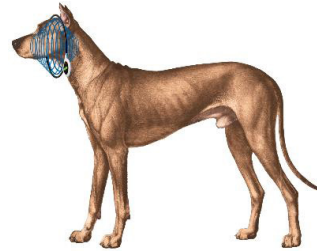


**Pet Owner Responsibility.** A panel of licensed, experienced veterinarians has developed this Guide. Pet owners should use this protocol only to treat a condition listed above and as directed by a qualified veterinary clinician. Other protocols in this Guide should be used only as directed by a qualified veterinary clinician.

**Important:** Before starting treatment, please consult product label for optimal product use and safety guidelines. To learn more about the technology, visit our website.

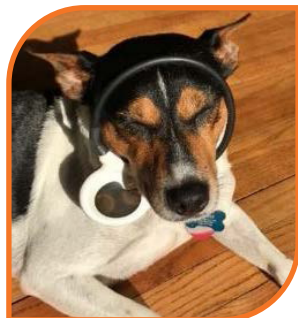


## EYE INFECTION/INFLAMMATION



**Blepharospasm, entropion, bacterial or viral eye infections (to treat associated inflammation and pain, not infection), conjunctivitis, uveitis, indolent ulcers, eye ulcers, corneal ulcers.**

1. A small (10 cm) or large (20 cm) Assisi Loop or Assisi DentaLoop can be used to treat the eyes in the pet depending on the size of the pet. Dachshund- and Chihuahua-sized pets do best with a small loop. Larger breeds need the larger Loop. Positioning is extremely important for optimum effect.
2. Position the pet lying down either flat on the ground, up on their elbows, or sitting.
3. Place the Assisi Loop over the head of the pet with the signal generator toward the ground. Place the top of the Loop just behind the pet's eyes or attached to an Elizabethan collar; this will allow proper treatment as well as help hold the Loop in place. **See Pictures and Diagram**
  - a. If the pet is head shy, cover their eyes while placing the Loop over their head.
4. When attaching the Assisi Loop to the Elizabethan collar, position the Loop so the eyes are in the center of the Loop, being careful not to bend the Loop. Tape the Loop in several places to keep it secure and in place for the whole treatment.
5. The signal generator should be located in view of the person treating the pet.
6. Do not leave the pet unattended when using this placement as small movements can change the positioning of the Loop and the area being treated.
7. Turn the unit on by depressing the button on the front of the white rubberized signal generator; green lights will illuminate about once per second. If the light is blinking 2-3 times per second, the battery is running low and a new Assisi Loop should be purchased.
8. Keep the unit in place for the full 15 minutes until the unit shuts off.
9. Use the unit 4 times daily, if possible, for 3-5 days or until pain and inflammation is gone.
10. There should be a minimum of 2 hours between treatments for optimum battery efficiency.

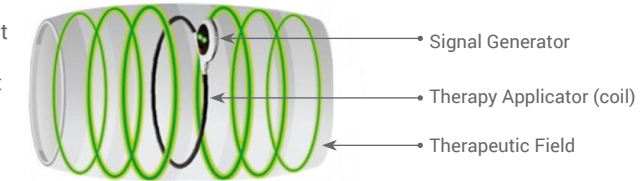


**Pet Owner Responsibility.** A panel of licensed, experienced veterinarians has developed this Guide. Pet owners should use this protocol only to treat a condition listed above and as directed by a qualified veterinary clinician. Other protocols in this Guide should be used only as directed by a qualified veterinary clinician.

**Important:** Before starting treatment, please consult product label for optimal product use and safety guidelines. To learn more about the technology, visit our website.

## FRACTURES – ACUTE OR NON-HEALING

Treatment depth is about 2/3 the diameter of the applicator, extending out on either side.

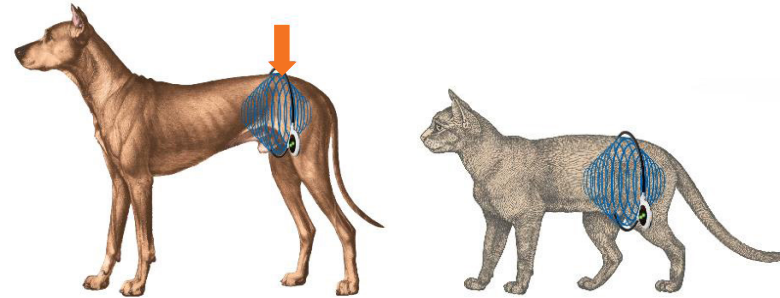


1. A small (10 cm) or large (20 cm) Assisi Loop can be used to speed healing of a bone fracture. Positioning is extremely important for optimum effect.
2. The small Assisi Loop can be used for up to Beagle-sized pets when treating a bone in a leg. It is easier to treat larger pets with the larger Assisi Loop for this positioning or if treating a fracture of a bone in the body or skull.
3. Position the pet lying down either flat on the ground if a forelimb, body, or skull bone is affected, or up on their elbows with their rear limbs out to one side if a rear limb bone is affected.
4. Identify the fracture site and place Assisi Loop with the center of the Loop over the fracture site.
5. The signal generator should be located in view of the person treating the pet.
6. Do not leave the pet unattended when using this placement as small movements can change the positioning of the Loop and the area being treated.
7. Turn the unit on by depressing the button on the front of the white rubberized signal generator; green lights will illuminate about once per second. If the light is blinking 2-3 times per second, the battery is running low and a new Assisi Loop should be purchased.
8. Keep the unit in place for the full 15 minutes until the unit shuts off.
9. Use the unit 4 times daily, if possible, for 5 days and then twice daily for an additional 5-15 days or until symptoms resolve to speed healing and improve strength of the bone as it heals. The Assisi Loop can be used once or twice daily if any discomfort or inflammation return, at any point, to this location.
10. There should be a minimum of 2 hours between treatments for optimum battery efficiency.

**Pet Owner Responsibility.** A panel of licensed, experienced veterinarians has developed this Guide. Pet owners should use this protocol only to treat a condition listed above and as directed by a qualified veterinary clinician. Other protocols in this Guide should be used only as directed by a qualified veterinary clinician.

**Important:** Before starting treatment, please consult product label for optimal product use and safety guidelines. To learn more about the technology, visit our website.

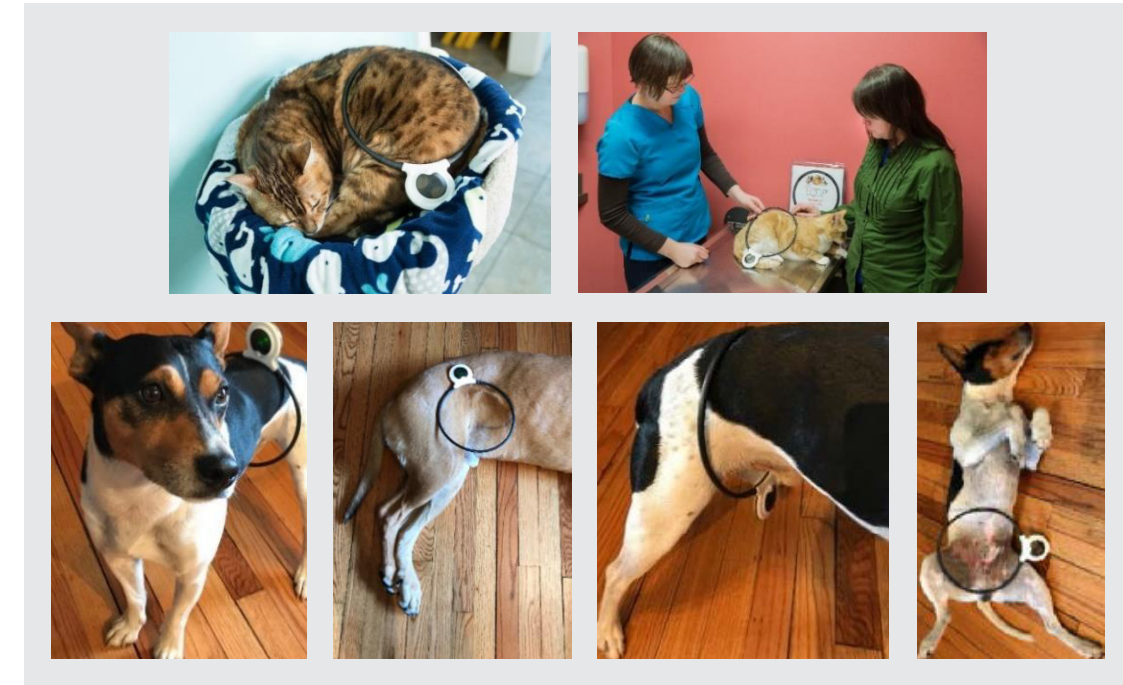
## GASTROINTESTINAL AND ORGAN ISSUES – CAUDAL/LOWER ABDOMEN



**Inflammatory bowel disease, colitis, chronic diarrhea, cystitis, urinary tract obstruction, fecal or urinary incontinence, hemorrhagic enteritis, uterine inflammation.**

1. A large (20 cm) Assisi Loop should be used to treat the abdomen of the pet.
2. The area to be treated will either be the cranial or front half of the abdomen or the caudal or back half of the abdomen. If the area to be treated is the stomach, pancreas, liver, spleen, or gall bladder, the cranial or front half of the abdomen is to be treated. If the area to be treated is the small intestine, large intestine, colon, or uterus, the caudal or back half of the abdomen is to be treated. In a cat or small dog, the whole abdomen can be treated with a large Assisi Loop.
3. Position the pet lying down either flat on the ground, up on their elbows, sitting, or standing. Place the Assisi Loop on the pet's back, side, or around the abdomen. Center the Loop **just in front of the pelvis**. See Pictures and Diagrams
4. If the pet is small enough, the Assisi Loop can be placed around the abdomen of the pet.
  - a. If the pet is small enough, place the pet's rear limbs through the Assisi Loop and slide the Loop over the rear limbs and tail onto the trunk. Place the Assisi Loop just in front of the pelvis. See Pictures and Diagrams
  - b. **CAUTION: Do not force the pet's shoulders, haunches, or torso through the coil. If they do not slip easily through the coil, place the coil flat against, over, or under animal's torso, as shown in the related images. Forcing the animal through the coil can be traumatic to the pet and may overly stress the connection of the coil to the circuit board inside the Loop case.**
5. Medium- to large-sized pets – If the pet is too large for the above placement, the Assisi Loop can be placed:
  - a. On the side of the abdomen over the area that is to be treated. See Pictures
  - b. With the pet on their back with the Assisi Loop on their abdomen. See Pictures
6. Giant- or wide-breed dogs (Rottweilers, Mastiffs, Newfoundlands, . . . ) – Two Assisi Loops can be used simultaneously to treat both sides if indicated and dog's abdomen exceeds 10" wide. One Assisi Loop can be used on the two sides consecutively, but there should be 2 hours in between sessions for optimum battery efficiency.

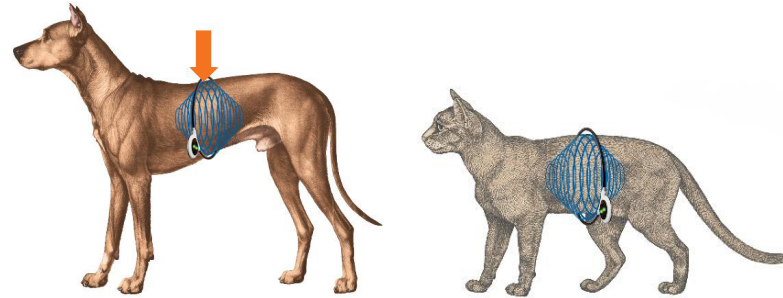
7. The signal generator should be located in view of the person treating the pet.
8. Do not leave the pet unattended when using this placement as small movements can change the positioning of the Loop and the area being treated.
9. Turn the unit on by depressing the button on the front of the white rubberized signal generator; green lights will illuminate about once per second. If the light is blinking 2-3 times per second, the battery is running low and a new Assisi Loop should be purchased.
10. Keep the unit in place for the full 15 minutes until the unit shuts off.
11. In cases of severe disease (hemorrhagic gastroenteritis, acute kidney failure, urinary obstruction, acute episode of IBD, . . . ), use the unit 4 times daily, if possible, until clinical signs have resolved. Then treat twice daily for an additional 3-5 days.
12. In mild or early cases, the Loop can be used 2 times daily for 48 hours or until clinical signs have resolved.
13. There should be a minimum of 2 hours between treatments for optimum battery efficiency.



**Pet Owner Responsibility.** A panel of licensed, experienced veterinarians has developed this Guide. Pet owners should use this protocol only to treat a condition listed above and as directed by a qualified veterinary clinician. Other protocols in this Guide should be used only as directed by a qualified veterinary clinician.

**Important:** Before starting treatment, please consult product label for optimal product use and safety guidelines. To learn more about the technology, visit our website.

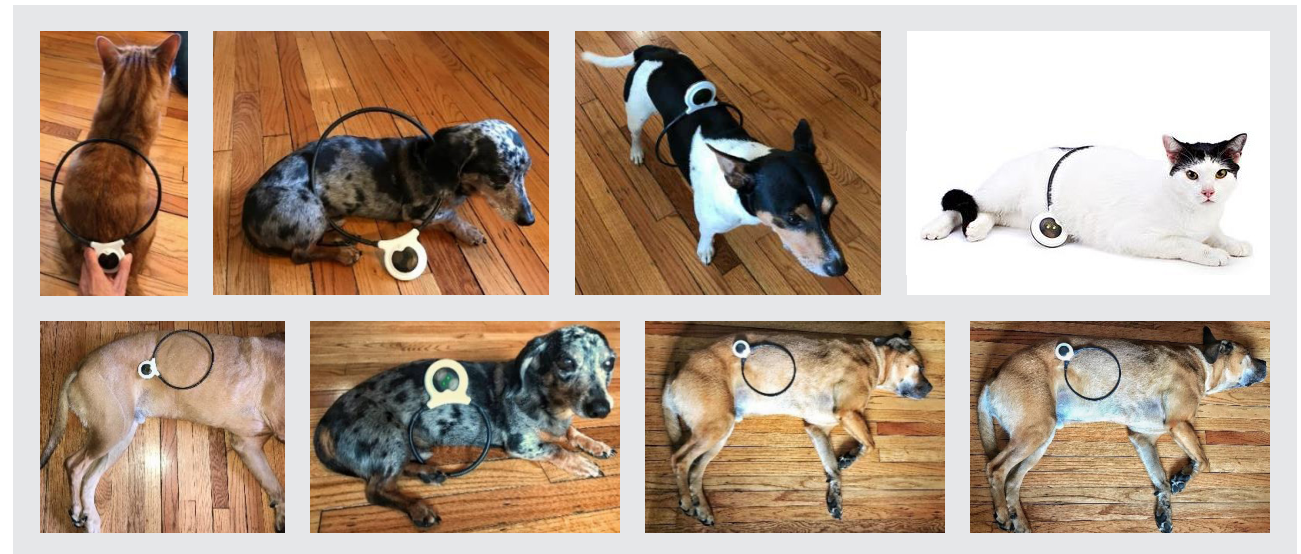
## GASTROINTESTINAL AND ORGAN ISSUES – CRANIAL/UPPER ABDOMEN



**Pancreatitis, inflammatory bowel disease, liver disease, cholecystitis, gall bladder sludge, colitis, chronic diarrhea, gastroenteritis, hemorrhagic enteritis.**

1. A large (20 cm) Assisi Loop should be used to treat the abdomen of the pet.
2. The area to be treated will either be the cranial or front half of the abdomen or the caudal or back half of the abdomen. If the area to be treated is the stomach, pancreas, liver, spleen, or gall bladder, the cranial or front half of the abdomen is to be treated. If the area to be treated is the small intestine, large intestine, colon, or uterus, the caudal or back half of the abdomen is to be treated. In a toy-size dog or a cat, the whole abdomen can be treated with a large Assisi Loop.
3. Position the pet lying down either flat on the ground, up on their elbows, or sitting. Place the Assisi Loop on the pet's back, side, or around the abdomen. Center the Loop **just behind the last rib**. See Pictures and Diagrams (the arrow indicates the position of the last rib)
4. The Loop can be placed around the patient if the size of the patient and the size of the Assisi Loop are appropriate for this positioning to be utilized. To place the Loop around the abdomen of the pet, it is usually easier to place the Assisi Loop around the rear feet and slide it up over the hips, making sure the tail goes through the Loop as it is being slid up the rear limbs. The Assisi Loop is slid to a position just behind the last rib. See Pictures and Diagrams (the arrow indicates the position of the last rib)
5. **CAUTION: Do not force the pet's shoulders, haunches, or torso through the coil. If they do not slip easily through the coil, place the coil flat against, over, or under animal's torso, as shown in the related images. Forcing the animal through the coil can be traumatic to the pet and may overly stress the connection of the coil to the circuit board inside the Loop case.**
6. Medium- to large-sized pets – If the pet is too large for the above placement, the Assisi Loop can be placed on the side of the abdomen over the area that is to be treated. See Pictures
7. Giant- or wide-breed dogs (Rottweilers, Mastiffs, Newfoundlands, . . . ) – Two Assisi Loops can be used simultaneously to treat both sides if indicated and dog's abdomen exceeds 10" wide. One Assisi Loop can be used on the two sides consecutively, but there should be 2 hours in between sessions for optimum battery efficiency.
8. The signal generator should be located in view of the person treating the pet.

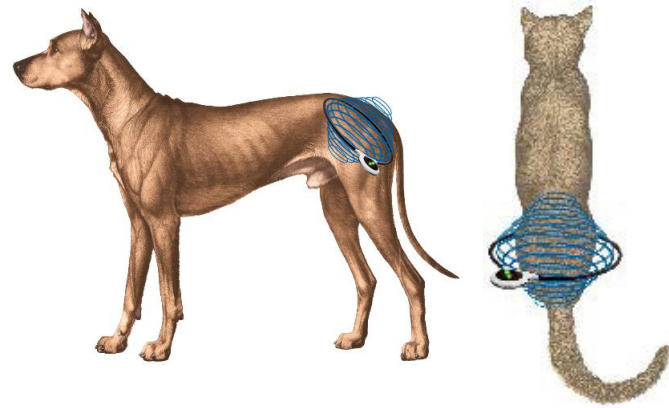
9. Do not leave the pet unattended when using this placement as small movements can change the positioning of the Loop and the area being treated.
10. Turn the unit on by depressing the button on the front of the white rubberized signal generator; green lights will illuminate about once per second. If the light is blinking 2-3 times per second, the battery is running low and a new Assisi Loop should be purchased.
11. Keep the unit in place for the full 15 minutes until the unit shuts off.
12. In cases of severe disease (hemorrhagic gastroenteritis, acute kidney failure, acute episode of IBD, . . . ), use the unit 3-4 times daily, if possible, or until clinical signs have resolved. Then treat twice daily until blood work returns to normal or levels off.
13. If symptoms recur, using the Assisi Loop 2-4 times daily at initial presentation may reduce severity or duration of the symptoms.
14. There should be a minimum of 2 hours between treatments for optimum battery efficiency.



**Pet Owner Responsibility.** A panel of licensed, experienced veterinarians has developed this Guide. Pet owners should use this protocol only to treat a condition listed above and as directed by a qualified veterinary clinician. Other protocols in this Guide should be used only as directed by a qualified veterinary clinician.

**Important:** Before starting treatment, please consult product label for optimal product use and safety guidelines. To learn more about the technology, visit our website.

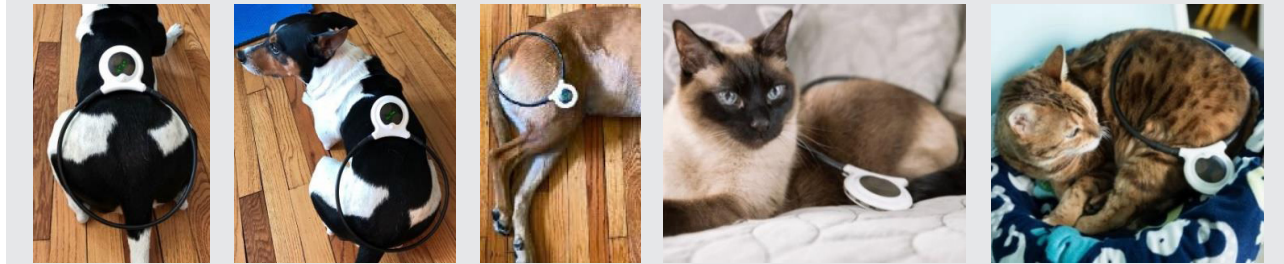
HIP PAIN OR INJURY ACUTE



**Muscle strain secondary to hip dysplasia, acute inflammation on top of chronic hip osteoarthritis, post slipped femoral neck epiphysis, Legg-Calve-Perthes disease, post hip dislocation, hip pain secondary to tick borne or autoimmune disease, post hip surgery including but not limited to femoral head ostectomy (FHO), post cemented or cementless total hip replacement surgery, post triple pelvic osteotomy (TPO).**

1. A small (10 cm) or large (20 cm) Assisi Loop can be used to treat the hip area of the pet depending on the size of the pet. A small Assisi Loop can be used for up to toy poodle-sized pets when treating just one hip. The larger Assisi Loop can be used to treat both hips simultaneously on small pets when positioned correctly. Dogs larger than a Beagle should use a large Assisi Loop and one hip at a time will need to be treated. If both hips are to be treated, there needs to be a two-hour time span between the treatments to optimize the battery life of the unit, or two units may be used simultaneously. Positioning is extremely important for optimum effect.
2. Position the pet lying down either flat on the ground or up on their elbows.
3. To treat **both hips** simultaneously on a small pet, place the Loop around the pelvis so that the Assisi Loop crosses over the hip joints. **See Pictures and Diagram**
  - a. The hip joint can be identified by placing your hand at the back of the pet, to the side of the tail, and feeling the bony pelvis and then following it around the side of the pet, past the depression and on to the top of the femur (thigh bone). **See Diagrams**
4. When treating **one hip** at a time, the hip joint is identified by placing your hand at the back of the dog, to the side of the tail, and feeling the bony pelvis and then following it around the side of the dog, past the depression and on to the top of the femur (thigh bone). **See Diagram.** The Assisi Loop center is positioned over the top of the femur (thigh bone) so that the hip joint can receive maximum therapy.
5. The signal generator can be positioned to help balance and stabilize the unit during treatment.
6. The signal generator should be located in view of the person treating the pet.

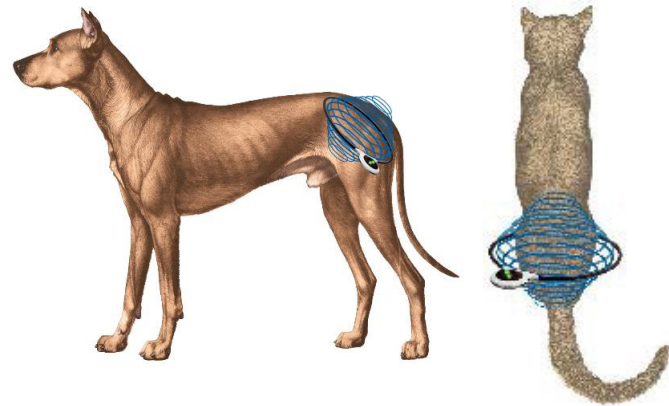
7. Do not leave the pet unattended when using this placement as small movements can change the positioning of the Loop and the area being treated.
8. Turn the unit on by depressing the button on the front of the white rubberized signal generator; green lights will illuminate about once per second. If the light is blinking 2-3 times per second, the battery is running low and a new Assisi Loop should be purchased.
9. Keep the unit in place for the full 15 minutes until the unit shuts off.
10. Use the unit 4 times daily, if possible, for 5 days. Treat twice daily for an additional 5 days or until pain is completely resolved.
11. There should be a minimum of 2 hours between treatments for optimum battery efficiency.
12. **For those treating osteoarthritis in multiple parts of the body:** If you are treating OA in multiple parts of the body, you will need to treat EACH AREA at least twice per day. We recommend:
  - Using more than one Loop so you can treat multiple areas in the same 15 minutes
  - Use the same Loop for multiple areas, being sure to wait 2 hours between treatments
  - Use the Loop Lounge for full-body treatment and the Loop to spot treat a more affected area if needed. Do not use the Loop Lounge and Loop simultaneously as the signals can cross.



**Pet Owner Responsibility.** A panel of licensed, experienced veterinarians has developed this Guide. Pet owners should use this protocol only to treat a condition listed above and as directed by a qualified veterinary clinician. Other protocols in this Guide should be used only as directed by a qualified veterinary clinician.

**Important:** Before starting treatment, please consult product label for optimal product use and safety guidelines. To learn more about the technology, visit our website.

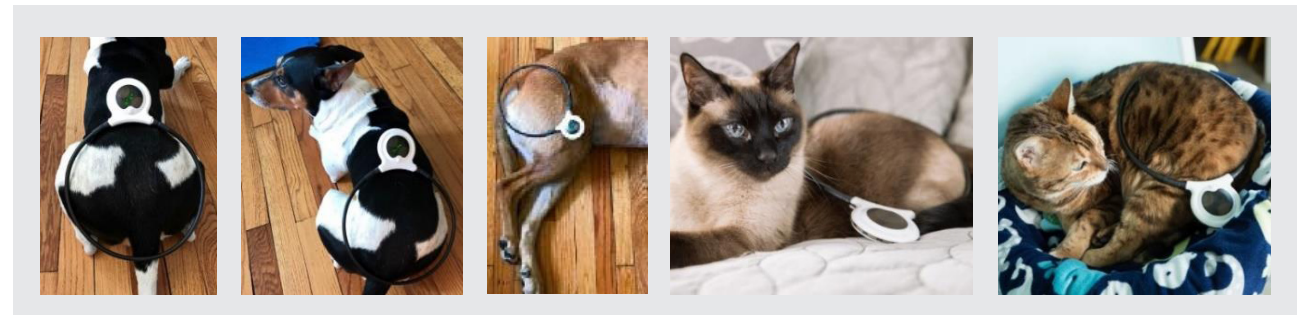
## HIP PAIN OR INJURY CHRONIC



### Osteoarthritis, chronic autoimmune disease, hip dislocation, post slipped femoral neck vepiphysis, Legg-Calve-Perthes disease.

1. A small (10 cm) or large (20 cm) Assisi Loop can be used to treat the hip area of the pet depending on the size of the pet. The small Assisi Loop can be used for up to toy poodle-sized pets when treating just one hip. The larger Assisi Loop can be used to treat both hips simultaneously on small pets when positioned correctly. Dogs larger than a Beagle should use a large Assisi Loop and one hip at a time will need to be treated. If both hips are to be treated, there needs to be a two-hour time span between the treatments to optimize the battery life of the unit, or two units may be used simultaneously. Positioning is extremely important for optimum effect.
2. Position the pet lying down either flat on the ground or up on their elbows.
3. To treat **both hips** simultaneously on a small pet, the Loop should be placed around the pelvis so that the Assisi Loop crosses over the hip joints. **See Pictures and Diagram**
  - a. The hip joint can be identified by placing your hand at the back of the pet, to the side of the tail, and feeling the bony pelvis and then following it around the side of the pet, past the depression and on to the top of the femur (thigh bone). **See Diagrams**
4. When treating **one hip** at a time, the hip joint is identified by placing your hand at the back of the dog, to the side of the tail, and feeling the bony pelvis and then following it around the side of the dog, past the depression and on to the top of the femur (thigh bone). **See Diagram.** The Assisi Loop center is positioned over the top of the femur (thigh bone) so the hip joint can receive maximum therapy.
5. The signal generator can be positioned to help balance and stabilize the unit during treatment.
6. The signal generator should be located in view of the person treating the pet.
7. Do not leave the pet unattended when using this placement as small movements can change the positioning of the Loop and the area being treated.
8. Turn the unit on by depressing the button on the front of the white rubberized signal generator; green lights will illuminate about once per second. If the light is blinking 2-3 times per second, the battery is running low and a new Assisi Loop should be purchased.

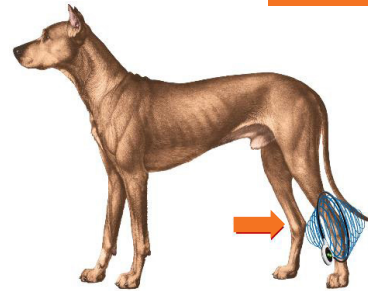
9. Keep the unit in place for the full 15 minutes until the unit shuts off.
10. Use the Assisi Loop 4 times daily, if possible, for 10 days or until there is improved mobility and pain is greatly decreased or eliminated. Use of the Loop can be tapered down to 1-2 times daily as the condition improves. Long-term chronic conditions may require as much as 3-6 weeks before tapering would be appropriate. If symptoms resolve and regular use of the Assisi Loop ceases, use the Assisi Loop as needed if pain starts to recur. If there is an acute injury on a hip that has chronic disease, follow the steps in "Hip Pain or Injury – Acute" until all pain is resolved.
11. There should be a minimum of 2 hours between treatments for optimum battery efficiency.
12. It is common to utilize the Assisi Loop after long walks or unusual activity when chronic hip issues exist.
13. **For those treating osteoarthritis in multiple parts of the body:** If you are treating OA in multiple parts of the body, you will need to treat EACH AREA at least twice per day. We recommend:
  - Using more than one Loop so you can treat multiple areas in the same 15 minutes
  - Use the same Loop for multiple areas, being sure to wait 2 hours between treatments
  - Use the Loop Lounge for full-body treatment and the Loop to spot treat a more affected area if needed. Do not use the Loop Lounge and Loop simultaneously as the signals can cross.



**Pet Owner Responsibility.** A panel of licensed, experienced veterinarians has developed this Guide. Pet owners should use this protocol only to treat a condition listed above and as directed by a qualified veterinary clinician. Other protocols in this Guide should be used only as directed by a qualified veterinary clinician.

**Important:** Before starting treatment, please consult product label for optimal product use and safety guidelines. To learn more about the technology, visit our website.

## HOCK/TARSAL PAIN OR INJURY ACUTE



**Hyperextension injury, Achilles/calcaneal tendon strain/rupture/ tendinopathy, osteochondrosis (OC), osteochondrosis dissecans (OCD), effusion secondary to tick borne or autoimmune disease.**

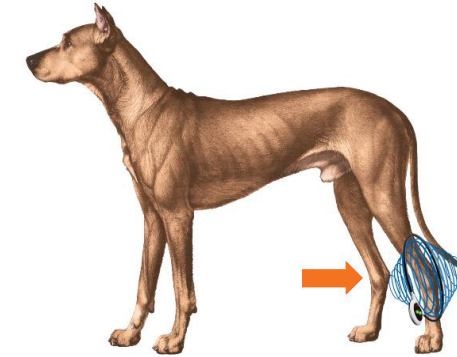
1. A small (10 cm) Assisi Loop can be used to treat the hock joint in small to medium dogs. A large- or giant-breed dog should use a large (20 cm) Loop. If both hocks are to be treated simultaneously, a large Loop should be utilized. Positioning is extremely important for optimum effect.
2. Position the pet lying down either flat on the ground or up on their elbows with their rear limbs out to one side.
3. Identify the **hock/tarsal joint(s) (arrow)** and place one or both joints in the treatment area. Lay the Assisi Loop over the area or if both hocks are to be treated then place the Loop between the hocks so as to treat them simultaneously. **See Pictures and Diagram**
4. The signal generator can be positioned to help balance and stabilize the unit during treatment.
5. The signal generator should be located in view of the person treating the pet.
6. Do not leave the pet unattended when using this placement as small movements can change the positioning of the Loop and the area being treated.
7. Turn the unit on by depressing the button on the front of the white rubberized signal generator; green lights will illuminate about once per second. If the light is blinking 2-3 times per second, the battery is running low and a new Assisi Loop should be purchased.
8. Keep the unit in place for the full 15 minutes until the unit shuts off.
9. Use the unit 4 times daily, if possible, for 3-5 days. Treat twice daily for an additional 5 days or until pain is completely resolved. Then use as needed.
10. There should be a minimum of 2 hours between treatments for optimum battery efficiency.



**Pet Owner Responsibility.** A panel of licensed, experienced veterinarians has developed this Guide. Pet owners should use this protocol only to treat a condition listed above and as directed by a qualified veterinary clinician. Other protocols in this Guide should be used only as directed by a qualified veterinary clinician.

**Important:** Before starting treatment, please consult product label for optimal product use and safety guidelines. To learn more about the technology, visit our website.

## HOCK/TARSAL PAIN OR INJURY CHRONIC



**Hyperextension with secondary pain, osteoarthritis, osteochondrosis (OC), osteochondrosis dissecans (OCD), Achilles/calcaneal tendon strain/rupture/ tendinopathy.**

1. A small (10 cm) Assisi Loop can be used to treat the hock joint in small to medium dogs. A large- or giant-breed dog should use a large (20 cm) Loop. If both hocks are to be treated simultaneously, a large Loop should be utilized. Positioning is extremely important for optimum effect.
2. Position the pet lying down either flat on the ground or up on their elbows with their rear limbs out to one side.
3. Identify the **hock/tarsal joint(s) (arrow)** and place one or both joints in the treatment area. Lay the Assisi Loop over the area or if both hocks are to be treated then place the Loop between the hocks so as to treat them simultaneously. **See Pictures and Diagram**
4. The signal generator can be positioned to help balance and stabilize the unit during treatment.
5. The signal generator should be located in view of the person treating the pet.
6. Do not leave the pet unattended when using this placement as small movements can change the positioning of the Loop and the area being treated.
7. Turn the unit on by depressing the button on the front of the white rubberized signal generator; green lights will illuminate about once per second. If the light is blinking 2-3 times per second, the battery is running low and a new Assisi Loop should be purchased.
8. Keep the unit in place for the full 15 minutes until the unit shuts off.
9. Use the Assisi Loop 4 times daily, if possible, for 10 days or until there is improved mobility and pain is greatly decreased or eliminated. Use of the Loop can be tapered down to 1-2 times daily as the condition improves. Long-term chronic conditions may require as much as 3-6 weeks before tapering would be appropriate. If symptoms resolve and regular use of the Assisi Loop ceases, use the Assisi Loop as needed if pain starts to recur. If there is an acute injury at a hock/tarsal joint that has chronic disease, follow the steps in "Hock/Tarsal Pain or Injury – Acute" until all pain is resolved.
10. There should be a minimum of 2 hours between treatments for optimum battery efficiency.
11. It is common to utilize the Assisi Loop after long walks or unusual activity when chronic hock issues exist.

## HOCK/TARSAL PAIN OR INJURY CHRONIC - CONTINUED

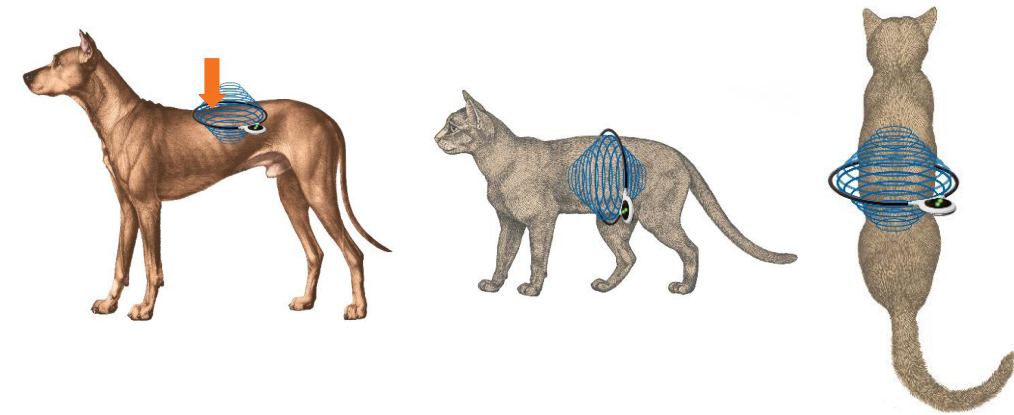
12. **For those treating osteoarthritis in multiple parts of the body:** If you are treating OA in multiple parts of the body, you will need to treat EACH AREA at least twice per day. We recommend:
- Using more than one Loop so you can treat multiple areas in the same 15 minutes
  - Use the same Loop for multiple areas, being sure to wait 2 hours between treatments
  - Use the Loop Lounge for full-body treatment and the Loop to spot treat a more affected area if needed. Do not use the Loop Lounge and Loop simultaneously as the signals can cross.



**Pet Owner Responsibility.** A panel of licensed, experienced veterinarians has developed this Guide. Pet owners should use this protocol only to treat a condition listed above and as directed by a qualified veterinary clinician. Other protocols in this Guide should be used only as directed by a qualified veterinary clinician.

**Important:** Before starting treatment, please consult product label for optimal product use and safety guidelines. To learn more about the technology, visit our website.

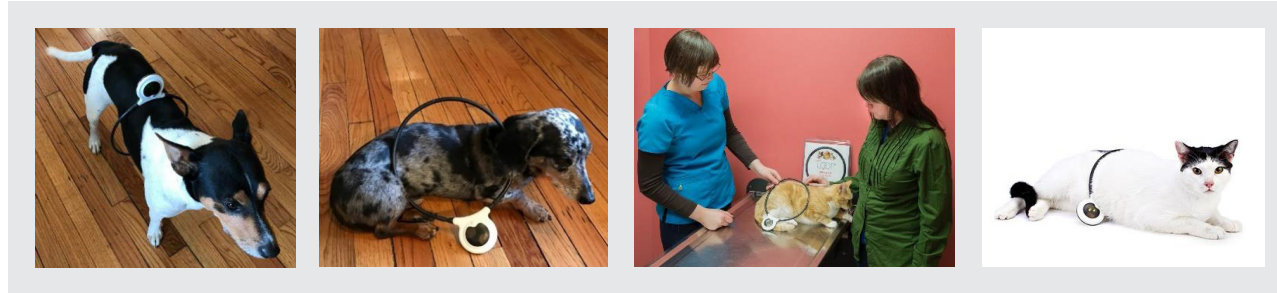
## KIDNEY DISEASE – ACUTE AND CHRONIC



**Acute renal failure, renal insufficiency, chronic kidney disease.**

1. A large (20 cm) Assisi Loop should be used to treat the kidneys of the pet.
2. The pet can be treated with an Assisi Loop positioned on its back, around its abdomen, or from the side. Positioning of the Assisi Loop on the back or around the abdomen are the preferred positions.
3. Position the pet lying down either flat on the ground or up on their elbows. Place the Assisi Loop on the pet's back, preferably, or side if the back is not an option. Center the Loop about **2 inches behind the last rib**. See Pictures and Diagrams (the arrow indicates the position of the last rib)
4. The Loop can also be placed around the patient if the size of the patient and the size of the Assisi Loop are appropriate for this positioning to be utilized. To place the Loop around the abdomen of the pet, it is usually easier to place the Assisi Loop around the rear feet and slide it up over the hips, making sure the tail goes through the Loop as it is being slid up the rear limbs. The Assisi Loop is slid to a position 2 inches behind the last rib. See Pictures and Diagrams (the arrow indicates the position of the last rib)
5. **CAUTION: Do not force the pet's shoulders, haunches, or torso through the coil. If they do not slip easily through the coil, place the coil flat against, over, or under animal's torso, as shown in the related images. Forcing the animal through the coil can be traumatic to the pet and may overly stress the connection of the coil to the circuit board inside the Loop case.**
6. The signal generator should be located in view of the person treating the pet.
7. Do not leave the pet unattended when using this placement as small movements can change the positioning of the Loop and the area being treated.
8. Turn the unit on by depressing the button on the front of the white rubberized signal generator; green lights will illuminate about once per second. If the light is blinking 2-3 times per second, the battery is running low and a new Assisi Loop should be purchased.
9. Keep the unit in place for the full 15 minutes until the unit shuts off.
10. In cases of severe disease use the unit 3-4 times daily, if possible, until clinical signs have resolved. Then treat twice daily until blood work returns to normal or levels off.
11. There should be a minimum of 2 hours between treatments for optimum battery efficiency.

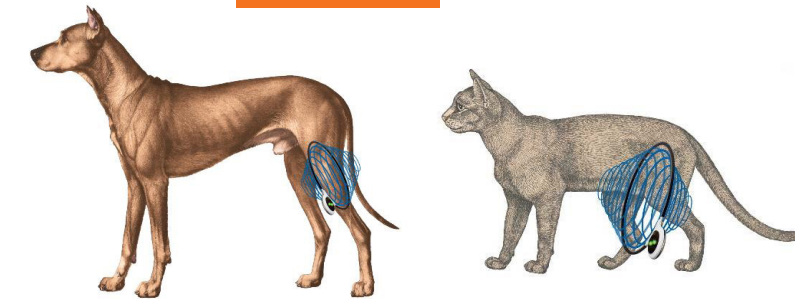
## KIDNEY DISEASE – ACUTE AND CHRONIC - CONTINUED



**Pet Owner Responsibility.** A panel of licensed, experienced veterinarians has developed this Guide. Pet owners should use this protocol only to treat a condition listed above and as directed by a qualified veterinary clinician. Other protocols in this Guide should be used only as directed by a qualified veterinary clinician.

**Important:** Before starting treatment, please consult product label for optimal product use and safety guidelines. To learn more about the technology, visit our website.

## KNEE PAIN OR INJURY ACUTE



**Patella luxation, trauma, effusion secondary to tick borne or autoimmune disease, acute on chronic osteoarthritis, osteochondrosis (OC), osteochondrosis dissecans (OCD), cruciate sprain, knee strain, partial cruciate tear, full cruciate tear.**

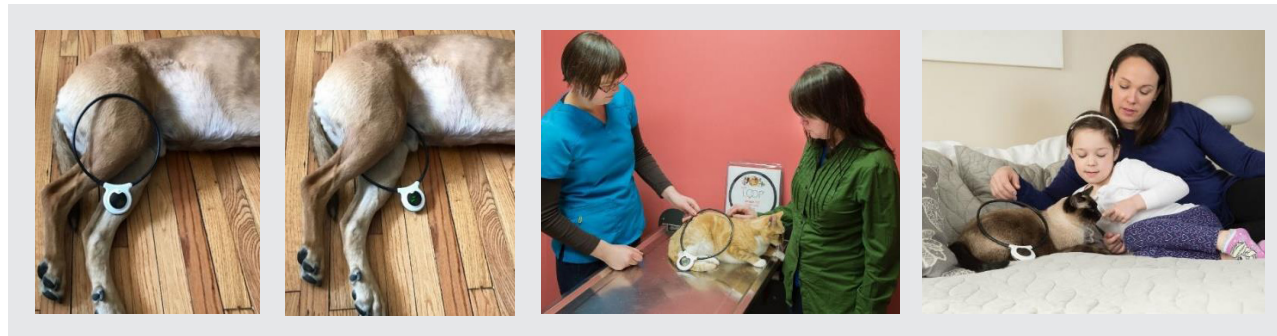
1. A small (10 cm) or large (20 cm) Assisi Loop can be used to treat the knee area of the pet depending on the positioning of the Loop and size of the pet. A small Assisi Loop can be used for up to toy poodle-sized pets when treating the pet from inside or outside of the knee. Larger pets need the larger Loop for this positioning. Positioning is extremely important for optimum effect. **See Diagrams and Pictures**
2. The Assisi Loop can be placed on the outside of the knee if you are treating one knee. **See Diagrams and Pictures**
3. If the goal is to treat both knees, the pet should be lying on their side with their knees pulled down and back so that both are positioned below the abdominal cavity. Place the Loop between the knees so as to treat them simultaneously. **See Picture**
4. Please supervise your pet when using the Assisi Loop and remove the Loop immediately after the therapy session has ended.
5. The signal generator can be positioned to help balance and stabilize the unit during treatment.
6. The signal generator should be located in view of the person treating the pet.
7. Do not leave the pet unattended when using this placement as small movements can change the positioning of the Loop and the area being treated.
8. Turn the unit on by depressing the button on the front of the white rubberized signal generator; green lights will illuminate about once per second. If the light is blinking 2-3 times per second, the battery is running low and a new Assisi Loop should be purchased.
9. Keep the unit in place for the full 15 minutes until the unit shuts off.
10. Use the unit 4 times daily, if possible, for 3-5 days. Treat twice daily for an additional 5 days or until pain is completely resolved.
11. There should be a minimum of 2 hours between treatments for optimum battery efficiency.



## KNEE PAIN OR INJURY ACUTE - CONTINUED

12. **For those treating osteoarthritis in multiple parts of the body:** If you are treating OA in multiple parts of the body, you will need to treat EACH AREA at least twice per day. We recommend:

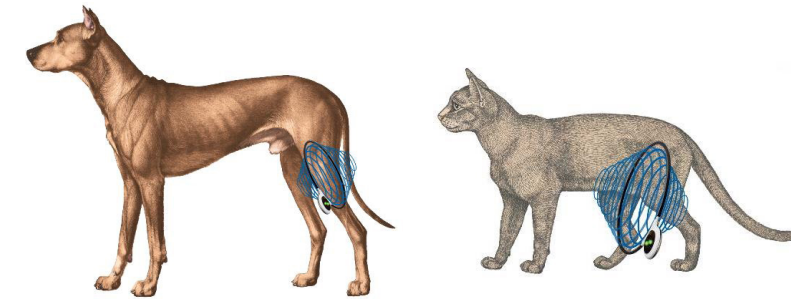
- Using more than one Loop so you can treat multiple areas in the same 15 minutes
- Use the same Loop for multiple areas, being sure to wait 2 hours between treatments
- Use the Loop Lounge for full-body treatment and the Loop to spot treat a more affected area if needed. Do not use the Loop Lounge and Loop simultaneously as the signals can cross.



**Pet Owner Responsibility.** A panel of licensed, experienced veterinarians has developed this Guide. Pet owners should use this protocol only to treat a condition listed above and as directed by a qualified veterinary clinician. Other protocols in this Guide should be used only as directed by a qualified veterinary clinician.

**Important:** Before starting treatment, please consult product label for optimal product use and safety guidelines. To learn more about the technology, visit our website.

## KNEE PAIN OR INJURY CHRONIC

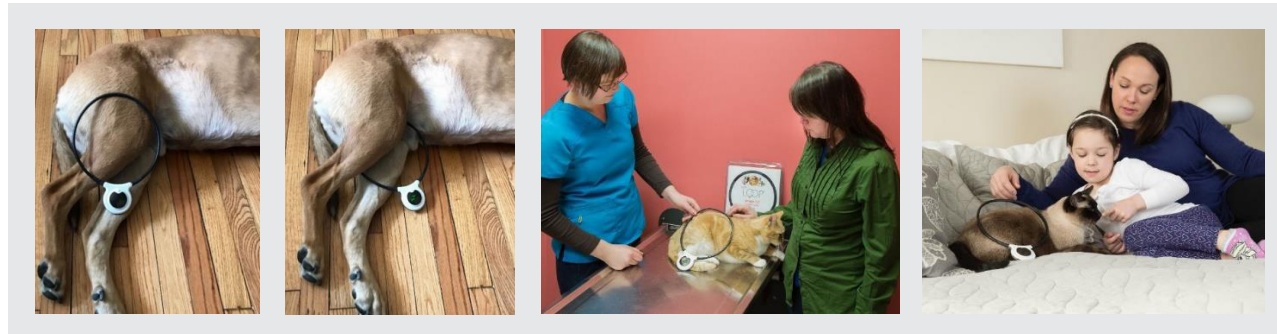


**Patella crepitus, osteoarthritis, osteochondrosis (OC), osteochondrosis dissecans (OCD), patella luxation, chronic effusion, chronic cruciate disease.**

1. A small (10 cm) or large (20 cm) Assisi Loop can be used to treat the knee area of the pet depending on the positioning of the Loop and size of the pet. The small Assisi Loop can be used for up to Beagle-sized pets when treating the pet from inside or outside of the knee. Larger pets need the larger Loop for this positioning. Positioning is extremely important for optimum effect. **See Diagrams and Pictures**
2. Place the Assisi Loop on the outside of the knee if you are treating one knee. **See Diagrams and Pictures**
3. If the goal is to treat both knees, the pet should be lying on their side with their knees pulled down and back so that both are positioned below the abdominal cavity. The Loop is then placed between the knees so as to treat them simultaneously. **See Picture**
4. Please supervise your pet when using the Assisi Loop and remove the Loop immediately after the therapy session has ended.
5. The signal generator can be positioned to help balance and stabilize the unit during treatment.
6. The signal generator should be located in view of the person treating the pet.
7. Do not leave the pet unattended when using this placement as small movements can change the positioning of the Loop and the area being treated.
8. Turn the unit on by depressing the button on the front of the white rubberized signal generator; green lights will illuminate about once per second. If the light is blinking 2-3 times per second, the battery is running low and a new Assisi Loop should be purchased.
9. Keep the unit in place for the full 15 minutes until the unit shuts off.
10. Use the Assisi Loop 4 times daily, if possible, for 10 days or until there is improved mobility and pain is greatly decreased or eliminated. Use of the Loop can be tapered down to 1-2 times daily as the condition improves. Long-term chronic conditions may require as much as 3-6 weeks before tapering would be appropriate. If symptoms resolve and regular use of the Assisi Loop ceases, use the Assisi Loop as needed if pain starts to recur. If there is an acute injury in a knee that has chronic disease, follow the steps in "Knee Pain or Injury – Acute" until all pain is resolved.
11. There should be a minimum of 2 hours between treatments for optimum battery efficiency.

## KNEE PAIN OR INJURY CHRONIC - CONTINUED

12. It is common to utilize the Assisi Loop after long walks or unusual activity when chronic knee issues exist.
13. **For those treating osteoarthritis in multiple parts of the body:** If you are treating OA in multiple parts of the body, you will need to treat EACH AREA at least twice per day. We recommend:
  - Using more than one Loop so you can treat multiple areas in the same 15 minutes
  - Use the same Loop for multiple areas, being sure to wait 2 hours between treatments
  - Use the Loop Lounge for full-body treatment and the Loop to spot treat a more affected area if needed. Do not use the Loop Lounge and Loop simultaneously as the signals can cross.

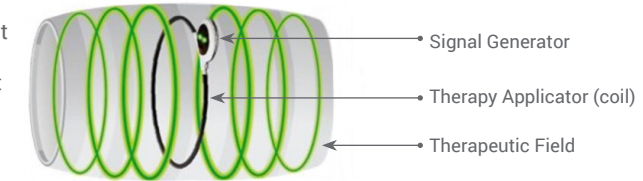


**Pet Owner Responsibility.** A panel of licensed, experienced veterinarians has developed this Guide. Pet owners should use this protocol only to treat a condition listed above and as directed by a qualified veterinary clinician. Other protocols in this Guide should be used only as directed by a qualified veterinary clinician.

**Important:** Before starting treatment, please consult product label for optimal product use and safety guidelines. To learn more about the technology, visit our website.

## LAMENESS/PAIN – JOINT

Treatment depth is about 2/3 the diameter of the applicator, extending out on either side.



### Joint injury, tendon injury, ligament injury, sprain, tear, rupture, torn ligaments, osteochondrosis (OC), osteochondrosis dissecans (OCD).

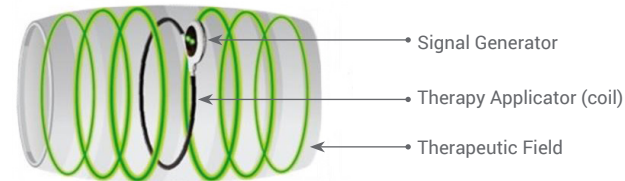
1. Locate the joint that is causing lameness in the “Contents” and follow the guidelines for that joint.
2. If the lameness has been evident for less than 3 weeks, follow the acute protocol.
3. If the lameness has been evident for more than 3 weeks, follow the chronic protocol.

**Pet Owner Responsibility.** A panel of licensed, experienced veterinarians has developed this Guide. Pet owners should use this protocol only to treat a condition listed above and as directed by a qualified veterinary clinician. Other protocols in this Guide should be used only as directed by a qualified veterinary clinician.

**Important:** Before starting treatment, please consult product label for optimal product use and safety guidelines. To learn more about the technology, visit our website.

## LAMENESS/PAIN – NON-JOINT RELATED

Treatment depth is about 2/3 the diameter of the applicator, extending out on either side.



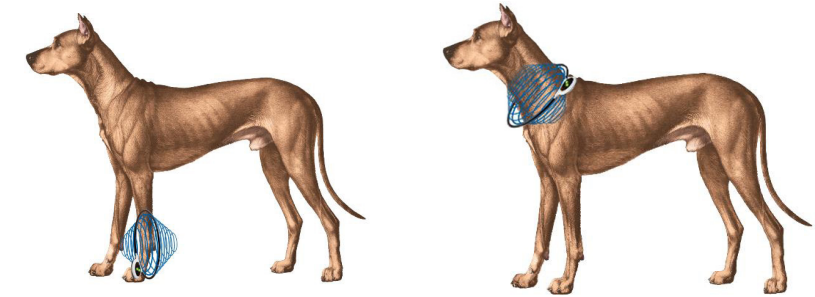
**Panosteitis, osteopetrosis, muscle injury, skin injury, cellulitis, hypertrophic osteodystrophy, muscle tears, pulled muscle, rupture, broken disc, broken bone, stress fracture.**

1. Locate the area that is causing lameness. Positioning is extremely important for optimum effect.
2. Choose an Assisi Loop that is larger than the injury to be treated if possible.
3. If the lesion is larger than the Assisi Loop, it will take multiple sessions to treat the entire lesion, or multiple Assisi Loops can be used at the same time.
4. Position the pet lying down either flat on the ground or up on their elbows with their rear limbs out to one side with the lesion site visible and accessible.
5. Identify the lesion and place the Assisi Loop with the center of the Loop positioned over the center of the lesion, completely surrounding the lesion if possible.
6. The signal generator can be positioned to help balance and stabilize the unit during treatment.
7. The signal generator should be located in view of the person treating the pet.
8. Do not leave the pet unattended when using this placement as small movements can change the positioning of the Loop and the area being treated.
9. Turn the unit on by depressing the button on the front of the white rubberized signal generator; green lights will illuminate about once per second. If the light is blinking 2-3 times per second, the battery is running low and a new Assisi Loop should be purchased.
10. Keep the unit in place for the full 15 minutes until the unit shuts off.
11. Use the unit 2-4 times daily to speed healing of the lesion. Severe issues should be treated 4 times daily if possible; milder issues may be treated twice daily if 4 times daily is not feasible. 4 times daily will be more efficacious. Continue using the loop until the injury has resolved.
12. There should be a minimum of 2 hours between treatments for optimum battery efficiency.

**Pet Owner Responsibility.** A panel of licensed, experienced veterinarians has developed this Guide. Pet owners should use this protocol only to treat a condition listed above and as directed by a qualified veterinary clinician. Other protocols in this Guide should be used only as directed by a qualified veterinary clinician.

**Important:** Before starting treatment, please consult product label for optimal product use and safety guidelines. To learn more about the technology, visit our website.

## LICK GRANULOMA

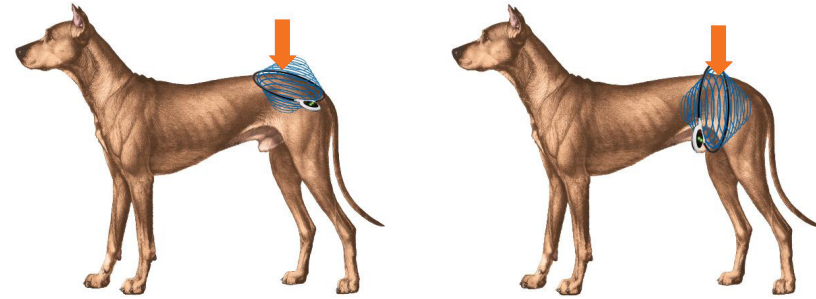


1. A small (10 cm) Assisi Loop can be used at the site of the lick granuloma. A second Assisi Loop can be used at the lower cervical (neck) area at the same time if it is suspected that the licking is secondary to a lower cervical nerve impingement. If the same Assisi Loop is to be used for both locations, wait 2 hours between sessions for optimum battery efficiency. Positioning is extremely important for optimum effect.
2. Position the pet lying down either flat on the ground or up on their elbows with their rear limbs out to one side with the lick granuloma visible and accessible.
3. Place one Assisi Loop with the center of the Loop over the center of the lick granuloma. Place the other Assisi Loop over the head just in front of the shoulders. **See Diagram**
  - a. Place the Assisi Loop over the head of the pet with the signal generator toward the ground. Place the top of the Loop just in front of the shoulder blades; this will allow proper treatment as well as help hold the Loop in place. **See Pictures and Diagram**
  - b. If the pet is head shy, cover their eyes while placing the Loop over their head.
4. The signal generator can be positioned to help balance and stabilize the unit during treatment.
5. The signal generator should be located in view of the person treating the pet.
6. Do not leave the pet unattended when using this placement as small movements can change the positioning of the Loop and the area being treated.
7. Turn each unit on by depressing the button on the front of the white rubberized signal generator; green lights will illuminate about once per second. If the light is blinking 2-3 times per second, the battery is running low and a new Assisi Loop should be purchased.
8. Keep the units in place for the full 15 minutes until they shut off.
9. Use the units 4 times daily at the lick granuloma and neck, if possible, to speed healing. Treat until the granuloma has resolved. If the pet starts licking again, treat 4 times daily, if possible, for at least 5 days to try to prevent a new granuloma forming.
10. There should be a minimum of 2 hours between treatments for optimum battery efficiency.

**Pet Owner Responsibility.** A panel of licensed, experienced veterinarians has developed this Guide. Pet owners should use this protocol only to treat a condition listed above and as directed by a qualified veterinary clinician. Other protocols in this Guide should be used only as directed by a qualified veterinary clinician.

**Important:** Before starting treatment, please consult product label for optimal product use and safety guidelines. To learn more about the technology, visit our website.

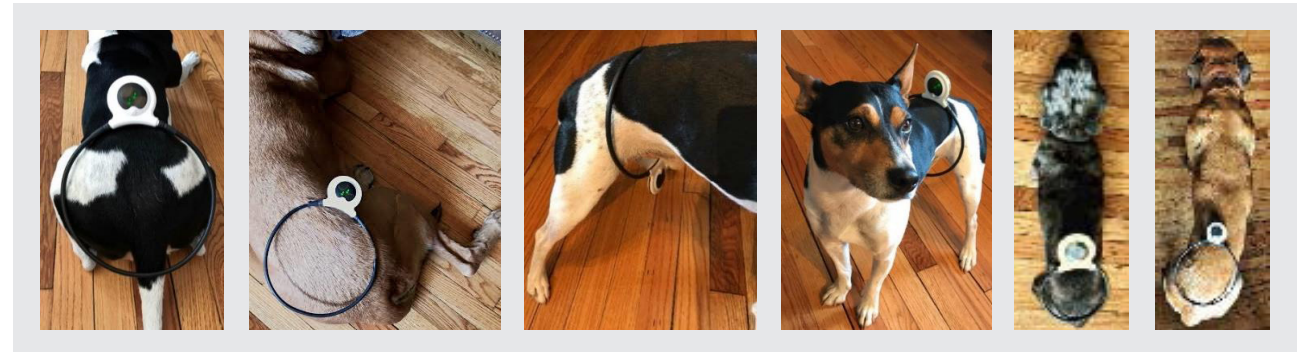
## LUMBOSACRAL PAIN OR INJURY ACUTE



Lumbosacral stenosis, spina bifida, intervertebral disc disease (IVDD), back pain, blown disc, hemilaminectomy, fibrocartilaginous embolism (FCE), neuropathy, pain from spondylosis, pain on extension of the tail, pressure on the sacrum, or full extension of the hip when L7 is stabilized, fecal or urinary incontinence, urinary obstructions.

1. A small (10 cm) or large (20 cm) Assisi Loop can be used to treat the Lumbosacral area of the pet depending on the size of the pet. The small Assisi Loop can be used for up to toy poodle-sized pets. A large Assisi Loop should be used to treat patients larger than a Beagle. Positioning is extremely important for optimum effect.
2. Position the pet lying down either flat on the ground or up on their elbows.
3. To treat the lumbosacral area, first identify the wings of the ilium; these are the **highest points of the pelvis (arrow)**. Place the center of the Assisi Loop directly between them. **See Pictures and Diagram**
4. If the Assisi Loop is able to fit around the pet's body easily, the Loop can be placed around the abdomen just in front of the rear limbs for optimum therapeutic effects. **See Pictures and Diagram**
5. **CAUTION: Do not force the pet's shoulders, haunches, or torso through the coil. If they do not slip easily through the coil, place the coil flat against, over, or under animal's torso, as shown in the related images. Forcing the animal through the coil can be traumatic to the pet and may overly stress the connection of the coil to the circuit board inside the Loop case.**
6. The signal generator can be positioned to help balance and stabilize the unit during treatment.
7. The signal generator should be located in view of the person treating the pet.
8. Do not leave the pet unattended when using this placement as small movements can change the positioning of the Loop and the area being treated.
9. Turn the unit on by depressing the button on the front of the white rubberized signal generator; green lights will illuminate about once per second. If the light is blinking 2-3 times per second, the battery is running low and a new Assisi Loop should be purchased.
10. Keep the unit in place for the full 15 minutes until the unit shuts off.

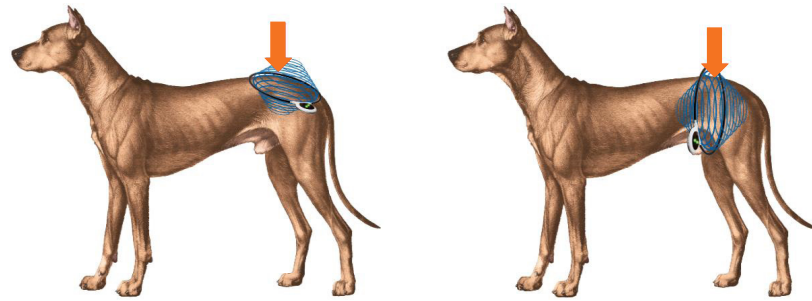
11. Use the unit 4 times daily, if possible, for 5 days. Treat twice daily for an additional 5 days or until pain is completely resolved, even after activity.
12. There should be a minimum of 2 hours between treatments for optimum battery efficiency.
13. If Prednisone is administered and tapered, the Assisi Loop can be tapered after the Prednisone is discontinued.
14. Lumbosacral disease can be a lifelong condition where significant activity creates inflammation. Many patients benefit significantly from having once-daily treatments after the clinical signs have resolved to prevent recurrences.



**Pet Owner Responsibility.** A panel of licensed, experienced veterinarians has developed this Guide. Pet owners should use this protocol only to treat a condition listed above and as directed by a qualified veterinary clinician. Other protocols in this Guide should be used only as directed by a qualified veterinary clinician.

**Important:** Before starting treatment, please consult product label for optimal product use and safety guidelines. To learn more about the technology, visit our website.

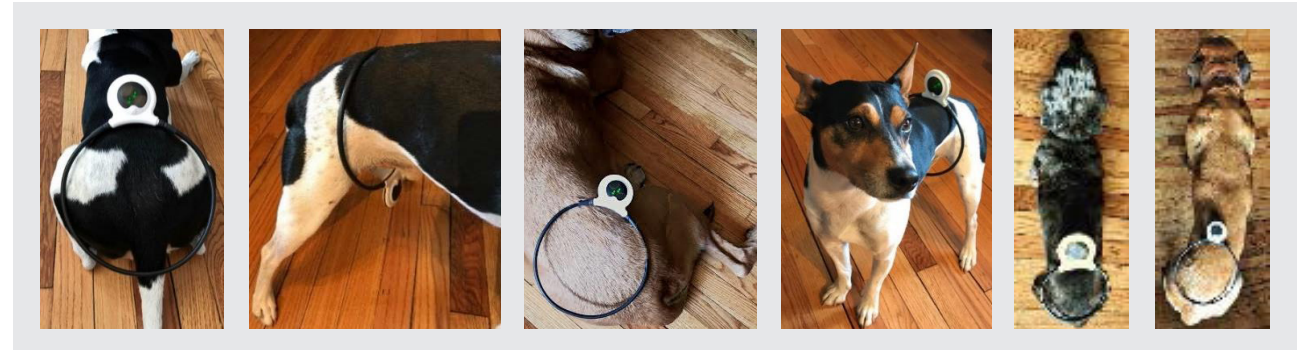
## LUMBOSACRAL PAIN OR INJURY CHRONIC



Lumbosacral stenosis, spina bifida, degenerative spinal changes, intervertebral disc disease (IVDD), back pain, blown disc, hemilaminectomy, fibrocartilaginous embolism (FCE), neuropathy, pain from spondylosis, diffuse idiopathic skeletal hyperostosis, pain on extension of the tail, pressure on the sacrum, or full extension of the hip when L7 is stabilized, fecal or urinary incontinence, urinary obstructions.

1. A small (10 cm) or large (20 cm) Assisi Loop can be used to treat the Lumbosacral area of the pet depending on the size of the pet. Small Assisi Loops can be used for up to toy poodle-sized pets. Large Assisi Loops should be used to treat patients larger than a Beagle. Positioning is extremely important for optimum effect.
2. Position the pet lying down either flat on the ground or up on their elbows.
3. To treat the lumbosacral area, the wings of the ilium are identified; these are the **highest points of the pelvis (arrow)**. Place the center of the Assisi Loop directly between them. **See Pictures and Diagram**
4. If the Assisi Loop is able to fit around the pet's body easily, the Loop can be placed around the abdomen just in front of the rear limbs for optimum therapeutic effects. **See Pictures and Diagram**
5. **CAUTION: Do not force the pet's shoulders, haunches, or torso through the coil. If they do not slip easily through the coil, place the coil flat against, over, or under animal's torso, as shown in the related images. Forcing the animal through the coil can be traumatic to the pet and may overly stress the connection of the coil to the circuit board inside the Loop case.**
6. The signal generator can be positioned to help balance and stabilize the unit during treatment.
7. The signal generator should be located in view of the person treating the pet.
8. Do not leave the pet unattended when using this placement as small movements can change the positioning of the Loop and the area being treated.
9. Turn the unit on by depressing the button on the front of the white rubberized signal generator; green lights will illuminate about once per second. If the light is blinking 2-3 times per second, the battery is running low and a new Assisi Loop should be purchased.
10. Keep the unit in place for the full 15 minutes until the unit shuts off.

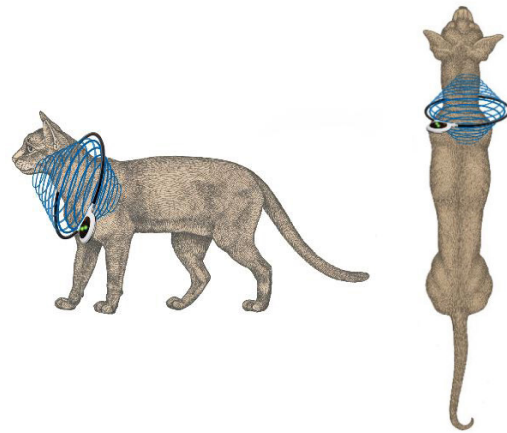
11. Use the unit twice daily for 5-10 days or until pain is completely resolved. Then use as needed.
12. There should be a minimum of 2 hours between treatments for optimum battery efficiency.
13. If Prednisone is administered and tapered, the Assisi Loop can be tapered after the Prednisone is discontinued.
14. Lumbosacral disease can be a lifelong condition where significant activity creates inflammation. Many patients benefit significantly from having once-daily treatments after the clinical signs have resolved to prevent recurrences.



**Pet Owner Responsibility.** A panel of licensed, experienced veterinarians has developed this Guide. Pet owners should use this protocol only to treat a condition listed above and as directed by a qualified veterinary clinician. Other protocols in this Guide should be used only as directed by a qualified veterinary clinician.

**Important:** Before starting treatment, please consult product label for optimal product use and safety guidelines. To learn more about the technology, visit our website.

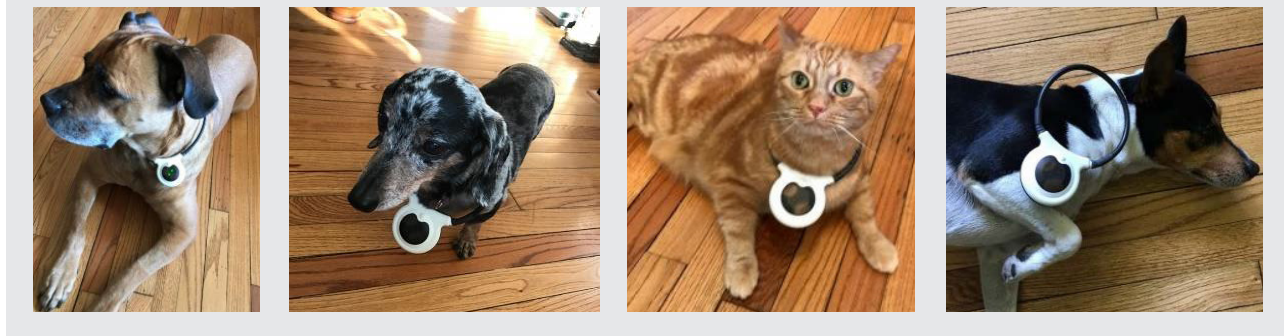
## NECK PAIN OR INJURY – LOWER CERVICAL ACUTE



Post-surgery, acute injury (sports injury, i.e., tumble out of chute, run into fence), post athletic activity, Wobbler Syndrome, intervertebral disc disease (IVDD), neck pain, blown disc, ventral slot, fibrocartilaginous embolism (FCE), pain from spondylosis, megaesophagus, allergic reaction with difficulty breathing, neuropathy.

1. A small (10 cm) or large (20 cm) Assisi Loop can be used to treat the lower cervical (neck) area in the pet depending on the size of the pet. Dachshund- and Chihuahua-sized pets do best with a small Assisi Loop. Larger breeds need the larger Loop. Positioning is extremely important for optimum effect.
2. Position the pet lying down either flat on the ground or up on their elbows.
3. Place the Assisi Loop on the side of the neck if you are confident of the location of the injury. If not confident of the location of the injury, place the Loop over the head. **See Pictures and Diagrams**
4. Placing the Loop over the head treats a larger section of the spine making it easier to position the Loop properly and be confident that you are treating the correct area.
5. Placing the Assisi Loop over the head:
  - a. Place the Assisi Loop over the head of the pet with the signal generator toward the ground. Place the top of the Loop just in front of the pet's shoulders; this will allow proper treatment as well as help hold the Loop in place. **See Pictures and Diagrams**
  - b. If the pet is head shy, cover their eyes while placing the Loop over the head.
6. **CAUTION: Do not force the Assisi Loop over the pet's head. If it does not slip easily over the head, place the Loop against the animal's head, resting on top of the ears and nose. Forcing the animal's head through the coil can be traumatic to the pet and may overly stress the connection of the coil to the circuit board inside the Loop case.**
7. The signal generator should be located in view of the person treating the pet.
8. Do not leave the pet unattended when using this placement as small movements can change the positioning of the Loop and the area being treated.

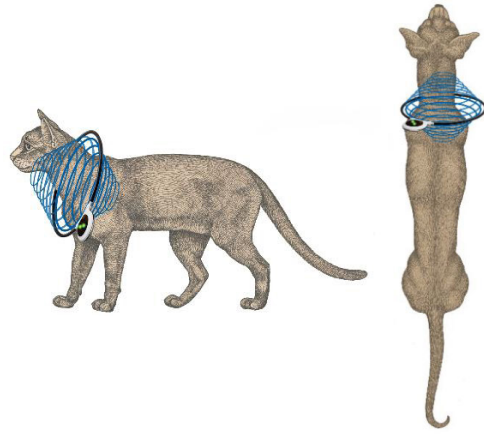
9. Turn the unit on by depressing the button on the front of the white rubberized signal generator; green lights will illuminate about once per second. If the light is blinking 2-3 times per second, the battery is running low and a new Assisi Loop should be purchased.
10. Keep the unit in place for the full 15 minutes until the unit shuts off.
11. Use the unit 4 times daily, if possible, for 3-5 days. Treat twice daily for an additional 5 days or until pain is completely resolved.
12. There should be a minimum of 2 hours between treatments for optimum battery efficiency.
13. If Prednisone is administered and tapered, the Assisi Loop can be tapered after the Prednisone is discontinued.
14. Wobbler Syndrome can be a lifelong condition where significant activity creates inflammation. Many patients benefit significantly from having once-daily treatments after the clinical signs have resolved to prevent recurrences.
15. It can also be beneficial to utilize the Assisi Loop after unusual amounts of activity as a way to minimize discomfort when chronic neck issues exist.



**Pet Owner Responsibility.** A panel of licensed, experienced veterinarians has developed this Guide. Pet owners should use this protocol only to treat a condition listed above and as directed by a qualified veterinary clinician. Other protocols in this Guide should be used only as directed by a qualified veterinary clinician.

**Important:** Before starting treatment, please consult product label for optimal product use and safety guidelines. To learn more about the technology, visit our website.

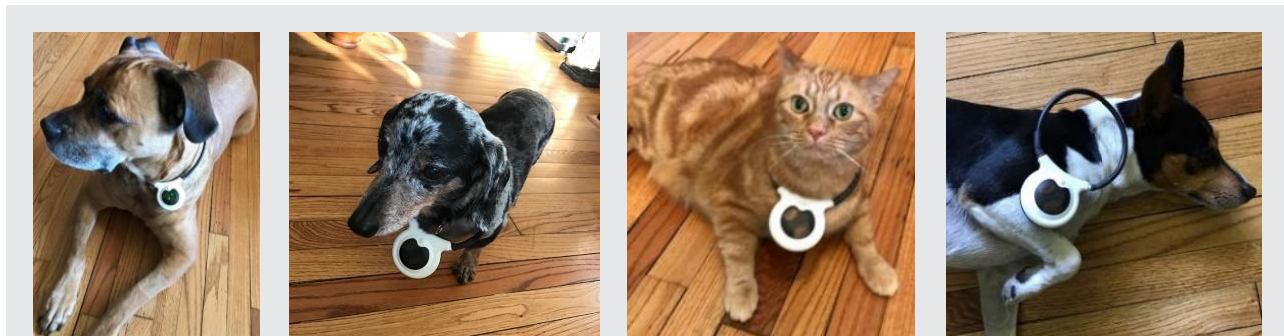
## NECK PAIN OR INJURY – LOWER CERVICAL CHRONIC



**Older sports injury, osteoarthritis, Wobbler Syndrome, intervertebral disc disease (IVDD), neck pain, blown disc, ventral slot, fibrocartilaginous embolism (FCE), pain from spondylosis, degenerative spinal changes, neuropathy.**

1. A small (10 cm) or large (20 cm) Assisi Loop can be used to treat the lower cervical (neck) area in the pet depending on the size of the pet. Dachshund- and Chihuahua-sized pets do best with a small Assisi Loop. Larger breeds need the larger Loop. Positioning is extremely important for optimum effect.
2. Position the pet lying down either flat on the ground or up on their elbows.
3. Place the Assisi Loop on the side of the neck if you are confident of the location of the injury. If not confident of the location of the injury, place the Loop over the head. **See Pictures and Diagrams**
4. Placing the Loop over the head treats a larger section of the spine making it easier to position the Loop properly and be confident that you are treating the correct area. **See Pictures and Diagrams**
5. Placing the Assisi Loop over the head:
  - a. Place the Assisi Loop over the head of the pet with the signal generator toward the ground. Place the top of the Loop just in front of the pet's shoulders; this will allow proper treatment as well as help hold the Loop in place. **See Pictures and Diagrams**
  - b. If the pet is head shy, cover their eyes while placing the Loop over the head.
6. **CAUTION: Do not force the Assisi Loop over the pet's head. If it does not slip easily over the head, place the Loop against the animal's head, resting on top of the ears and nose. Forcing the animal's head through the coil can be traumatic to the pet and may overly stress the connection of the coil to the circuit board inside the Loop case.**
7. The signal generator should be located in view of the person treating the pet.
8. Do not leave the pet unattended when using this placement as small movements can change the positioning of the Loop and the area being treated.

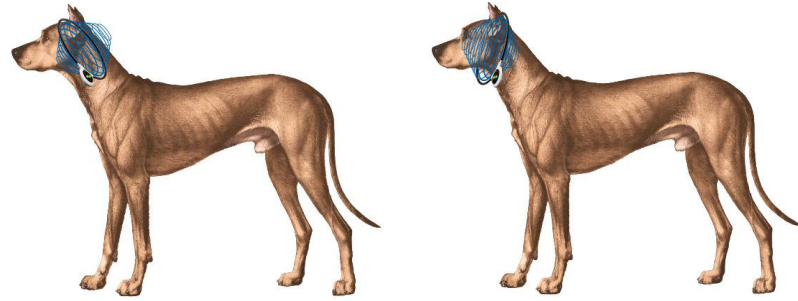
9. Turn the unit on by depressing the button on the front of the white rubberized signal generator; green lights will illuminate about once per second. If the light is blinking 2-3 times per second, the battery is running low and a new Assisi Loop should be purchased.
10. Keep the unit in place for the full 15 minutes until the unit shuts off.
11. Use the Assisi Loop 4 times daily, if possible, for 10 days or until there is improved mobility and pain is greatly decreased or eliminated. Use of the Loop can be tapered down to 1-2 times daily as the condition improves. Long-term chronic conditions may require as much as 3-6 weeks before tapering would be appropriate. If symptoms resolve and regular use of the Assisi Loop ceases, use the Assisi Loop as needed if pain starts to recur. If there is an acute injury in a neck that has chronic disease, follow the steps in "Neck Pain or Injury – Lower Cervical – Acute" until all pain is resolved.
12. There should be a minimum of 2 hours between treatments for optimum battery efficiency
13. If Prednisone is administered and tapered, the Assisi Loop can be tapered after the Prednisone is discontinued.
14. Wobbler Syndrome can be a lifelong condition where significant activity creates inflammation. Many patients benefit significantly from having once-daily treatments after the clinical signs have resolved to prevent recurrences.
15. It is common to utilize the Assisi Loop after unusual activity when chronic neck issues exist.
16. **For those treating osteoarthritis in multiple parts of the body:** If you are treating OA in multiple parts of the body, you will need to treat EACH AREA at least twice per day. We recommend:
  - Using more than one Loop so you can treat multiple areas in the same 15 minutes
  - Use the same Loop for multiple areas, being sure to wait 2 hours between treatments
  - Use the Loop Lounge for full-body treatment and the Loop to spot treat a more affected area if needed. Do not use the Loop Lounge and Loop simultaneously as the signals can cross.



**Pet Owner Responsibility.** A panel of licensed, experienced veterinarians has developed this Guide. Pet owners should use this protocol only to treat a condition listed above and as directed by a qualified veterinary clinician. Other protocols in this Guide should be used only as directed by a qualified veterinary clinician.

**Important:** Before starting treatment, please consult product label for optimal product use and safety guidelines. To learn more about the technology, visit our website.

## NECK PAIN OR INJURY – UPPER CERVICAL ACUTE



**Post-surgery, acute injury (sports injury, i.e., tumble out of chute, run into fence), post athletic activity, Wobbler Syndrome, intervertebral disc disease (IVDD), pain from kyphosis, pain from scoliosis, pain from spondylosis, fibrocartilaginous embolism (FCE), laryngeal paralysis, neuropathy.**

1. A small (10 cm) or large (20 cm) Assisi Loop can be used to treat the upper cervical (neck) area in the pet depending on the size of the pet. Dachshund- and Chihuahua-sized pets do best with a small Assisi Loop. Larger breeds need the larger Loop. Positioning is extremely important for optimum effect.
2. Position the pet lying down either flat on the ground or up on their elbows.
3. Place the Assisi Loop on the side of the neck if you are confident of the location of the injury. If not confident of the location of the injury, place the Loop over the head. **See Pictures and Diagrams**
4. Placing the Loop over the head treats a larger section of the spine making it easier to position the Loop properly and be confident that you are treating the correct area.
5. Placing the Assisi Loop over the head:
  - a. Place the Assisi Loop over the head of the pet. Place the top of the Loop just behind the ear or at the back of the pet's ear; this will allow proper treatment as well as help hold the Loop in place. **See Pictures and Diagram**
  - b. If the pet is head shy, cover their eyes while placing the Loop over their head.
6. **CAUTION: Do not force the Assisi Loop over the pet's head. If it does not slip easily over the head, place the Loop against the animal's head, resting on top of the ears and nose. Forcing the animal's head through the coil can be traumatic to the pet and may overly stress the connection of the coil to the circuit board inside the Loop case.**
7. The signal generator should be located in view of the person treating the pet.
8. Do not leave the pet unattended when using this placement as small movements can change the positioning of the Loop and the area being treated.
9. Turn the unit on by depressing the button on the front of the white rubberized signal generator; green lights will illuminate about once per second. If the light is blinking 2-3 times per second, the battery is running low and a new Assisi Loop should be purchased.

10. Keep the unit in place for the full 15 minutes until the unit shuts off.
11. Use the unit 4 times daily, if possible, for 3-5 days. Treat twice daily for an additional 5 days or until pain is completely resolved.
12. There should be a minimum of 2 hours between treatments for optimum battery efficiency.
13. If Prednisone is administered and tapered, the Assisi Loop can be tapered after the Prednisone is discontinued.

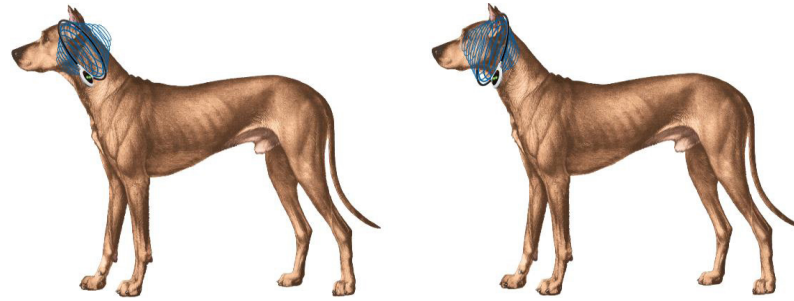


**Pet Owner Responsibility.** A panel of licensed, experienced veterinarians has developed this Guide. Pet owners should use this protocol only to treat a condition listed above and as directed by a qualified veterinary clinician. Other protocols in this Guide should be used only as directed by a qualified veterinary clinician.

**Important:** Before starting treatment, please consult product label for optimal product use and safety guidelines. To learn more about the technology, visit our website.



## NECK PAIN OR INJURY – UPPER CERVICAL CHRONIC



**Older sports injury, intervertebral disc disease (IVDD), Wobbler Syndrome, pain from spondylosis, pain from kyphosis, pain from scoliosis, degenerative spinal changes, fibrocartilaginous embolism (FCE), osteoarthritis, neuropathy.**

1. A small (10 cm) or large (20 cm) Assisi Loop can be used to treat the upper cervical (neck) area in the pet depending on the size of the pet. Dachshund- and Chihuahua-sized pets do best with a small Assisi Loop. Larger breeds need the larger Loop. Positioning is extremely important for optimum effect.
2. Position the pet lying down either flat on the ground or up on their elbows.
3. Place the Assisi Loop on the side of the neck if you are confident of the location of the injury. If not confident of the location of the injury, place the Loop over the head. **See Picture and Diagrams**
4. Placing the Loop over the head treats a larger section of the spine making it easier to position the Loop properly and be confident that you are treating the correct area.
5. Placing the Assisi Loop over the head:
  - a. Place the Assisi Loop over the head of the pet. Place the top of the Loop just behind the ear or at the back of the pet's ear; this will allow proper treatment as well as help hold the Loop in place. **See Pictures and Diagram**
  - b. If the pet is head shy, cover their eyes while placing the Loop over the head.
6. **CAUTION: Do not force the Assisi Loop over the pet's head. If it does not slip easily over the head, place the Loop against the animal's head, resting on top of the ears and nose. Forcing the animal's head through the coil can be traumatic to the pet and may overly stress the connection of the coil to the circuit board inside the Loop case.**
7. The signal generator should be located in view of the person treating the pet.
8. Do not leave the pet unattended when using this placement as small movements can change the positioning of the Loop and the area being treated.
9. Turn the unit on by depressing the button on the front of the white rubberized signal generator; green lights will illuminate about once per second. If the light is blinking 2-3 times per second, the battery is running low and a new Assisi Loop should be purchased.

10. Keep the unit in place for the full 15 minutes until the unit shuts off.
11. Use the Assisi Loop 4 times daily, if possible, for 10 days or until there is improved mobility and pain is greatly decreased or eliminated. Use of the Loop can be tapered down to 1-2 times daily as the condition improves. Long-term chronic conditions may require as much as 3-6 weeks before tapering would be appropriate. If symptoms resolve and regular use of the Assisi Loop ceases, use the Assisi Loop as needed if pain starts to recur. If there is an acute injury in a neck that has chronic disease, follow the steps in "Neck Pain or Injury – Upper Cervical – Acute" until all pain is resolved.
12. There should be a minimum of 2 hours between treatments for optimum battery efficiency.
13. It is common to utilize the Assisi Loop after unusual activity when chronic neck issues exist.
14. If Prednisone is administered and tapered, the Assisi Loop can be tapered after the Prednisone is discontinued.
15. **For those treating osteoarthritis in multiple parts of the body:** If you are treating OA in multiple parts of the body, you will need to treat EACH AREA at least twice per day. We recommend:
  - Using more than one Loop so you can treat multiple areas in the same 15 minutes
  - Use the same Loop for multiple areas, being sure to wait 2 hours between treatments
  - Use the Loop Lounge for full-body treatment and the Loop to spot treat a more affected area if needed. Do not use the Loop Lounge and Loop simultaneously as the signals can cross.



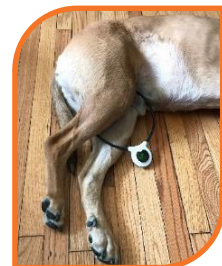
**Pet Owner Responsibility.** A panel of licensed, experienced veterinarians has developed this Guide. Pet owners should use this protocol only to treat a condition listed above and as directed by a qualified veterinary clinician. Other protocols in this Guide should be used only as directed by a qualified veterinary clinician.

**Important:** Before starting treatment, please consult product label for optimal product use and safety guidelines. To learn more about the technology, visit our website.

## POST CRUCIATE SURGERY

### ACL, CCL, torn cruciate.

1. A small (10 cm) or large (20 cm) Assisi Loop can be used to treat the knee area of the pet depending on the positioning of the Loop and size of the pet. A small Assisi Loop can be used for up to Beagle sized pets when treating the pet from inside or outside of the knee. Larger pets need the larger Loop for this positioning. Positioning is extremely important for optimum effect. **See Pictures**
2. The Assisi Loop can be placed on the outside of the knee if treating one knee. **See Picture**
3. If treating both knees, then the pet should be lying on their side with their knees pulled down and back so both are positioned below the abdominal cavity. Place the Loop between the knees so as to treat them simultaneously. **See Picture**
4. The signal generator can be positioned to balance and stabilize the unit during treatment.
5. The signal generator should be located in view of the person treating the pet.
6. Do not leave the pet unattended when using this placement as small movements can change the positioning of the Loop and the area being treated.
7. Turn the unit on by depressing the button on the front of the white rubberized signal generator; green lights will illuminate about once per second. If the light is blinking 2-3 times per second, the battery is running low and a new Assisi Loop should be purchased.
8. Keep the unit in place for the full 15 minutes until the unit shuts off.
9. Use the unit 3 times daily for 5-10 days or until pain is completely resolved. Then use as needed.
10. It is common to utilize the Assisi Loop after long walks or unusual activity when chronic knee issues exist.
11. There should be a minimum of 2 hours between treatments for optimum battery efficiency.

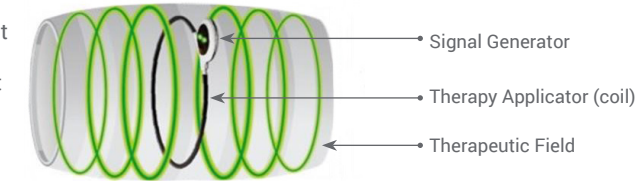


**Pet Owner Responsibility.** A panel of licensed, experienced veterinarians has developed this Guide. Pet owners should use this protocol only to treat a condition listed above and as directed by a qualified veterinary clinician. Other protocols in this Guide should be used only as directed by a qualified veterinary clinician.

**Important:** Before starting treatment, please consult product label for optimal product use and safety guidelines. To learn more about the technology, visit our website.

## POST-OPERATIVE SURGERY INCISIONS

Treatment depth is about 2/3 the diameter of the applicator, extending out on either side.



### Seromas, incisions.

1. A small (10 cm) or large (20 cm) Assisi Loop can be used to treat the surgical area of the pet depending on the positioning of the Loop and size of the incision. A small Assisi Loop can be used for up to four inch sized incisions when treating the pet. Larger incisions need the larger Loop for adequate coverage. Positioning is important for optimum effect.
2. If the goal is to treat an incision over a joint on the lower limb, and it would benefit the pet to have a joint treated on the opposite limb as well, this can be done at the same time. For example, if one knee had cruciate surgery and it makes sense to treat both knees to decrease the chance of injuring the other knee, then both knees could be treated at the same time by having the Assisi Loop placed between the knees for each 15-minute treatment. This could also be done to treat both hocks, elbows, and wrist/carpal joints. The best way to position the Loop would be to have the pet lie on their side and place the Loop between the knees, or other joints, so as to treat them simultaneously.
3. If the incision is along the spine, abdomen, or chest, the Assisi Loop can be placed above or on top of the incision or seroma with the device centered over the affected area. If the incision is on the neck or trunk and size-appropriate, the neck or body can go through the Loop.
4. Please supervise your pet when using the Assisi Loop and remove the Loop immediately after the therapy session has ended.
5. In case the incision is bandaged or wrapped, you can still use the Loop over the bandage or cast. If a splint is used, ensure that it is not metal. Metal can distract the signal.
6. The signal generator can be positioned to balance and stabilize the unit during treatment.
7. The signal generator should be located in view of the person treating the pet.
8. Do not leave the pet unattended when using this placement as small movements can change the positioning of the Loop and the area being treated.
9. Turn the unit on by depressing the button on the front of the white rubberized signal generator; green lights will illuminate about once per second. If the light is blinking 2-3 times per second, the battery is running low and a new Assisi Loop should be purchased.
10. Keep the unit in place for the full 15 minutes until the unit shuts off.

## POST-OPERATIVE SURGERY INCISIONS - CONTINUED

11. Use the unit 3-4 times daily, if possible, for 5-10 days or until pain is completely resolved.
12. There should be a minimum of 2 hours between treatments for optimum battery efficiency.

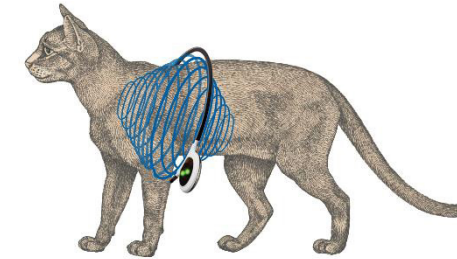
---

**Pet Owner Responsibility.** A panel of licensed, experienced veterinarians has developed this Guide. Pet owners should use this protocol only to treat a condition listed above and as directed by a qualified veterinary clinician. Other protocols in this Guide should be used only as directed by a qualified veterinary clinician.

**Important:** Before starting treatment, please consult product label for optimal product use and safety guidelines. To learn more about the technology, visit our website.

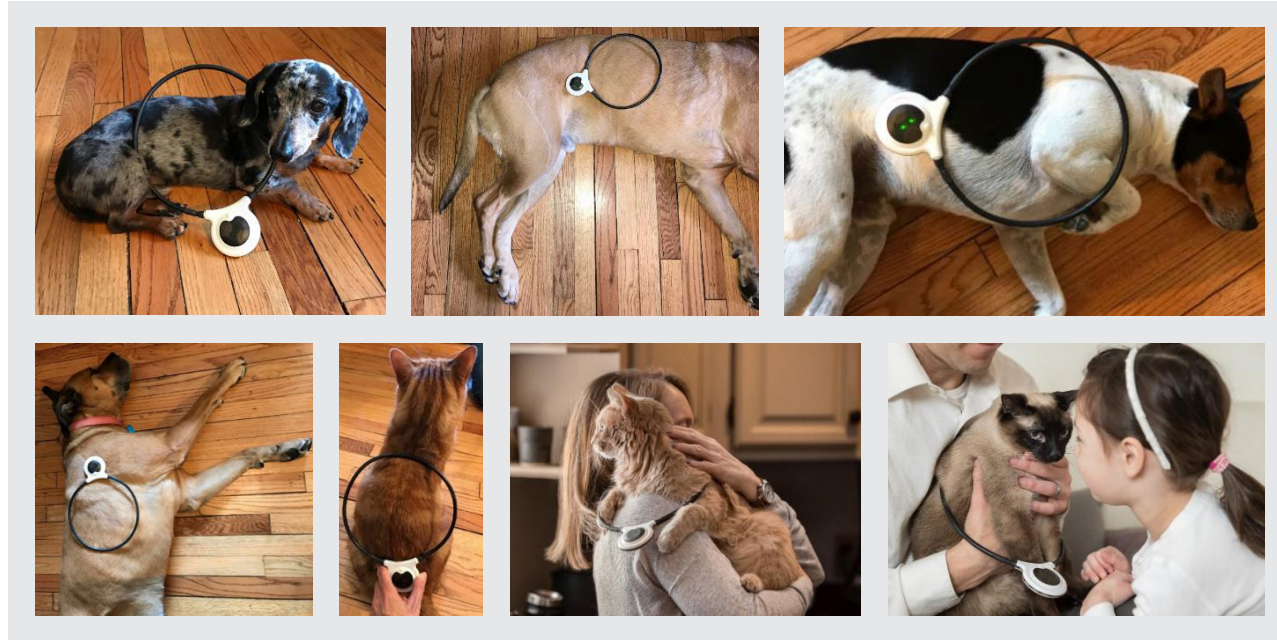
---

## PULMONARY FIBROSIS



1. A large (20 cm) Assisi Loop should be used to treat the chest of the pet.
2. Position the pet lying down either flat on the ground, up on their elbows, sitting, or being held.
3. If the pet is small enough, the Assisi Loop can be placed around the chest of the pet.
4. Placing the Assisi Loop over the head:
  - a. Place the Assisi Loop over the head of the pet with the signal generator toward the ground. Place the top of the Loop at the deepest part of the chest, this will allow proper treatment as well as help hold the Loop in place. **See Picture and Diagram**
  - b. If the pet is head shy, cover their eyes while placing the Loop over their head.
  - c. **CAUTION: Do not force the pet's shoulders, haunches, or torso through the coil. If they do not slip easily through the coil, place the coil flat against, over, or under animal's torso, as shown in the related images. Forcing the animal through the coil can be traumatic to the pet and may overly stress the connection of the coil to the circuit board inside the Loop case.**
5. Medium- to large-sized pets – If the pet is too large for the above placement, the Assisi Loop can be placed on the side of the chest over the area that is to be treated. **See Pictures**
6. Giant or wide-breed dogs (Rottweilers, Mastiffs, Newfoundlands, . . .) – Two Assisi Loops can be used simultaneously to treat both sides when dog's chest exceeds 10" wide.. One Assisi Loop can be used on the two sides consecutively, but there should be 2 hours in between sessions for optimum battery efficiency.
7. The signal generator should be located in view of the person treating the pet.
8. Do not leave the pet unattended when using this placement as small movements can change the positioning of the Loop and the area being treated.
9. Turn the unit on by depressing the button on the front of the white rubberized signal generator; green lights will illuminate about once per second. If the light is blinking 2-3 times per second, the battery is running low and a new Assisi Loop should be purchased.
10. Keep the unit in place for the full 15 minutes until the unit shuts off.
11. In cases of respiratory distress, use the unit every 2 hours until clinical signs have resolved. Treat twice daily for an additional 5 days. Then use as needed.
12. There should be a minimum of 2 hours between treatments for optimum battery efficiency.

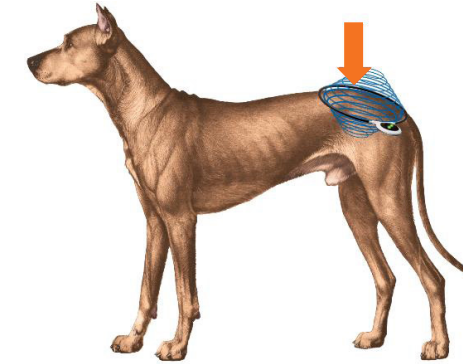
## PULMONARY FIBROSIS - CONTINUED



**Pet Owner Responsibility.** A panel of licensed, experienced veterinarians has developed this Guide. Pet owners should use this protocol only to treat a condition listed above and as directed by a qualified veterinary clinician. Other protocols in this Guide should be used only as directed by a qualified veterinary clinician.

**Important:** Before starting treatment, please consult product label for optimal product use and safety guidelines. To learn more about the technology, visit our website.

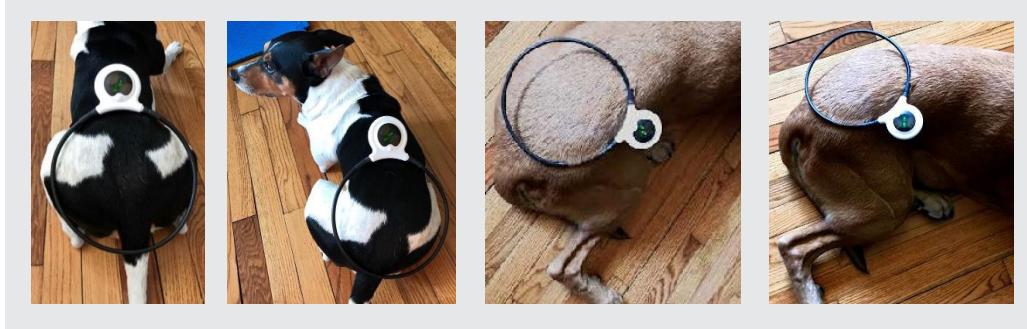
## SACROILIAC (SI) PAIN OR INJURY ACUTE



**Pain on pressure over the sacrum when standing or when the hip is extended and the sacrum is stabilized.**

1. A small (10 cm) or large (20 cm) Assisi Loop can be used to treat the sacroiliac area of the pet depending on the size of the pet. The small Assisi Loop can be used for up to Beagle-sized pets when treating just one SI joint. The larger Assisi Loop can be used to treat both SI joints simultaneously on small pets when positioned correctly. Dogs larger than a Beagle should use a large Assisi Loop. With a large Assisi Loop, both SI joints can be treated simultaneously. Positioning is extremely important for optimum effect. **See Pictures and Diagram**
2. Position the pet lying down either flat on the ground or up on their elbows.
3. When treating **one SI joint** at a time, place the Assisi Loop so that the wing of the Ilium is in the center of the Loop. **See Pictures**
4. To treat **both SI joints** simultaneously, place the Assisi Loop around the pelvis so that the Loop is positioned over both wings of the ilium, the **highest points of the pelvis** (arrow). **See Pictures and Diagram**
5. Maintain the Loop position with the center of the Assisi Loop over the sacroiliac joint(s). **See Pictures**
6. The signal generator can be positioned to help balance and stabilize the unit during treatment.
7. The signal generator should be located in view of the person treating the pet.
8. Do not leave the pet unattended when using this placement as small movements can change the positioning of the Loop and the area being treated.
9. Turn the unit on by depressing the button on the front of the white rubberized signal generator; green lights will illuminate about once per second. If the light is blinking 2-3 times per second, the battery is running low and a new Assisi Loop should be purchased.
10. Keep the unit in place for the full 15 minutes until the unit shuts off.
11. Use the unit 4 times daily, if possible, for 5 days. Treat twice daily for an additional 5 days or until pain is completely resolved.
12. There should be a minimum of 2 hours between treatments for optimum battery efficiency.

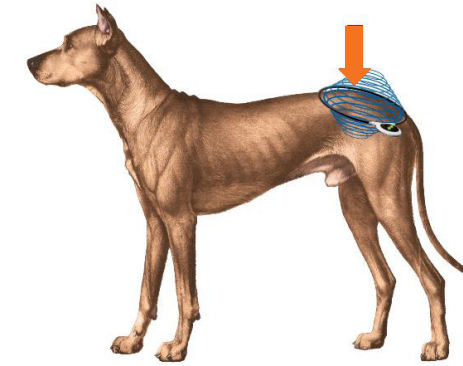
## SACROILIAC (SI) PAIN OR INJURY ACUTE - CONTINUED



**Pet Owner Responsibility.** A panel of licensed, experienced veterinarians has developed this Guide. Pet owners should use this protocol only to treat a condition listed above and as directed by a qualified veterinary clinician. Other protocols in this Guide should be used only as directed by a qualified veterinary clinician.

**Important:** Before starting treatment, please consult product label for optimal product use and safety guidelines. To learn more about the technology, visit our website.

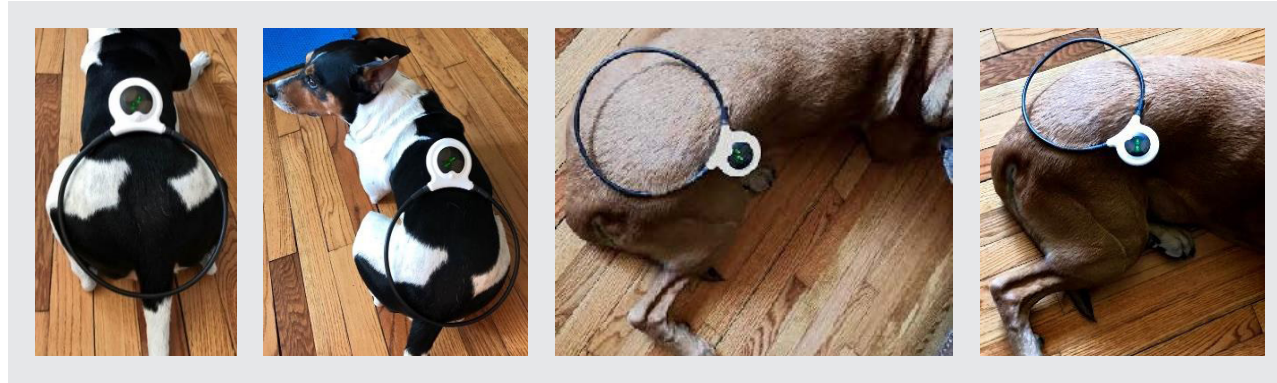
## SACROILIAC (SI) PAIN OR INJURY CHRONIC



**Pain on pressure over the sacrum when standing or when the hip is extended and the sacrum is stabilized.**

1. A small (10 cm) or large (20 cm) Assisi Loop can be used to treat the Sacroiliac area of the pet depending on the size of the pet. The small Assisi Loop can be used for up to Beagle-sized pets when treating just one SI joint. The larger Assisi Loop can be used to treat both SI joints simultaneously on small pets when positioned correctly. Dogs larger than a Beagle should use a large Assisi Loop. With a large Assisi Loop, both SI joints can be treated simultaneously. Positioning is extremely important for optimum effect. **See Pictures and Diagram**
2. Position the pet lying down either flat on the ground or up on their elbows.
3. When treating **one SI joint** at a time, place the Assisi Loop so that the wing of the Ilium is in the center of the Loop. **See Pictures**
4. To treat **both SI joints** simultaneously, place the Loop around the pelvis so that the Loop is positioned over both wings of the ilium, **the highest points of the pelvis**. **See Picture and Diagram**
5. Maintain the Loop position with the center of the Assisi Loop over the sacroiliac joints. **See Pictures**
6. The signal generator can be positioned to help balance and stabilize the unit during treatment.
7. The signal generator should be located in view of the person treating the pet.
8. Do not leave the pet unattended when using this placement as small movements can change the positioning of the Loop and the area being treated.
9. Turn the unit on by depressing the button on the front of the white rubberized signal generator; green lights will illuminate about once per second. If the light is blinking 2-3 times per second, the battery is running low and a new Assisi Loop should be purchased.
10. Keep the unit in place for the full 15 minutes until the unit shuts off.
11. Use the unit twice daily for 5-10 days or until pain is completely resolved. Then use as needed.
12. There should be a minimum of 2 hours between treatments for optimum battery efficiency.
13. It is common to utilize the Assisi Loop after long walks or unusual activity when chronic SI issues exist.

## SACROILIAC (SI) PAIN OR INJURY CHRONIC - CONTINUED

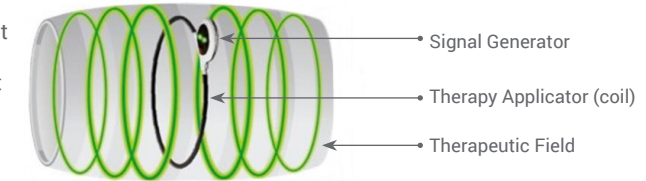


**Pet Owner Responsibility.** A panel of licensed, experienced veterinarians has developed this Guide. Pet owners should use this protocol only to treat a condition listed above and as directed by a qualified veterinary clinician. Other protocols in this Guide should be used only as directed by a qualified veterinary clinician.

**Important:** Before starting treatment, please consult product label for optimal product use and safety guidelines. To learn more about the technology, visit our website.

## SEVERE PAIN RELATED TO ARTHRITIS

Treatment depth is about 2/3 the diameter of the applicator, extending out on either side.

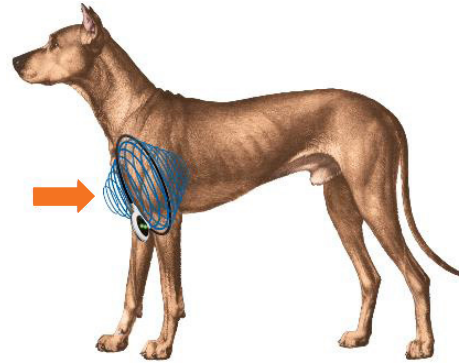


1. Locate the joint that is affected in the Table of Contents and follow the guidelines.
2. Use the Assisi Loop 4 times daily, if possible, for 10 days or until there is improved mobility and pain is greatly decreased or eliminated. Use of the Loop can be tapered down to 1-2 times daily as the condition improves. Long-term chronic conditions may require as much as 3-6 weeks before tapering would be appropriate. If symptoms resolve and regular use of the Assisi Loop ceases, use the Assisi Loop as needed if pain starts to recur.
3. There should be a minimum of 2 hours between treatments for optimum effect.
4. **For those treating osteoarthritis in multiple parts of the body:** If you are treating OA in multiple parts of the body, you will need to treat EACH AREA at least twice per day. We recommend:
  - Using more than one Loop so you can treat multiple areas in the same 15 minutes
  - Use the same Loop for multiple areas, being sure to wait 2 hours between treatments
  - Use the Loop Lounge for full-body treatment and the Loop to spot treat a more affected area if needed. Do not use the Loop Lounge and Loop simultaneously as the signals can cross.

**Pet Owner Responsibility.** A panel of licensed, experienced veterinarians has developed this Guide. Pet owners should use this protocol only to treat a condition listed above and as directed by a qualified veterinary clinician. Other protocols in this Guide should be used only as directed by a qualified veterinary clinician.

**Important:** Before starting treatment, please consult product label for optimal product use and safety guidelines. To learn more about the technology, visit our website.

SHOULDER PAIN ACUTE



**Post-surgery, acute injury (sports injury), medial shoulder instability, acute on chronic osteoarthritis, osteochondrosis (OC), osteochondrosis dissecans (OCD), supraspinatus tendinopathy, biceps brachii tendinopathy, biceps brachii tendon tear or avulsion fracture, post athletic activity.**

1. A small (10 cm) or large (20 cm) Assisi Loop can be used to treat the shoulder joint in any size pet as long as it is positioned correctly. Positioning is extremely important for optimum effect.
2. Position the pet lying down, preferably flat on the ground or up on their elbows.
3. Identify the **"point of the shoulder"**. See Arrow on Diagram
4. Place the center of the Assisi Loop over the point of the shoulder. See Pictures
5. The signal generator can be positioned to help balance and stabilize the unit during treatment.
6. The signal generator should be located in view of the person treating the pet.
7. Do not leave the pet unattended when using this placement as small movements can change the positioning of the Loop and the area being treated.
8. Turn the unit on by depressing the button on the front of the white rubberized signal generator; green lights will illuminate about once per second. If the light is blinking 2-3 times per second, the battery is running low and a new Assisi Loop should be purchased.
9. Keep the unit in place for the full 15 minutes until the unit shuts off.
10. Use the unit 4 times daily, if possible, for 3-5 days. Treat twice daily for an additional 5 days or until pain is completely resolved.
11. There should be a minimum of 2 hours between treatments for optimum battery efficiency.

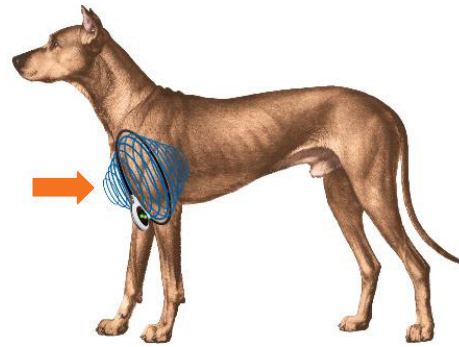
12. **For those treating osteoarthritis in multiple parts of the body:** If you are treating OA in multiple parts of the body, you will need to treat EACH AREA at least twice per day. We recommend:
  - Using more than one Loop so you can treat multiple areas in the same 15 minutes
  - Use the same Loop for multiple areas, being sure to wait 2 hours between treatments
  - Use the Loop Lounge for full-body treatment and the Loop to spot treat a more affected area if needed. Do not use the Loop Lounge and Loop simultaneously as the signals can cross.



**Pet Owner Responsibility.** A panel of licensed, experienced veterinarians has developed this Guide. Pet owners should use this protocol only to treat a condition listed above and as directed by a qualified veterinary clinician. Other protocols in this Guide should be used only as directed by a qualified veterinary clinician.

**Important:** Before starting treatment, please consult product label for optimal product use and safety guidelines. To learn more about the technology, visit our website.

## SHOULDER PAIN CHRONIC



**Older sports injury, medial shoulder instability, osteochondrosis (OC), osteochondrosis dissecans (OCD), supraspinatus tendinopathy, biceps brachii tendinopathy, biceps brachii tendon tear or avulsion fracture, osteoarthritis.**

1. A small (10 cm) or large (20 cm) Assisi Loop can be used to treat the shoulder joint in any size pet as long as it is positioned correctly. Positioning is extremely important for optimum effect.
2. Position the pet lying down, preferably flat on the ground or up on their elbows.
3. Identify the **“point of the shoulder”**. See Arrow on the Diagram
4. Place the center of the Assisi Loop over the point of the shoulder. See Pictures
5. The signal generator can be positioned to help balance and stabilize the unit during treatment.
6. The signal generator should be located in view of the person treating the pet.
7. Do not leave the pet unattended when using this placement as small movements can change the positioning of the Loop and the area being treated.
8. Turn the unit on by depressing the button on the front of the white rubberized signal generator; green lights will illuminate about once per second. If the light is blinking 2-3 times per second, the battery is running low and a new Assisi Loop should be purchased.
9. Keep the unit in place for the full 15 minutes until the unit shuts off.
10. Use the Assisi Loop 4 times daily, if possible, for 10 days or until there is improved mobility and pain is greatly decreased or eliminated. Use of the Loop can be tapered down to 1-2 times daily as the condition improves. Long-term chronic conditions may require as much as 3-6 weeks before tapering would be appropriate. If symptoms resolve and regular use of the Assisi Loop ceases, use the Assisi Loop as needed if pain starts to recur. If there is an acute injury in a shoulder that has chronic disease, follow the steps in “Shoulder Pain or Injury – Acute” until all pain is resolved.
11. It is common to utilize the Assisi Loop after unusual activity when chronic shoulder issues exist.
12. There should be a minimum of 2 hours between treatments for optimum battery efficiency.

13. **For those treating osteoarthritis in multiple parts of the body:** If you are treating OA in multiple parts of the body, you will need to treat EACH AREA at least twice per day. We recommend:
  - Using more than one Loop so you can treat multiple areas in the same 15 minutes
  - Use the same Loop for multiple areas, being sure to wait 2 hours between treatments
  - Use the Loop Lounge for full-body treatment and the Loop to spot treat a more affected area if needed. Do not use the Loop Lounge and Loop simultaneously as the signals can cross.

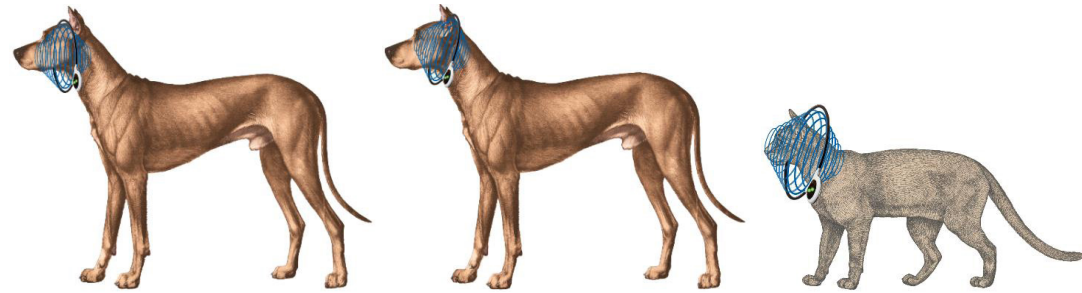


**Pet Owner Responsibility.** A panel of licensed, experienced veterinarians has developed this Guide. Pet owners should use this protocol only to treat a condition listed above and as directed by a qualified veterinary clinician. Other protocols in this Guide should be used only as directed by a qualified veterinary clinician.

**Important:** Before starting treatment, please consult product label for optimal product use and safety guidelines. To learn more about the technology, visit our website.



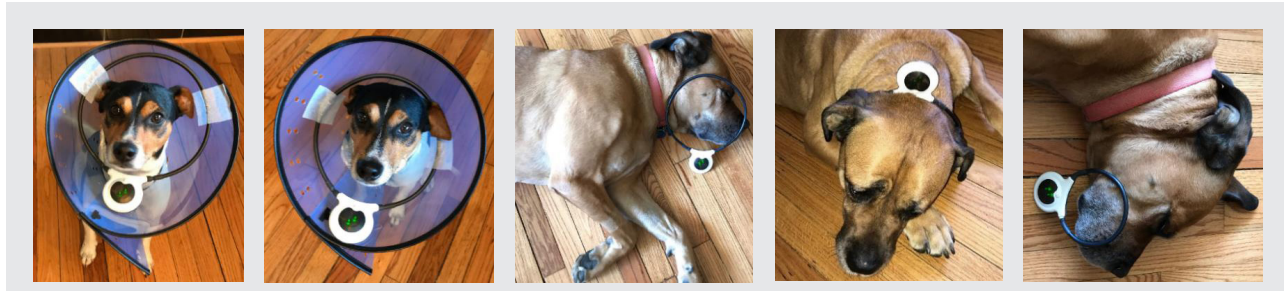
## TEETH, JAW, NOSE



**Oral ulcers, tongue sores, tongue injuries, stomatitis, craniomandibular osteopathy, post dental extraction, TMJ issues, tempo-mandibular joint pain, sinusitis, nasal inflammation, upper respiratory tract infections (URTI).**

1. Choose the Assisi DentaLoop or Assisi Loop that is larger than the area of the face to be treated if possible. Positioning is extremely important for optimum effect.
2. Position the pet lying down either flat on the ground or up on their elbows with their rear limbs out to one side.
3. Identify the extraction area or injured area and place the Assisi Loop with the center of the Loop over the center of the injured area, completely surrounding the area if possible. The DentaLoop can be positioned using the DentaLoop Bonnet. The Assisi Loop can be placed around the dog's head with the Loop held just behind the eyes or attached to an Elizabethan collar.
4. If using the DentaLOOP the coil should be positioned within 4-5 inches of the area to be treated (i.e., so that the area treated is within the treatment zone). Thus, if a large dog is being treated after molar extractions, the coil should be positioned toward the back of the mouth/jaw, with the battery case toward the front of the jaw (nose).
5. If attaching the Assisi Loop to the Elizabethan collar, position the Loop so the center of the head is in the center of the Loop. Tape the Loop in several places to keep it secure and in place for the whole treatment.
6. If the injury or sore is outside of the Loop's treatment area, then it is better to place the Loop on the side of the face. **See Diagrams and Pictures**
7. The signal generator can be positioned to help balance and stabilize the unit during treatment.
8. The signal generator should be located in view of the person treating the pet.
9. Do not leave the pet unattended when using this placement as small movements can change the positioning of the Loop and the area being treated.
10. Turn the unit on by depressing the button on the front of the white rubberized signal generator; green lights will illuminate about once per second. If the light is blinking 2-3 times per second, the battery is running low and a new Assisi Loop should be purchased.

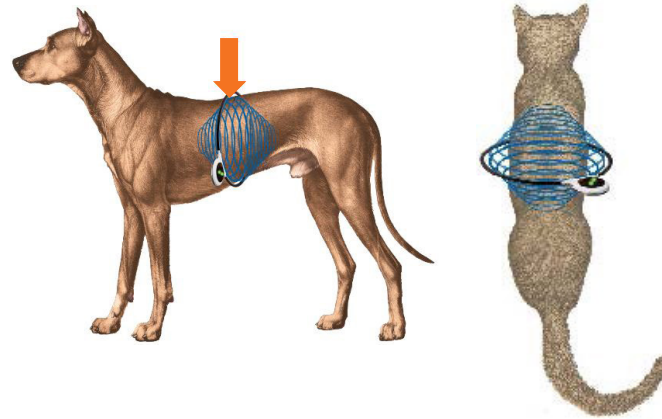
11. Keep the unit in place for the full 15 minutes until the unit shuts off.
12. Treat the area 4 times daily, if possible, for dental extractions and twice daily for other mouth indications. Begin treatment 2-3 days prior to dental extractions when possible. Treat for a minimum of 2 days until inflammation and pain has resolved.
13. There should be a minimum of 2 hours between treatments for optimum battery efficiency.



**Pet Owner Responsibility.** A panel of licensed, experienced veterinarians has developed this Guide. Pet owners should use this protocol only to treat a condition listed above and as directed by a qualified veterinary clinician. Other protocols in this Guide should be used only as directed by a qualified veterinary clinician.

**Important:** Before starting treatment, please consult product label for optimal product use and safety guidelines. To learn more about the technology, visit our website.

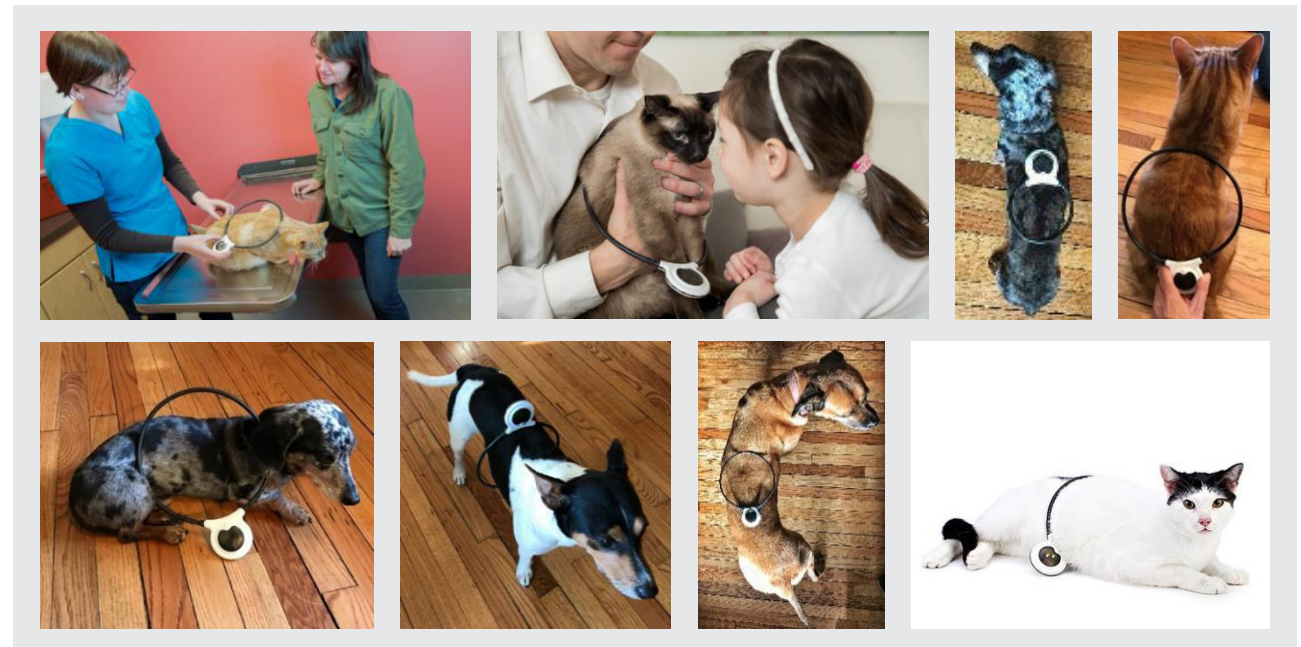
## THORACOLUMBAR DISEASE, PAIN OR INJURY ACUTE



Intervertebral disc disease (IVDD), back pain, blown disc, hemilaminectomy, pain from spondylosis, pain from kyphosis, pain from scoliosis, neuropathy, diffuse idiopathic skeletal hyperostosis, fibrocartilaginous embolism (FCE).

1. A small (10 cm) or large (20 cm) Assisi Loop can be used to treat the thoracolumbar (middle of the back) area in the pet depending on the size of the pet. Dachshund- and Chihuahua-sized pets can use a small Assisi Loop. Large-breed dogs need the larger Loop. Positioning is extremely important for optimum effect.
2. Position the pet lying down either flat on the ground or up on their elbows.
3. The thoracolumbar area can be felt by feeling the end of the ribs, following them up to the **thoracolumbar junction** (arrow) and placing the center of the large Assisi Loop at that point. **See Pictures and Diagrams**
4. The Loop can also be placed around the patient if the size of the patient and the size of the Assisi Loop are appropriate for this positioning to be utilized. This type of positioning allows the largest area of the spine to be treated and should be utilized if possible. To place the Loop around the thoracolumbar area of the pet, it is usually easier to place the Assisi Loop around the rear feet and slide it up over the hips, making sure the tail goes through the Loop as it is being slid up the rear limbs. The Assisi Loop is slid to the area where the end of the ribs is felt along the back. **See Pictures and Diagrams**
5. **CAUTION: Do not force the pet's shoulders, haunches, or torso through the coil. If they do not slip easily through the coil, place the coil flat against, over, or under animal's torso, as shown in the related images. Forcing the animal through the coil can be traumatic to the pet and may overly stress the connection of the coil to the circuit board inside the Loop case.**
6. The signal generator can be positioned to help balance and stabilize the unit during treatment.
7. The signal generator should be located in view of the person treating the pet.

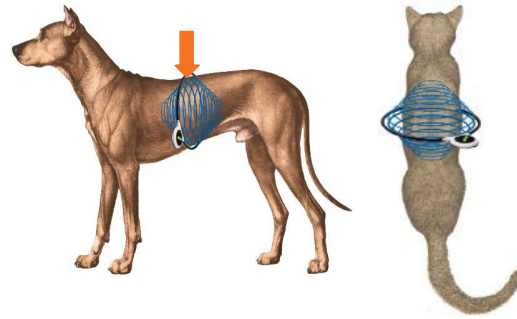
8. Do not leave the pet unattended when using this placement as small movements can change the positioning of the Loop and the area being treated.
9. Turn the unit on by depressing the button on the front of the white rubberized signal generator; green lights will illuminate about once per second. If the light is blinking 2-3 times per second, the battery is running low and a new Assisi Loop should be purchased.
10. Keep the unit in place for the full 15 minutes until the unit shuts off.
11. Use the unit 4 times daily, if possible, for 5 days. Treat twice daily for an additional 5 days or until pain is completely resolved.
12. There should be a minimum of 2 hours between treatments for optimum battery efficiency.
13. If Prednisone is administered and tapered, the Assisi Loop can be tapered after the Prednisone is discontinued.
14. Thoracolumbar disease can be a lifelong condition where significant activity creates inflammation. Many patients benefit significantly from having once-daily treatments after the clinical signs have resolved to prevent recurrences.



**Pet Owner Responsibility.** A panel of licensed, experienced veterinarians has developed this Guide. Pet owners should use this protocol only to treat a condition listed above and as directed by a qualified veterinary clinician. Other protocols in this Guide should be used only as directed by a qualified veterinary clinician.

**Important:** Before starting treatment, please consult product label for optimal product use and safety guidelines. To learn more about the technology, visit our website.

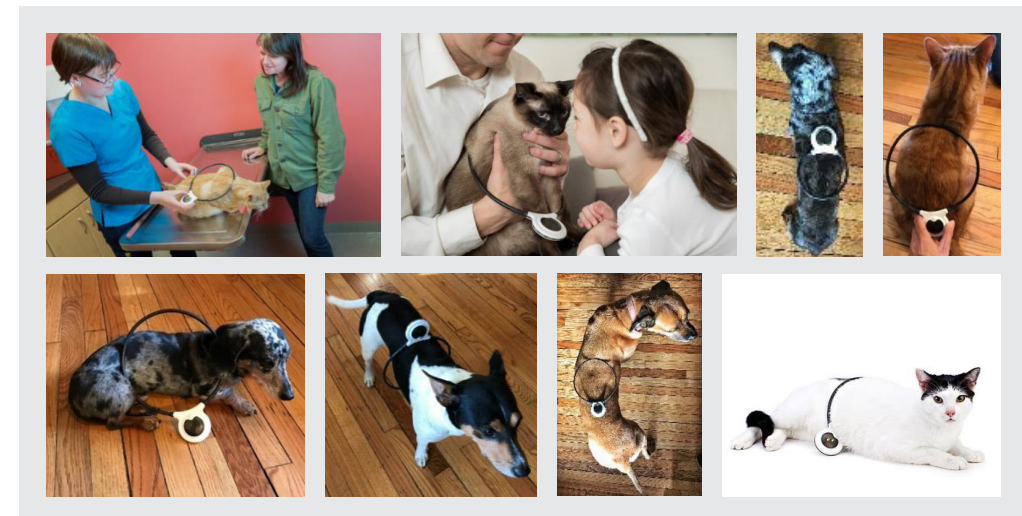
## THORACOLUMBAR DISEASE, PAIN OR INJURY CHRONIC



**Intervertebral disc disease (IVDD), back pain, blown disc, hemilaminectomy, pain from spondylosis, pain from kyphosis, pain from scoliosis, neuropathy, diffuse idiopathic skeletal hyperostosis, degenerative spinal changes, osteoarthritis, fibrocartilaginous embolism (FCE).**

1. A small (10 cm) or large (20 cm) Assisi Loop can be used to treat the thoracolumbar (middle of the back) area in the pet depending on the size of the pet. Dachshund- and Chihuahua-sized pets can use a small Assisi Loops. Large-breed dogs need the larger Loop. Positioning is extremely important for optimum effect.
2. Position the pet lying down either flat on the ground or up on their elbows.
3. The thoracolumbar area can be felt by feeling the end of the ribs, following them up to the **thoracolumbar junction** (arrow) and placing the center of the large Assisi Loop at that point. **See Pictures and Diagrams**
4. The Loop can also be placed around the patient if the size of the patient and the size of the Assisi Loop are appropriate for this positioning to be utilized. This type of positioning allows the largest area of the spine to be treated and should be utilized if possible. To place the Loop around the thoracolumbar area of the pet, it is usually easier to place the Assisi Loop around the rear feet and slide it up over the hips, making sure the tail goes through the Loop as it is being slid up the rear limbs. The Assisi Loop is slid to the area where the end of the ribs is felt along the back. **See Pictures and Diagrams**
5. **CAUTION: Do not force the pet's shoulders, haunches, or torso through the coil. If they do not slip easily through the coil, place the coil flat against, over, or under animal's torso, as shown in the related images. Forcing the animal through the coil can be traumatic to the pet and may overly stress the connection of the coil to the circuit board inside the Loop case.**
6. The signal generator can be positioned to help balance and stabilize the unit during treatment.
7. The signal generator should be located in view of the person treating the pet.
8. Do not leave the pet unattended when using this placement as small movements can change the positioning of the Loop and the area being treated.
9. Turn the unit on by depressing the button on the front of the white rubberized signal generator; green lights will illuminate about once per second. If the light is blinking 2-3 times per second, the battery is running low and a new Assisi Loop should be purchased.

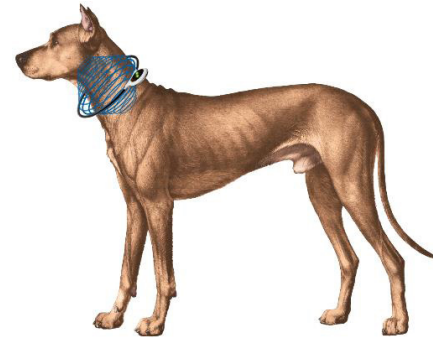
10. Keep the unit in place for the full 15 minutes until the unit shuts off.
11. Use the Assisi Loop 4 times daily, if possible, for 10 days or until there is improved mobility and pain is greatly decreased or eliminated. Use of the Loop can be tapered down to 1-2 times daily as the condition improves. Long-term chronic conditions may require as much as 3-6 weeks before tapering would be appropriate. If symptoms resolve and regular use of the Assisi Loop ceases, use the Assisi Loop as needed if pain starts to recur. If there is an acute thoracolumbar injury where chronic disease is present, follow the steps in "Thoracolumbar Pain or Injury – Acute" until all pain is resolved.
12. There should be a minimum of 2 hours between treatments for optimum battery efficiency.
13. If Prednisone is administered and tapered, the Assisi Loop can be tapered after the Prednisone is discontinued.
14. Thoracolumbar disease can be a lifelong condition where significant activity creates inflammation. Many patients benefit significantly from having once-daily treatments after the clinical signs have resolved to prevent recurrences.
15. **For those treating osteoarthritis in multiple parts of the body:** If you are treating OA in multiple parts of the body, you will need to treat EACH AREA at least twice per day. We recommend:
  - Using more than one Loop so you can treat multiple areas in the same 15 minutes
  - Use the same Loop for multiple areas, being sure to wait 2 hours between treatments
  - Use the Loop Lounge for full-body treatment and the Loop to spot treat a more affected area if needed. Do not use the Loop Lounge and Loop simultaneously as the signals can cross.



**Pet Owner Responsibility.** A panel of licensed, experienced veterinarians has developed this Guide. Pet owners should use this protocol only to treat a condition listed above and as directed by a qualified veterinary clinician. Other protocols in this Guide should be used only as directed by a qualified veterinary clinician.

**Important:** Before starting treatment, please consult product label for optimal product use and safety guidelines. To learn more about the technology, visit our website.

## TRACHEAL BRONCHITIS



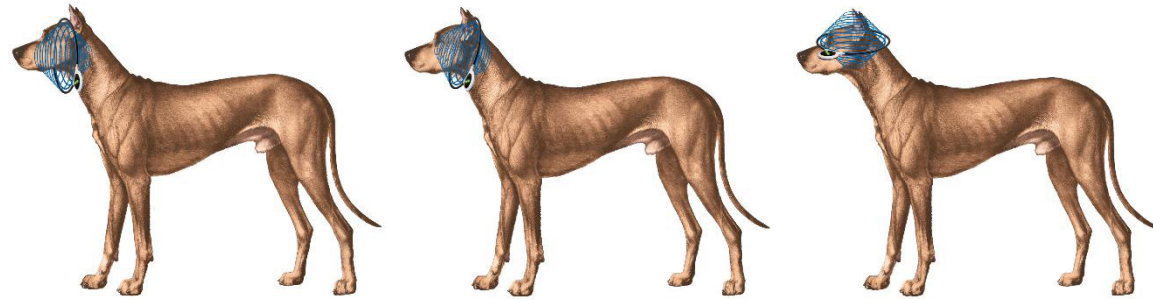
1. A small (10 cm) or large (20 cm) Assisi Loop can be used to treat tracheal bronchitis in the pet depending on the size of the pet. Dachshund- and Chihuahua-sized pets do best with a small Assisi Loop. Larger breeds need the larger Loop. Positioning is extremely important for optimum effect.
2. Position the pet lying down either flat on the ground or up on their elbows.
3. The Assisi Loop can be placed on the side of the neck or around the neck. If the Assisi Loop is on the side of the neck, the center of the Loop should be halfway between the ear and shoulder. **See Pictures**
4. Placing the Loop over the head treats a larger section of the trachea, which may make it more effective.
5. Placing the Assisi Loop over the head:
  - a. Place the Assisi Loop over the head of the pet with the signal generator toward the ground. Place the top of the Loop halfway between the ear and shoulder. **See Pictures and Diagram**
  - b. If the pet is head shy, cover their eyes while placing the Loop over their head.
  - c. The Assisi Loop can be held in place halfway down the length of the neck for the entire treatment time.
6. The signal generator should be located in view of the person treating the pet.
7. Do not leave the pet unattended when using this placement as small movements can change the positioning of the Loop and the area being treated.
8. Turn the unit on by depressing the button on the front of the white rubberized signal generator; green lights will illuminate about once per second. If the light is blinking 2-3 times per second, the battery is running low and a new Assisi Loop should be purchased.
9. Keep the unit in place for the full 15 minutes until the unit shuts off.
10. Use the unit 4 times daily, if possible, until clinical signs have resolved. Treat twice daily for an additional 3-5 days. After this, use 1-4 times daily to control inflammation for ease of breathing.
11. There should be a minimum of 2 hours between treatments for optimum battery efficiency.



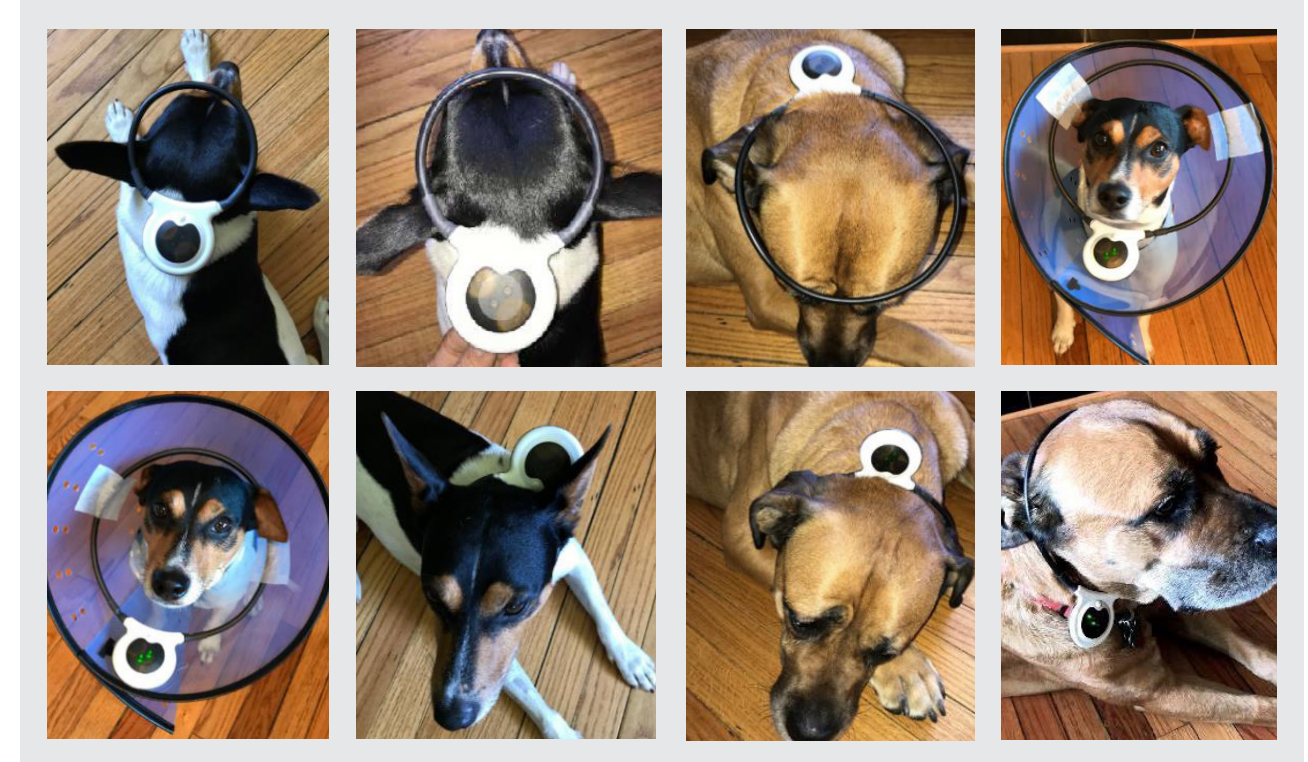
**Pet Owner Responsibility.** A panel of licensed, experienced veterinarians has developed this Guide. Pet owners should use this protocol only to treat a condition listed above and as directed by a qualified veterinary clinician. Other protocols in this Guide should be used only as directed by a qualified veterinary clinician.

**Important:** Before starting treatment, please consult product label for optimal product use and safety guidelines. To learn more about the technology, visit our website.

## WHITE SHAKER DOG SYNDROME



1. A small (10 cm) or large (20 cm) Assisi Loop can be used to treat the brain in the pet depending on the size of the pet. Dachshund- and Chihuahua-sized pets do best with a small Assisi Loop. Larger breeds need the larger Loop. Positioning is extremely important for optimum effect.
2. Position the pet lying down either flat on the ground, up on their elbows, or sitting.
3. The Assisi Loop can be placed on the head directly in front of the ears, behind the ears, attached to an Elizabethan collar, or placed like a halo on top of the head. **See Pictures and Diagrams**
4. Placing the Assisi Loop over the head:
  - a. Place the Assisi Loop over the head of the pet. Place the top of the Loop at the front or back of the pet's ear; this will allow proper treatment as well as help hold the Loop in place. **See Pictures and Diagrams**
  - b. If the pet is head shy, cover their eyes while placing the Loop over their head.
5. When placing the Assisi Loop as a halo, the Loop may need to be held in place to prevent slipping.
6. When attaching the Assisi Loop to the Elizabethan collar, position the Loop so the center head is in the center of the Loop, being careful not to bend the Loop.. Tape the Loop in several places to keep it secure and in place for the whole treatment.
7. The signal generator should be located in view of the person treating the pet.
8. Do not leave the pet unattended when using this placement as small movements can change the positioning of the Loop and the area being treated.
9. Turn the unit on by depressing the button on the front of the white rubberized signal generator; green lights will illuminate about once per second. If the light is blinking 2-3 times per second, the battery is running low and a new Assisi Loop should be purchased.
10. Keep the unit in place for the full 15 minutes until the unit shuts off.
11. Use the unit 4 times daily, if possible, for 3-5 days or until pain and inflammation is gone.
12. There should be a minimum of 2 hours between treatments for optimum battery efficiency.

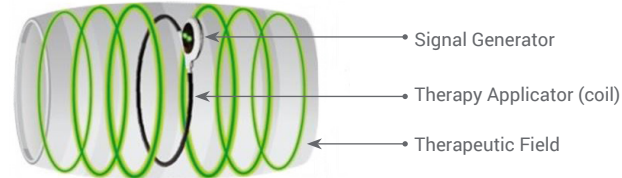


**Pet Owner Responsibility.** A panel of licensed, experienced veterinarians has developed this Guide. Pet owners should use this protocol only to treat a condition listed above and as directed by a qualified veterinary clinician. Other protocols in this Guide should be used only as directed by a qualified veterinary clinician.

**Important:** Before starting treatment, please consult product label for optimal product use and safety guidelines. To learn more about the technology, visit our website.

## WOUNDS

Treatment depth is about 2/3 the diameter of the applicator, extending out on either side.



**Skin wounds, hit by car, skin tear, cuts, gashes, sores, abrasions, lacerations, hot spots, ulcers, shark tail abrasion, snake bites, spider bites, other bites, puncture wounds, pododermatitis, abscesses.**

1. Choose an Assisi Loop that is larger than the wound to be treated if possible.
2. Positioning is extremely important for optimum effect.
3. If the wound is larger than the Assisi Loop, it will take multiple sessions to treat the entire wound.
4. Position the pet lying down either flat on the ground or up on their elbows with their rear limbs out to one side with the wound visible and accessible.
5. Identify the wound site and place the Assisi Loop with the center of the Loop over the center of the wound site, completely surrounding the wound if possible.
6. The signal generator can be positioned to help balance and stabilize the unit during treatment.
7. The signal generator should be located in view of the person treating the pet.
8. Do not leave the pet unattended when using this placement as small movements can change the positioning of the Loop and the area being treated.
9. Turn the unit on by depressing the button on the front of the white rubberized signal generator; green lights will illuminate about once per second. If the light is blinking 2-3 times per second, the battery is running low and a new Assisi Loop should be purchased.
10. Keep the unit in place for the full 15 minutes until the unit shuts off.
11. Use the unit 2-4 times daily until healed to speed healing of the skin and tissue below it.
12. There should be a minimum of 2 hours between treatments for optimum battery efficiency.

**Pet Owner Responsibility.** A panel of licensed, experienced veterinarians has developed this Guide. Pet owners should use this protocol only to treat a condition listed above and as directed by a qualified veterinary clinician. Other protocols in this Guide should be used only as directed by a qualified veterinary clinician.

**Important:** Before starting treatment, please consult product label for optimal product use and safety guidelines. To learn more about the technology, visit our website.

## Clinical Trials: Research Supporting Assisi tPEMF Solutions

In a Grade V intervertebral disk disease (IVDD) trial conducted at NCSU (Zidan with Olby, Journal of Neurotrauma, 2018<sup>1</sup>), the PEMF technology in the Assisi LOOP devices demonstrated:

- **Significant difference in incisional pain between PEMF treated and placebo group**
- **Lower levels of glial fibrillary acidic protein (GFAP) indicating neuroprotective qualities**
- **Statistically greater degree of recovery of proprioception**

### The Effect of Electromagnetic Fields on Postoperative Pain and Locomotor Recovery in Dogs with Acute, Severe Thoracolumbar Intervertebral Disc Extrusion: A Randomized Placebo-Controlled, Prospective Clinical Trial.

Zidan N, Fenn J, Griffith E, Early PJ, Mariani CL, Munana KR, Guevar J, Olby N.

#### ABSTRACT

Spinal cord injury (SCI) due to acute intervertebral disc extrusions (IVDE) is common in dogs and is treated by surgical decompression. Dogs with sensorimotor complete injuries have an incomplete recovery. Pulsed Electromagnetic Fields (PEMF) reduce postoperative pain through anti-inflammatory effects and there is growing evidence for neuroprotective effects.

This randomized, controlled clinical trial evaluated the effect of PEMF on post-operative pain and neurologic recovery in dogs with surgically treated sensorimotor complete SCI due to acute IVDE. Sixteen dogs with surgically treated complete thoracolumbar SCI were randomized to receive PEMF (15 minutes every 2 hours for 2 weeks then twice daily for 4 weeks) or placebo starting immediately after diagnosis. The primary outcome was gait score at 2 weeks. Secondary measures of gait, pain perception and proprioceptive function were evaluated at 2 and 6 weeks. Plasma GFAP concentration was measured as a SCI biomarker. Post-operative pain was quantified by measuring mechanical sensory thresholds (MST) at control and surgical sites. There was no significant difference in demographics or GFAP concentration between the 2 groups at trial entry. There was no difference in primary outcome or in secondary measures of gait, but proprioceptive placing was significantly better at 6 weeks and GFAP concentrations were significantly lower at 2 weeks in the PEMF group. MSTs were significantly higher in the PEMF treated group.

We conclude that PEMF reduced incision-associated pain in dogs following surgery for IVDE and may reduce extent of spinal cord injury and enhance proprioceptive placing. Larger clinical trials are warranted.

1. Zidan, N., et al. 2018. The Effect of Electromagnetic Fields on Postoperative Pain and Locomotor Recovery in Dogs with Acute, Severe Thoracolumbar Intervertebral Disc Extrusion: A Randomized Placebo-Controlled, Prospective Clinical Trial. *J Neurotrauma*, 35(15):1726-1736.

## Clinical Trials: Research Supporting Assisi tPEMF Solutions

In a post-op Hemilaminectomy Trial conducted at Animal Medical Center of New York (Alvarez, et al, Journal of the American Animal Hospital Association, March/April 2019<sup>2</sup>), the PEMF technology in the Assisi LOOP® devices has shown:

- Significant improvement in wound healing for Loop treated group compared to placebo
- Opioids were administered almost 50% less frequently in Loop treated group
- No side effects with Loop treatment

### Effect of Targeted PEMF Therapy on Canine Post-Operative Hemilaminectomy: A Double-Blind, Randomized, Placebo-Controlled Clinical Trial.

Alvarez LX, McCue J, Lam NK, Fox P, Gulce A.

#### ABSTRACT

Intervertebral disk disease (IVDD) is one of the leading causes of paralysis in dogs. Pulsed Electro-Magnetic Field Therapy (PEMF) has been advocated for improving wound healing and pain reduction, however, robust clinical trials are lacking.

The present prospective, double-blind placebo-controlled trial evaluated targeted PEMF therapy administered to 53 client owned dogs that underwent hemilaminectomy for naturally occurring disk extrusion IVDD. The dogs were randomized to receive either targeted PEMF (N=27) or sham treatment (N=28). Wound healing, evaluated by visual analog score and wound evaluation scale, was significantly improved at 6 weeks postoperatively in the treatment compared to sham group (p=0.010 and p=0.023, respectively). Pain medications were administered less frequently in dogs receiving PEMF treatment during the 7-day postoperative period compared to the sham treatment group (p= 0.010) with codeine administered 1.8 times more frequently in the sham group.

No untoward effects were recorded in either treatment group. More frequent evaluation of outcome measures with larger patient numbers, as well as histologic samples may be useful in future studies. Dogs receiving PEMF therapy following post-operative hemilaminectomy demonstrated improved wound scores at week 6 and reduced mean number of owner-administered pain medications compared to sham therapy.

2. Alvarez LX, McCue J, Lam NK, Fox P, Gulce A. 2019. Effect of Targeted Pulsed Electromagnetic Field Therapy on Canine Postoperative Hemilaminectomy: A Double-Blind, Randomized, Placebo-Controlled Clinical Trial. *J Am Anim Hosp Assoc.*, 55(2); 83-91.



Advancing animal health and veterinarian success with best-in-class therapeutics and diagnostics.

Zomedica is Expanding,  
DISCOVER WHAT'S NEW



### TRUFORMA®

The TRUFORMA in-clinic biosensor testing platform provides reference lab accuracy with point of care convenience. It offers complete control over the testing process from start to finish that allow veterinarians to make clinical decisions faster — and begin treating patients sooner.



Assisi Loop products use targeted pulsed electromagnetic field (tPEMF™) therapy to treat pain and inflammation, and canine separation anxiety. Assisi tPEMF technology is drug-free and backed by extensive research and science.

### PulseVet®

Proven effective, sedation-free healing from the leaders in high-energy shock wave technology. The PulseVet system delivers unmatched power, portability, and proven efficacy in reducing lameness, relieving pain, and increasing mobility.



### VetGuardian®

The innovative VetGuardian® system helps veterinarians watch over and protect their patients' health through stress-free, non-invasive vital signs monitoring.



### TRUVIEW®

With best-in-class digital imaging, fully automated slide preparation and Zomedica pathologists standing by to consult, the TRUVIEW® system helps veterinarians diagnose faster and start treatment sooner.



Visit  
**Zomedica.com**  
to learn more.





ASSISI

LOOP<sup>®</sup>

A family of tPEMF<sup>™</sup> products for pain, inflammation and canine separation anxiety.



## FOR MORE INFORMATION:

**Call:** 866-830-7342

**Visit:** [AssisiAnimalHealth.com](http://AssisiAnimalHealth.com)

**Email:** [info@assisianimalhealth.com](mailto:info@assisianimalhealth.com)



©2023 Zomedica, Inc. All Rights Reserved.  
Assisi, Assisi Loop and NPAID are registered trademarks of Zomedica, Inc.

[Zomedica.com](http://Zomedica.com)